



9 Frank Wright Close, Norfolk Park, Sheffield, S2 3RE

Saxton Mee

9 Frank Wright Close

Norfolk Park

Guide Price

£290,000

Guide Price £290,000-£310,000

This spacious 4-bedroom semi-detached house, set over three floors, is located in the sought-after area of Norfolk Park. The property benefits from gated off-street parking and a good-sized garden, perfect for outdoor living.

The ground floor features a hallway that leads to a comfortable lounge, which flows through to an open-plan kitchen diner. French doors from the dining area open onto the garden, creating a seamless connection between indoor and outdoor spaces. The ground floor also includes a convenient downstairs WC and a storage cupboard, adding to the practicality of the home.

On the first floor, you'll find two well-sized bedrooms and a family bathroom. The second floor is home to two additional bedrooms, including a master bedroom with its own private balcony, offering lovely views. A modern shower room completes the second floor.

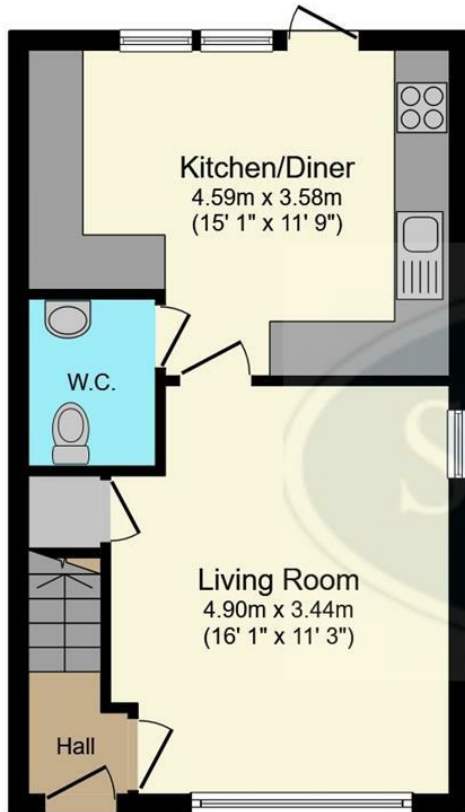
This property is bright, airy, and offers a versatile layout, providing ample space for family living. Norfolk Park is a highly desirable location, with easy access to local amenities, parks, and excellent transport links, making this an ideal place to call home.



- Four Bedroom Semi Detached Property
- Versatile Accommodation Over Three Floors
- Open Plan Kitchen Diner
- French Doors Leading Onto Garden From Dining Room
- Master Bedroom Balcony With Magnificent Views
- Modern Shower Room Plus Family Bathroom
- Gated Off Street Parking
- Sought After Location Close To Good Amenities
- Leasehold 249 years from and including 13 September 2012
- Viewing Via Banner Cross Office

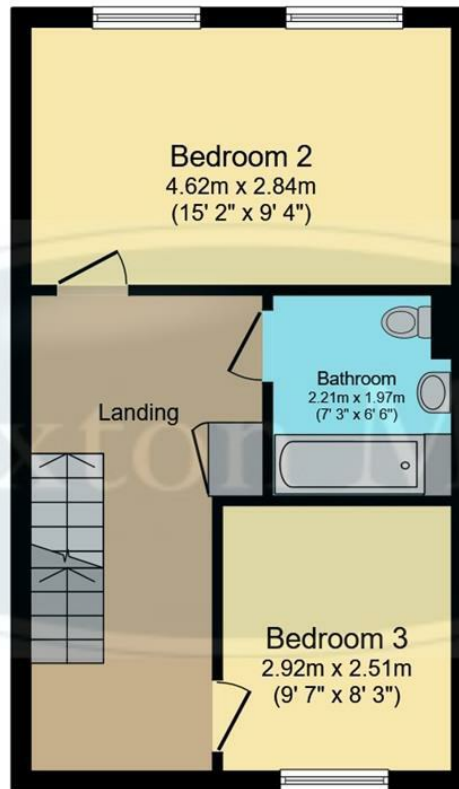






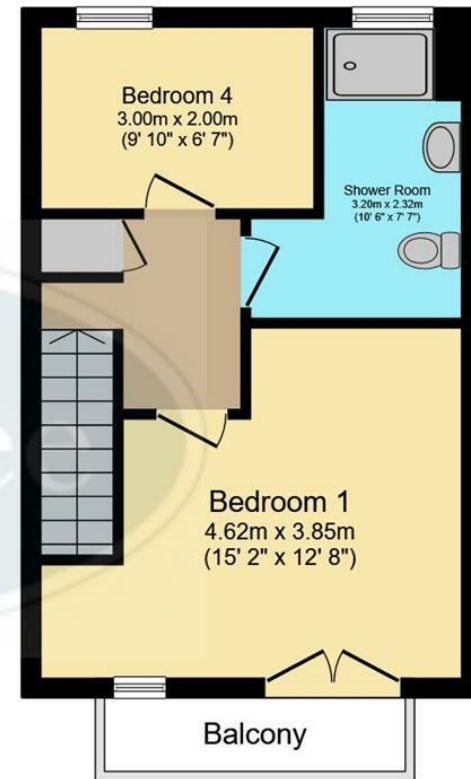
Ground Floor

Floor area 37.7 m² (406 sq.ft.)



First Floor

Floor area 37.7 m² (406 sq.ft.)



Second Floor

Floor area 33.0 m² (356 sq.ft.)

TOTAL: 108.5 m² (1,168 sq.ft.)

This floor plan is for illustrative purposes only. It is not drawn to scale. Any measurements, floor areas (including any total floor area), openings and orientations are approximate. No details are guaranteed, they cannot be relied upon for any purpose and do not form any part of any agreement. No liability is taken for any error, omission or misstatement. A party must rely upon its own inspection(s). Powered by www.Propertybox.io

While we endeavour to make our sales particulars fair, accurate and reliable, they are only a general guide to the property and, accordingly, if there is any point, which is of particular importance to you, please contact the relevant office. The Agents have not tested any apparatus, equipment, fittings or services and so cannot verify they are in working order. The buyer is advised to obtain verification. Please note all the measurement details are approximate and should not be relied upon as exact. All plans, floor plans and maps are for guidance purposes only and are not to scale. Under no circumstances should they be relied upon as exact or for use in planning carpets and other such fixtures, fittings or furnishings. YOUR HOME IS AT RISK IF YOU DO NOT KEEP UP REPAYMENTS ON A MORTGAGE OR OTHER LOAN SECURED ON IT. 'A Life Assurance policy may be requested.' 'Written Quotations of credit terms available on request.'

Banner Cross
T: 0114 268 3241
E: bannercross@saxtonmee.co.uk
www.saxtonmee.co.uk

Hathersage
T: 01433 650009
E: hathersage@saxtonmee.co.uk

Bakewell
T: 01629 815307
E: bakewell@saxtonmee.co.uk

Matlock
T: 01629 828250
E: matlock@saxtonmee.co.uk

Saxton Mee