



37 Baxter Mews, Fox Hill, Sheffield, S6 1LG

Saxton Mee

37 Baxter Mews

Fox Hill

Guide Price

£145,000

GUIDE PRICE £145k-£150k PENTHOUSE APARTMENT WITH UPGRADED KITCHEN AND MEDIA WALL

This fabulous two bedroom third floor apartment offers stylish contemporary accommodation and is situated in this popular location close to Kilner Way Retail Park and all of the amenities available in nearby Hillsborough. Offered for sale with no onward vendor chain, this delightful property is ideal for first time buyers and briefly comprises;

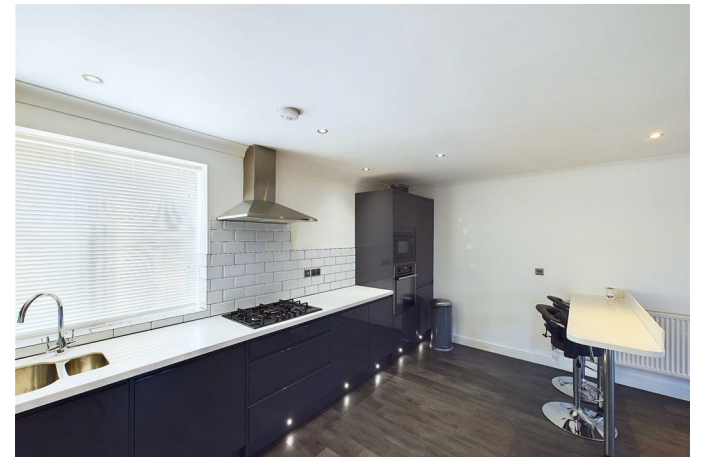
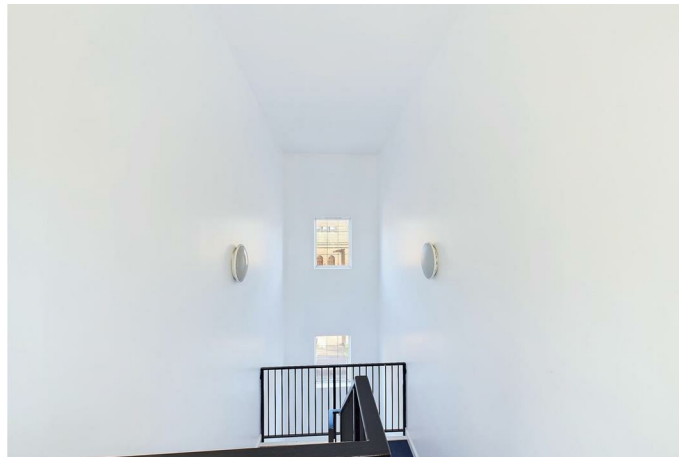
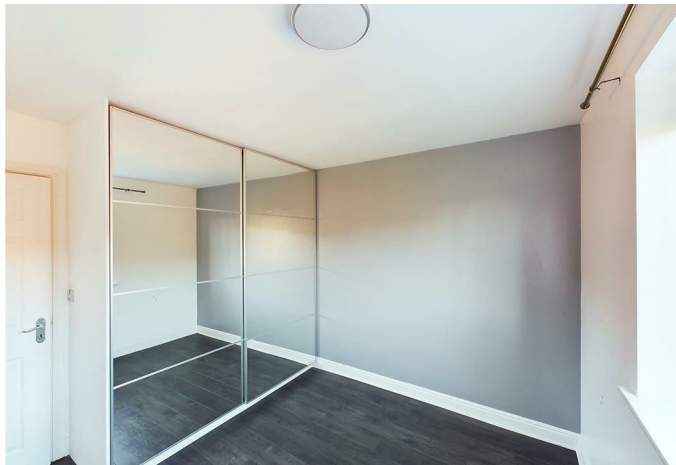
Secure communal entrance hallway, inner hallway, open plan modern upgraded kitchen with integrated appliances, living area incorporating a media wall and French doors opening onto a Juliet balcony. There are two double bedrooms-one with fitted wardrobes , and a bathroom with bath and shower above, wash hand basin with vanity unit and low flush w.c.

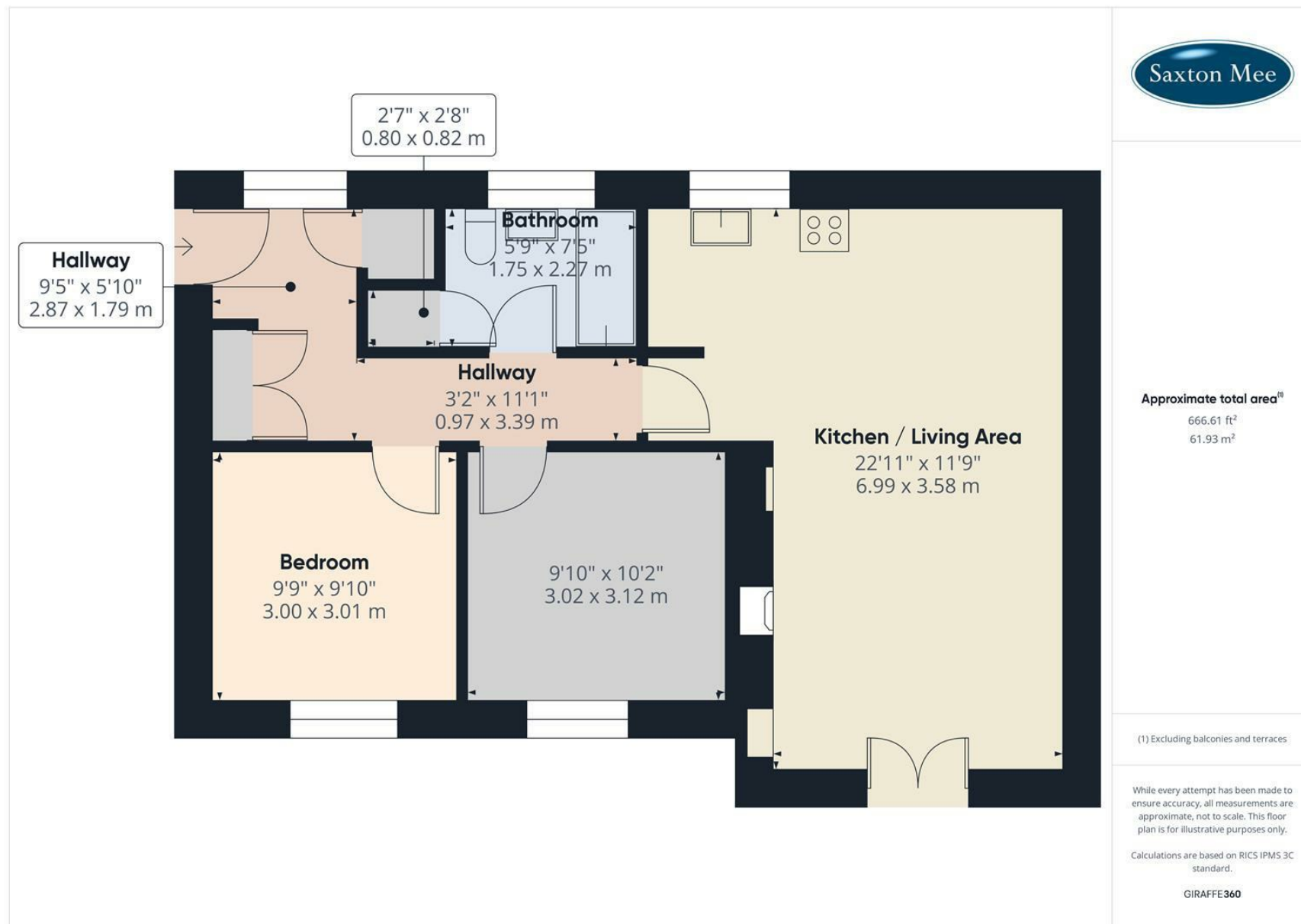
Externally there are communal gardens and there is an allocated car parking space.

An internal inspection is highly recommended in order to appreciate the size and quality of this lovely apartment.



- NO CHAIN
- PENTHOUSE APARTMENT
- ALLOCATED CAR PARKING SPACE
- UPGRADED KITCHEN AND LOUNGE
- MODERN MEDIA WALL IN LOUNGE WITH BALCONY
- AIR CONDITIONING
- FITTED WARDROBES IN ONE OF BEDROOMS AND UPGRADED BATHROOM
- EPC RATING: TBC
- LEASEHOLD: 576 Years remaining
- VIEWINGS VIA BANNER CROSS BRANCH





While we endeavour to make our sales particulars fair, accurate and reliable, they are only a general guide to the property and, accordingly, if there is any point, which is of particular importance to you, please contact the relevant office. The Agents have not tested any apparatus, equipment, fittings or services and so cannot verify they are in working order. The buyer is advised to obtain verification. Please note all the measurement details are approximate and should not be relied upon as exact. All plans, floor plans and maps are for guidance purposes only and are not to scale. Under no circumstances should they be relied upon as exact or for use in planning carpets and other such fixtures, fittings or furnishings. YOUR HOME IS AT RISK IF YOU DO NOT KEEP UP REPAYMENTS ON A MORTGAGE OR OTHER LOAN SECURED ON IT. 'A Life Assurance policy may be requested.' 'Written Quotations of credit terms available on request.'

Banner Cross
T: 0114 268 3241
E: bannercross@saxtonmee.co.uk
www.saxtonmee.co.uk

Hathersage
T: 01433 650009
E: hathersage@saxtonmee.co.uk

Bakewell
T: 01629 815307
E: bakewell@saxtonmee.co.uk

Matlock
T: 01629 828250
E: matlock@saxtonmee.co.uk

