



25 Seagrave Crescent, Gleadless, Sheffield, S12 2JL

Saxton Mee

25 Seagrave Crescent

Gleadless

Guide Price

£200,000

Guide Price £200,000 to £220,000

This stunning 3-bedroom semi-detached property is located in the highly sought-after area of Gleadless, offering a fantastic location with easy access to local amenities, transport links, and the motorway networks. The house has been meticulously maintained and presents an ideal home for families or professionals.

Upon entering, you are greeted by an entrance lobby with stairs rising to the first floor landing. The spacious lounge, positioned at the front of the house, providing a bright and comfortable living space. The lounge flows seamlessly into a larger than average dining room, perfect for family meals and entertaining. There is also a downstairs storage which is accessed from the dining room.

To the rear of the property is the kitchen with access out onto the garden. The fitted kitchen overlooks the delightful rear garden, and offers ample storage and worktop space.

Upstairs, the property boasts three well-proportioned bedrooms, along with a family bathroom.

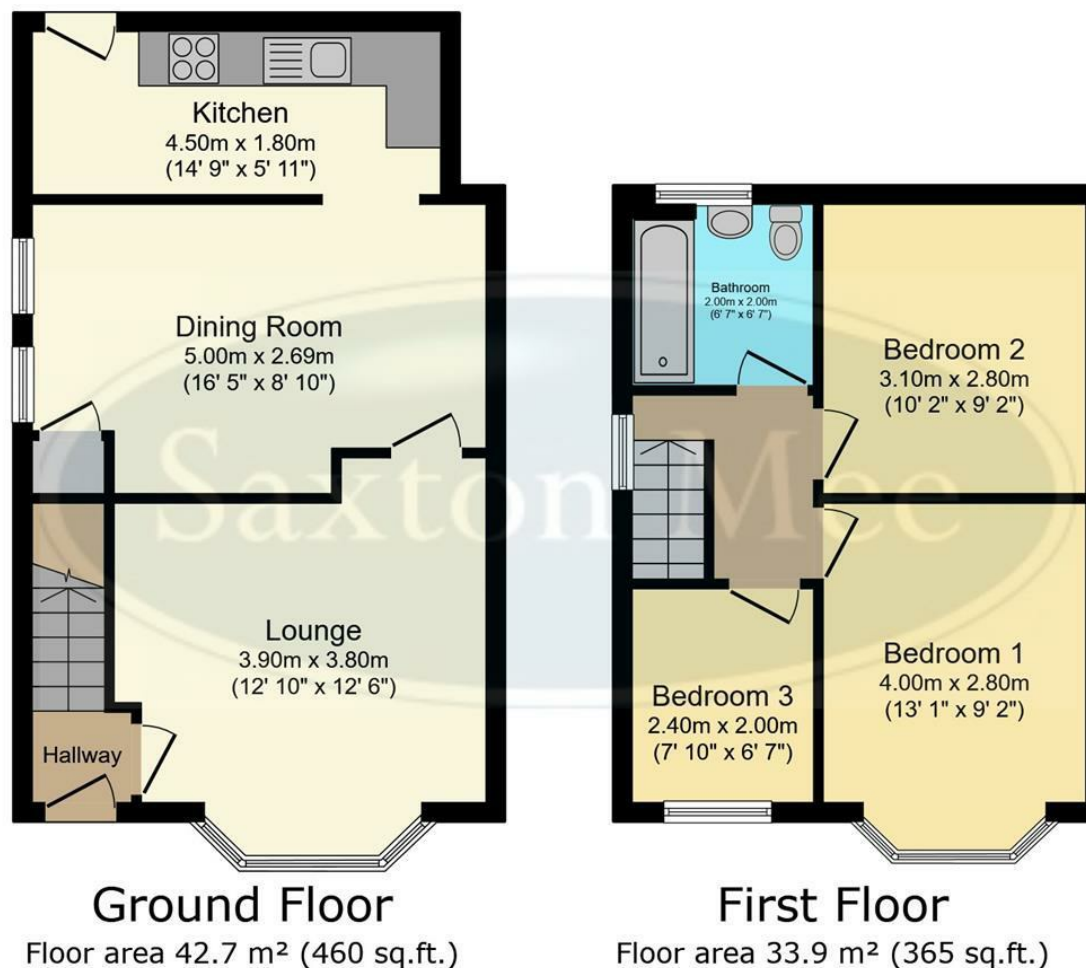
With its immaculate presentation, extended living space, and fantastic location, this house is an ideal choice for those looking to buy a property which is "move in ready". Early viewing is highly recommended to fully appreciate all that this property has to offer.



- Excellent Location close to Amenities, Transport Links and Motorway Networks
- Immaculately Presented Throughout
- Delightful Rear Garden
- Three Bedrooms
- Family Bathroom
- Extended Kitchen at the Rear
- Perfect for a First Time Buyer or Family
- Parking on The Driveway







TOTAL: 76.6 m² (824 sq.ft.)

This floor plan is for illustrative purposes only. It is not drawn to scale. Any measurements, floor areas (including any total floor area), openings and orientations are approximate. No details are guaranteed, they cannot be relied upon for any purpose and do not form any part of any agreement. No liability is taken for any error, omission or misstatement. A party must rely upon its own inspection(s). Powered by www.Propertybox.io

While we endeavour to make our sales particulars fair, accurate and reliable, they are only a general guide to the property and, accordingly, if there is any point, which is of particular importance to you, please contact the relevant office. The Agents have not tested any apparatus, equipment, fittings or services and so cannot verify they are in working order. The buyer is advised to obtain verification. Please note all the measurement details are approximate and should not be relied upon as exact. All plans, floor plans and maps are for guidance purposes only and are not to scale. Under no circumstances should they be relied upon as exact or for use in planning carpets and other such fixtures, fittings or furnishings. YOUR HOME IS AT RISK IF YOU DO NOT KEEP UP REPAYMENTS ON A MORTGAGE OR OTHER LOAN SECURED ON IT. 'A Life Assurance policy may be requested.' 'Written Quotations of credit terms available on request.'

Banner Cross
T: 0114 268 3241
E: bannercross@saxtonmee.co.uk
www.saxtonmee.co.uk

Hathersage
T: 01433 650009
E: hathersage@saxtonmee.co.uk

Bakewell
T: 01629 815307
E: bakewell@saxtonmee.co.uk

Matlock
T: 01629 828250
E: matlock@saxtonmee.co.uk

