



17 Ranulf Court Abbeydale Road South, Millhouses, Sheffield, S7 2PZ

Saxton Mee

17 Ranulf Court Abbeydale

Millhouses

Guide Price

£125,000

GUIDE PRICE: £125,000-£135,000

This stunning, recently renovated 1-bedroom ground floor apartment is a true gem, offering modern living in one of Sheffield's most sought-after areas. Located directly opposite the picturesque Millhouses Park, you'll enjoy a tranquil and leafy setting while being just moments from all the amenities and conveniences you need.

With easy access to bus routes on Abbeydale Road, commuting into the city centre or venturing into the stunning Peak District couldn't be simpler. For everyday essentials, the famous CRUMB Bakery, supermarkets, a post office, and more are just a short walk away. And when you're in the mood for nature, Ecclesall Woods and Millhouses Park provide beautiful green spaces right on your doorstep.

Ranulf Court is an over 60's independent living development, Ranulf Court provides excellent peace of mind with a manager on-site five days a week and a distress alarm pull system, ensuring security and support whenever needed.

Inside, this apartment is the perfect blend of stylish design and practicality. The spacious lounge features bevelled glass doors that open into the dining area and sleek new kitchen, providing a bright and airy flow throughout. From the dining area, a patio door leads out to the well-maintained communal gardens, offering a peaceful spot to relax outdoors. The bedroom is generously sized with built-in storage, and the brand new shower room is finished to a high standard, with contemporary fixtures and fittings.

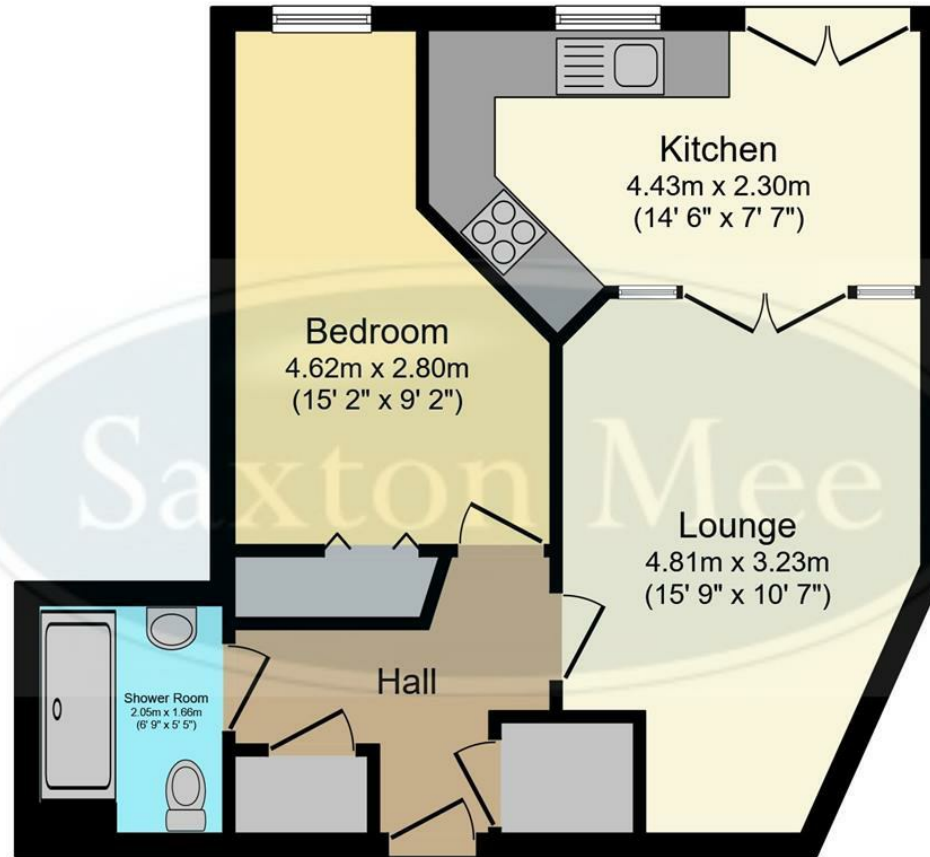
With a completely refurbished interior, this apartment is perfect for those seeking luxury, convenience, and a charming community in the heart of Millhouses. Don't miss the chance to make this fabulous property your new home!



- One Bedroom Ground Floor Apartment
- Located in the Heart of Millhouses close to an Array of Amenities
- Recently Renovated Throughout
- Over 60's Development
- Newly fitted Shower Room and Modern Kitchen
- Bus Routes on the Doorstep
- Manager on site 5 days a week and a pulley alarm system 24 hours a day
- Stunningly Decorated and Renovated to a very high standard
- Built in Storage
- Independent living facility







Floor Plan

Floor area 46.8 m² (503 sq.ft.)

TOTAL: 46.8 m² (503 sq.ft.)

This floor plan is for illustrative purposes only. It is not drawn to scale. Any measurements, floor areas (including any total floor area), openings and orientations are approximate. No details are guaranteed, they cannot be relied upon for any purpose and do not form any part of any agreement. No liability is taken for any error, omission or misstatement. A party must rely upon its own inspection(s). Powered by www.Propertybox.io

While we endeavour to make our sales particulars fair, accurate and reliable, they are only a general guide to the property and, accordingly, if there is any point, which is of particular importance to you, please contact the relevant office. The Agents have not tested any apparatus, equipment, fittings or services and so cannot verify they are in working order. The buyer is advised to obtain verification. Please note all the measurement details are approximate and should not be relied upon as exact. All plans, floor plans and maps are for guidance purposes only and are not to scale. Under no circumstances should they be relied upon as exact or for use in planning carpets and other such fixtures, fittings or furnishings. YOUR HOME IS AT RISK IF YOU DO NOT KEEP UP REPAYMENTS ON A MORTGAGE OR OTHER LOAN SECURED ON IT. 'A Life Assurance policy may be requested.' 'Written Quotations of credit terms available on request.'

Banner Cross
T: 0114 268 3241
E: bannercross@saxtonmee.co.uk
www.saxtonmee.co.uk

Hathersage
T: 01433 650009
E: hathersage@saxtonmee.co.uk

Bakewell
T: 01629 815307
E: bakewell@saxtonmee.co.uk

Matlock
T: 01629 828250
E: matlock@saxtonmee.co.uk

