



316 School Road, Crookes, Sheffield, S10 1GR

Saxton Mee

316 School Road

Crookes

Offers Around

£320,000

A superb large four bedroom villa terrace with great accommodation over four floors, ideal for the large family or as an investment property. The property is for sale with NO CHAIN and immediate vacant possession.

Situated near the top of School Road, close to the excellent amenities of Crookes with first class shopping, regular public transport and easy access of the universities and nearby hospitals.

The property comprises: Ground Floor: reception hall, sitting room, dining room opening through to well fitted offshot kitchen. Lower Ground Floor: double bedroom with en suite WC and wash hand basin. First Floor: double bedroom, bathroom with full suite and shower room with full suite. Second Floor: two double bedrooms.

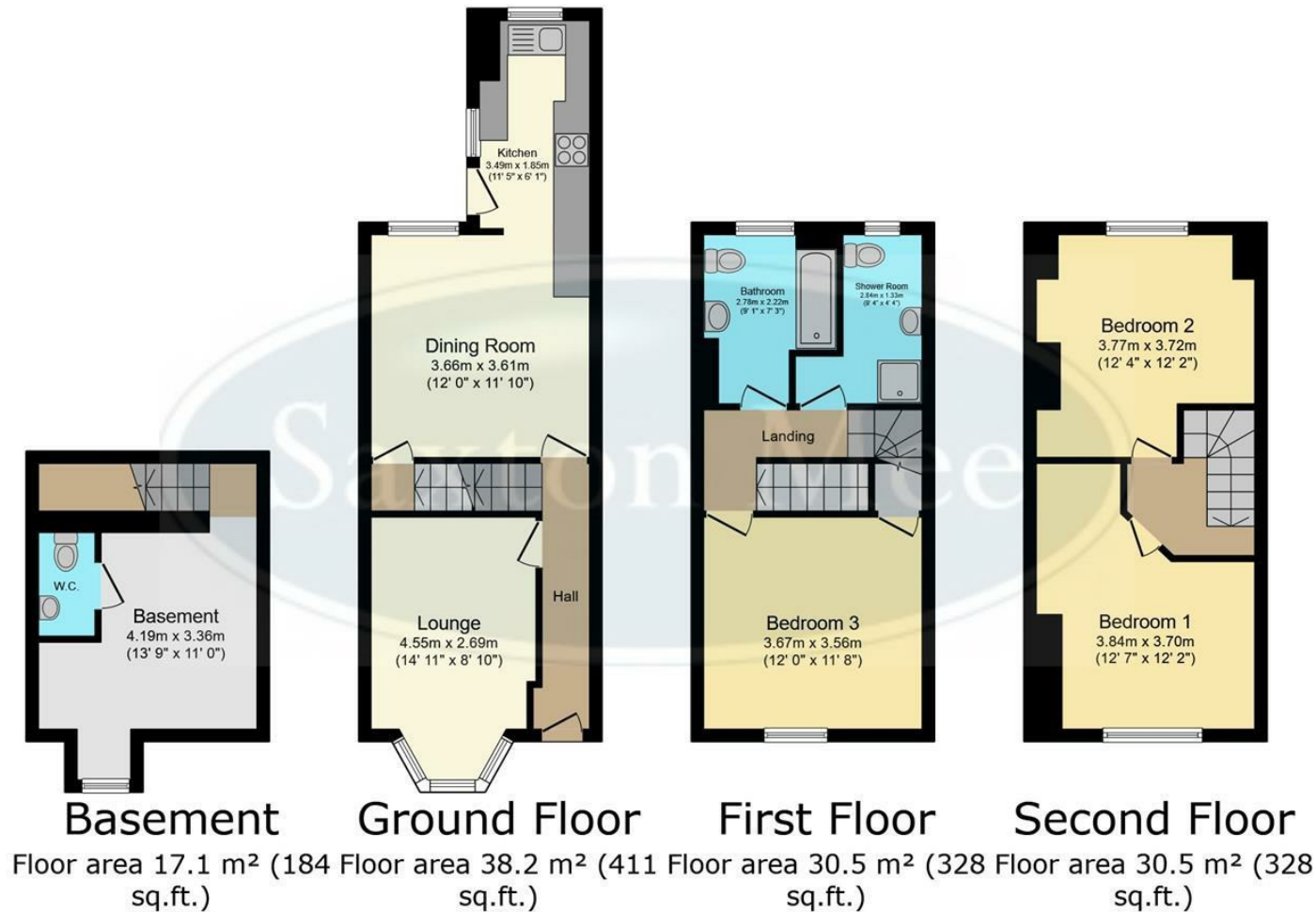
Outside there is a forecourt to the front. To the rear there is a patio area and artificial grassed area which is ideal for barbeques and entertaining with a good aspect.



- Towards The Top Of School Road Close To Excellent Amenities Of Crookes
- Well Placed For Universities And Hospitals
- Four Double Bedroom Villa Terrace
- Bathroom With Full Suite And Shower Room With Full Suite
- Accommodation Over Four Floors
- For Sale With Immediate Vacant Possession And No Chain
- Leasehold 800 Years From 25 December 1896
- Internal Inspection Strongly Recommended
- EPC Rating D
- Viewing Via Banner Cross Office







TOTAL: 116.3 m² (1,252 sq.ft.)

This floor plan is for illustrative purposes only. It is not drawn to scale. Any measurements, floor areas (including any total floor area), openings and orientations are approximate. No details are guaranteed, they cannot be relied upon for any purpose and do not form any part of any agreement. No liability is taken for any error, omission or misstatement. A party must rely upon its own inspection(s). Powered by www.Propertybox.io

While we endeavour to make our sales particulars fair, accurate and reliable, they are only a general guide to the property and, accordingly, if there is any point, which is of particular importance to you, please contact the relevant office. The Agents have not tested any apparatus, equipment, fittings or services and so cannot verify they are in working order. The buyer is advised to obtain verification. Please note all the measurement details are approximate and should not be relied upon as exact. All plans, floor plans and maps are for guidance purposes only and are not to scale. Under no circumstances should they be relied upon as exact or for use in planning carpets and other such fixtures, fittings or furnishings. YOUR HOME IS AT RISK IF YOU DO NOT KEEP UP REPAYMENTS ON A MORTGAGE OR OTHER LOAN SECURED ON IT. 'A Life Assurance policy may be requested.' 'Written Quotations of credit terms available on request.'

Banner Cross
 T: 0114 268 3241
 E: bannercross@saxtonmee.co.uk
www.saxtonmee.co.uk

Hathersage
 T: 01433 650009
 E: hathersage@saxtonmee.co.uk

Bakewell
 T: 01629 815307
 E: bakewell@saxtonmee.co.uk

Matlock
 T: 01629 828250
 E: matlock@saxtonmee.co.uk

