



Apt 7 Bluecoat House 2 Bluecoat Rise, Brincliffe, Sheffield, S11 9DX



# Apt 7 Bluecoat House 2

## Brincliffe

Guide Price

# £315,000

GUIDE PRICE - £315,000 - £325,000

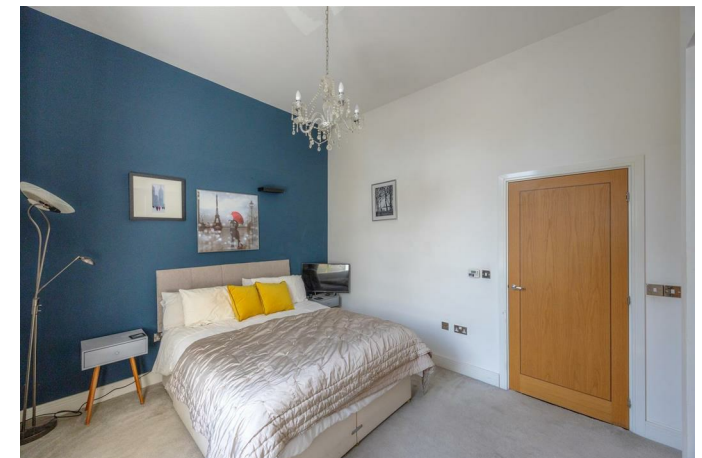
Located on the first floor of this charming period property is this two bedroom two bathroom apartment offering beautiful light and airy accommodation with fabulous high ceilings, huge windows and spacious rooms throughout. This delightful property is being sold with no onward vendor chain and briefly comprises;

Communal entrance hallway with secure intercom system. Inner hallway. Modern bathroom with bath, wash hand basin and W.C. Master bedroom with fitted wardrobes and en suite shower room. Double bedroom two. Large open plan kitchen/living/dining area having a stylish range of fitted units, with integrated appliances, central island unit and a bright and spacious lounge area with lovely views.

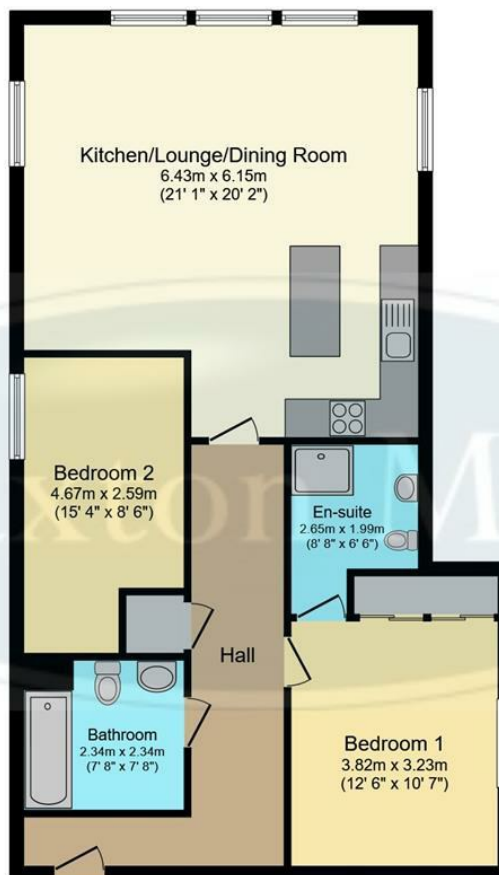
Externally, there are beautifully maintained communal grounds and one allocated parking space, with further visitor parking available.

Tenure: Leasehold

- NO CHAIN
- TWO DOUBLE BEDROOMS
- TWO BATHROOMS
- FIRST FLOOR
- HIGH CEILINGS, LARGE WINDOWS AND SPACIOUS ROOMS
- BEAUTIFULLY PRESENTED
- FABULOUS HIGHLY REGARDED AND CONVENIENT LOCATION
- EPC RATING:
- COUNCIL TAX BAND
- VIEWINGS VIA BANNER CROSS BRANCH







## Floor Plan

Floor area 86.2 m<sup>2</sup> (928 sq.ft.)

**TOTAL: 86.2 m<sup>2</sup> (928 sq.ft.)**

This floor plan is for illustrative purposes only. It is not drawn to scale. Any measurements, floor areas (including any total floor area), openings and orientations are approximate. No details are guaranteed, they cannot be relied upon for any purpose and do not form any part of any agreement. No liability is taken for any error, omission or misstatement. A party must rely upon its own inspection(s). Powered by [www.Propertybox.io](http://www.Propertybox.io)

While we endeavour to make our sales particulars fair, accurate and reliable, they are only a general guide to the property and, accordingly, if there is any point, which is of particular importance to you, please contact the relevant office. The Agents have not tested any apparatus, equipment, fittings or services and so cannot verify they are in working order. The buyer is advised to obtain verification. Please note all the measurement details are approximate and should not be relied upon as exact. All plans, floor plans and maps are for guidance purposes only and are not to scale. Under no circumstances should they be relied upon as exact or for use in planning carpets and other such fixtures, fittings or furnishings. YOUR HOME IS AT RISK IF YOU DO NOT KEEP UP REPAYMENTS ON A MORTGAGE OR OTHER LOAN SECURED ON IT. 'A Life Assurance policy may be requested.' 'Written Quotations of credit terms available on request.'

Banner Cross  
T: 0114 268 3241  
E: [bannercross@saxtonmee.co.uk](mailto:bannercross@saxtonmee.co.uk)  
[www.saxtonmee.co.uk](http://www.saxtonmee.co.uk)

Hathersage  
T: 01433 650009  
E: [hathersage@saxtonmee.co.uk](mailto:hathersage@saxtonmee.co.uk)

Bakewell  
T: 01629 815307  
E: [bakewell@saxtonmee.co.uk](mailto:bakewell@saxtonmee.co.uk)

Matlock  
T: 01629 828250  
E: [matlock@saxtonmee.co.uk](mailto:matlock@saxtonmee.co.uk)

Saxton Mee