



Apartment 30 Northfield Court, Crookes, Sheffield, S10 1QR

Saxton Mee

# Apartment 30 Northfield

## Crookes

Asking Price

**£270,000**

A beautifully presented two bedroom first floor apartment located in this highly desirable development in Crookes and within easy access of all local amenities.

This light and airy property would suit professionals or first time buyers and has wonderful views to the rear over the Rivelin Valley.

The property briefly comprises;

Secure communal entrance hallway, inner hallway with storage, superb through lounge/dining room and open plan into the fitted kitchen. Patio doors open from the lounge area onto a balcony with far reaching views. There is a master bedroom with modern fitted wardrobes, an en suite shower room and a further double bedroom. The family bathroom has a bath, wash hand basin and w.c.

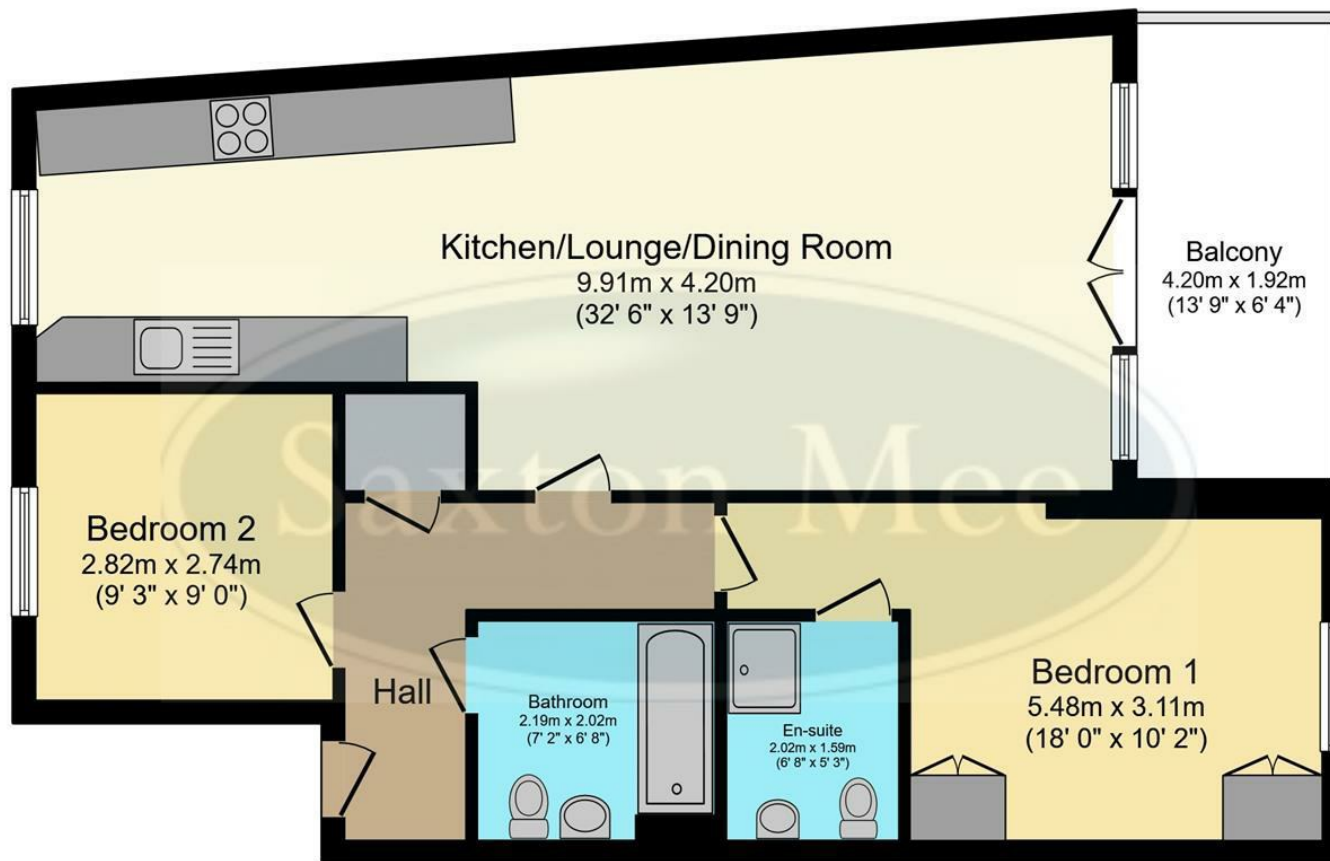
Externally the property benefits from an allocated car parking space which is located right next to the building and there are well maintained communal gardens.

An internal inspection is highly recommended.

- First Floor Apartment With Secure Entry System
- Superb Open Plan Living
- Two Double Bedrooms
- Master Bedroom With Fitted Wardrobes And En-Suite
- Family Bathroom
- Allocated Car Parking Space
- Far Reaching Views Over Rivelin Valley
- EPC Rating TBC
- Council Tax Band C
- Viewings Via Banner Cross Branch







## First Floor

Floor area 72.3 m<sup>2</sup> (778 sq.ft.)

**TOTAL: 72.3 m<sup>2</sup> (778 sq.ft.)**

This floor plan is for illustrative purposes only. It is not drawn to scale. Any measurements, floor areas (including any total floor area), openings and orientations are approximate. No details are guaranteed, they cannot be relied upon for any purpose and do not form any part of any agreement. No liability is taken for any error, omission or misstatement. A party must rely upon its own inspection(s). Powered by [www.Propertybox.io](http://www.Propertybox.io)

While we endeavour to make our sales particulars fair, accurate and reliable, they are only a general guide to the property and, accordingly, if there is any point, which is of particular importance to you, please contact the relevant office. The Agents have not tested any apparatus, equipment, fittings or services and so cannot verify they are in working order. The buyer is advised to obtain verification. Please note all the measurement details are approximate and should not be relied upon as exact. All plans, floor plans and maps are for guidance purposes only and are not to scale. Under no circumstances should they be relied upon as exact or for use in planning carpets and other such fixtures, fittings or furnishings. YOUR HOME IS AT RISK IF YOU DO NOT KEEP UP REPAYMENTS ON A MORTGAGE OR OTHER LOAN SECURED ON IT. 'A Life Assurance policy may be requested.' 'Written Quotations of credit terms available on request.'

Banner Cross  
T: 0114 268 3241  
E: [bannercross@saxtonmee.co.uk](mailto:bannercross@saxtonmee.co.uk)  
[www.saxtonmee.co.uk](http://www.saxtonmee.co.uk)

Hathersage  
T: 01433 650009  
E: [hathersage@saxtonmee.co.uk](mailto:hathersage@saxtonmee.co.uk)

Bakewell  
T: 01629 815307  
E: [bakewell@saxtonmee.co.uk](mailto:bakewell@saxtonmee.co.uk)

Matlock  
T: 01629 828250  
E: [matlock@saxtonmee.co.uk](mailto:matlock@saxtonmee.co.uk)

