



35 Barkers Road, Nether Edge, Sheffield, S7 1SD



35 Barkers Road

Nether Edge

Guide Price

£500,000

GUIDE PRICE £500,000-£525,000

A stunning, immaculate, beautifully appointed and substantially improved and extended four double bedroom Victorian Villa Terrace situated in an elevated position on this popular road in a very sought after location. The beautifully decorated accommodation retains some lovely original features and must be viewed internally to do full justice.

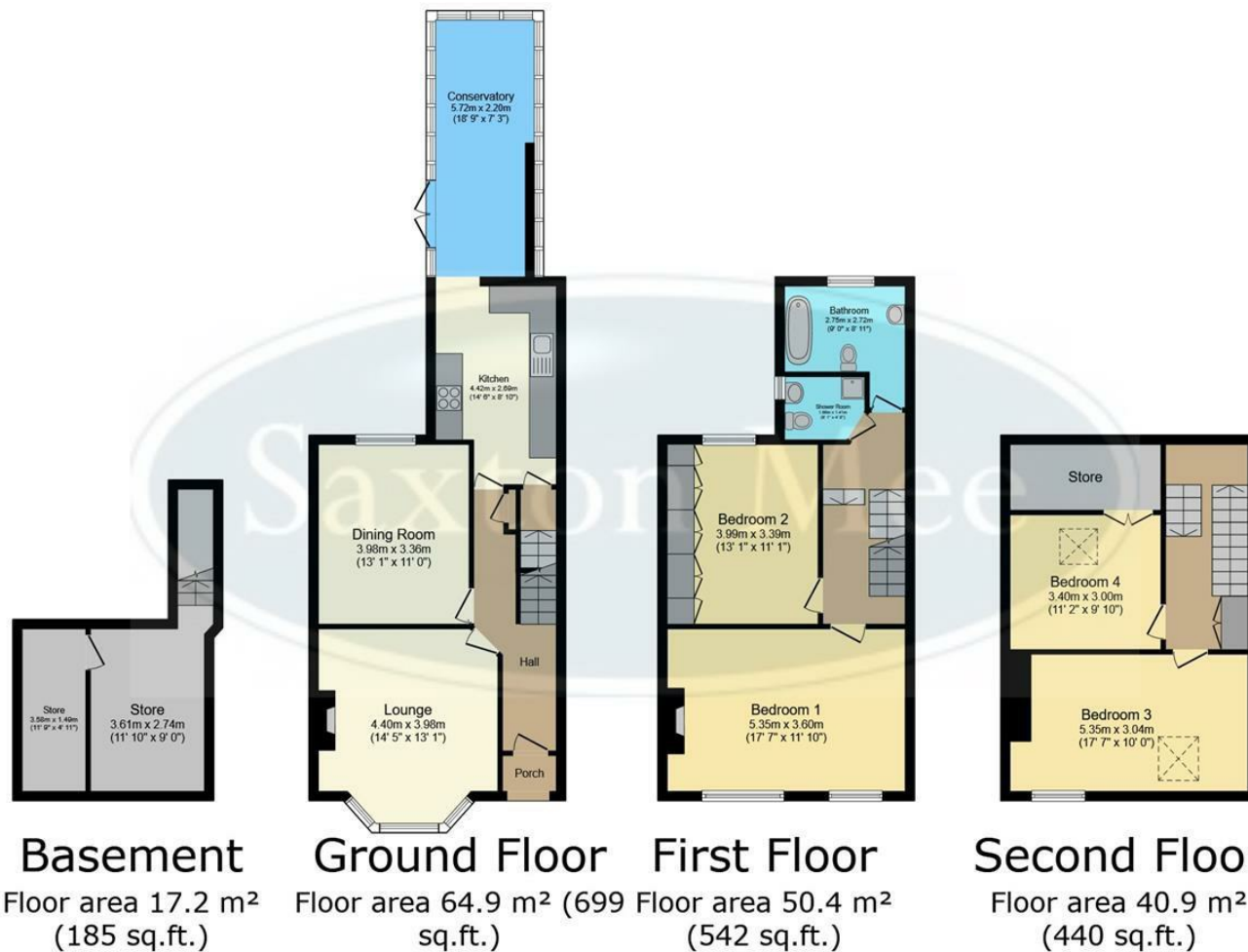
The property comprises; entrance vestibule, long reception hall with original staircase. Bay window sitting room with feature fireplace. Separate dining room with bespoke built-in shelving. Large extended living kitchen with modern contemporary range of units and extensive range of built-in appliances. Opening through to a sitting area and fantastic garden room/dining area, with south easterly aspect. In the basement there is a utility area and plentiful storage. First floor; a very large master bedroom with built-in wardrobes, double bedroom two with built-in wardrobes. Luxury bathroom and separate luxury shower room. Second floor; two further double bedrooms. Outside; elevated to front with attractive garden. To the rear a south east facing courtyard garden ideal for entertaining and barbecues.

Very sought after suburb with a great community hub within a short walk of Endcliffe Park and the first class amenities of Sharrowvale Road and Hunters Bar.

- Large Four Double Bedroom Villa Terrace
- Substantially Extended, Tastefully Appointed and Decorated
- Stunning Sympathetically Upgraded Accommodation
- Very Large Extended Living Kitchen
- Two Luxury Bathrooms
- Large Master Bedroom
- South Easterly Facing Courtyard Garden
- Popular Suburb of Nether Edge
- EPC Rating D/Council Tax Band C
- Viewing Via Banner Cross Office







TOTAL: 173.4 m² (1,867 sq.ft.)

This floor plan is for illustrative purposes only. It is not drawn to scale. Any measurements, floor areas (including any total floor area), openings and orientations are approximate. No details are guaranteed, they cannot be relied upon for any purpose and do not form any part of any agreement. No liability is taken for any error, omission or misstatement. A party must rely upon its own inspection(s). Powered by www.Propertybox.io

While we endeavour to make our sales particulars fair, accurate and reliable, they are only a general guide to the property and, accordingly, if there is any point, which is of particular importance to you, please contact the relevant office. The Agents have not tested any apparatus, equipment, fittings or services and so cannot verify they are in working order. The buyer is advised to obtain verification. Please note all the measurement details are approximate and should not be relied upon as exact. All plans, floor plans and maps are for guidance purposes only and are not to scale. Under no circumstances should they be relied upon as exact or for use in planning carpets and other such fixtures, fittings or furnishings. YOUR HOME IS AT RISK IF YOU DO NOT KEEP UP REPAYMENTS ON A MORTGAGE OR OTHER LOAN SECURED ON IT. 'A Life Assurance policy may be requested.' 'Written Quotations of credit terms available on request.'

Banner Cross
T: 0114 268 3241
E: bannercross@saxtonmee.co.uk
www.saxtonmee.co.uk

Hathersage
T: 01433 650009
E: hathersage@saxtonmee.co.uk

Bakewell
T: 01629 815307
E: bakewell@saxtonmee.co.uk

Matlock
T: 01629 828250
E: matlock@saxtonmee.co.uk

