



29 Fulwood Park Mansions Chesterwood Drive, Broomhill, Sheffield, S10

Saxton Mee



# 29 Fulwood Park

## Broomhill

Offers Over

**£170,000**

NO CHAIN \*\* GARAGE AND RESIDENTS PARKING \*\* A very well presented, modern and spacious second floor one bedroom apartment located in this sought after development in the heart of Broomhill and within walking distance of the Universities and Hospitals.

The accommodation briefly comprises: Entrance hallway with intercom entry system and cloakroom storage cupboard. A modern fitted kitchen having recently been upgraded to a good standard with a range of units, integrated oven and hob with space for a washing machine and fridge/freezer. Large double bedroom with fitted wardrobes. Modern bathroom with bath and shower over, wash hand basin and W.C. Large lounge/diner with far reaching views.

Outside this property benefits from its own garage, there are communal gardens for residents to enjoy, and ample on street/on site residents parking.

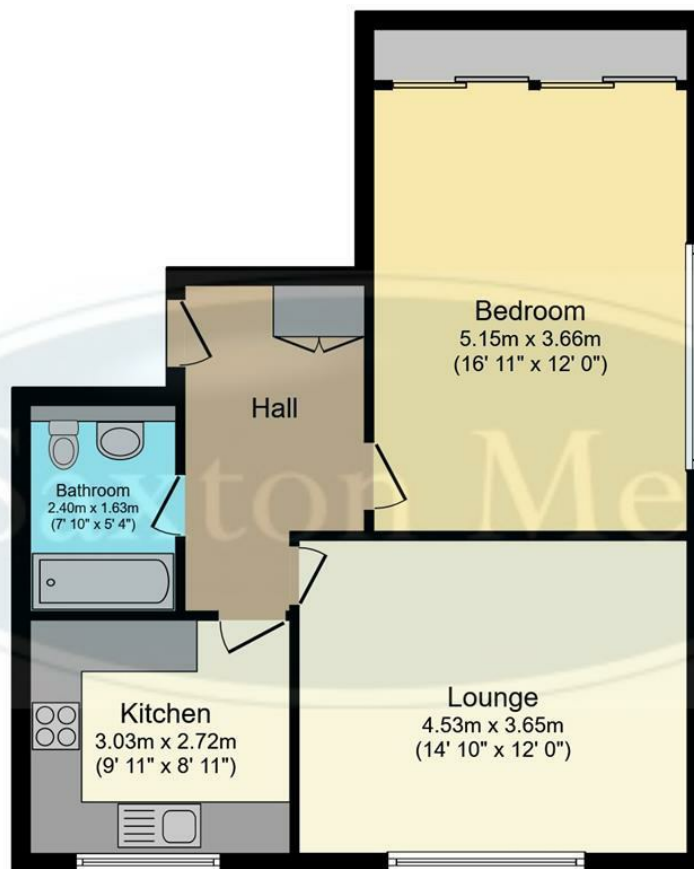
An early viewing is advised to secure this fantastic opportunity whether you are a first time buyer, investor landlord or looking to downsize. Contact Saxton Mee today to book your viewing.



- Second Floor Apartment With Far Reaching Views
- Ideal For A First Time Buyer
- Excellent Location Close To Universities And Hospital and wide range of amenities
- No onward chain
- Close To Bars And Restaurants
- High Quality Finish Throughout
- EPC Rating: TBC
- Council Tax: Band B
- Tenure: Leasehold
- Viewing Via Banner Cross Office







## Floor Plan

Floor area 59.1 sq.m. (636 sq.ft.)

**TOTAL: 59.1 sq.m. (636 sq.ft.)**

This floor plan is for illustrative purposes only. It is not drawn to scale. Any measurements, floor areas (including any total floor area), openings and orientations are approximate. No details are guaranteed, they cannot be relied upon for any purpose and do not form any part of any agreement. No liability is taken for any error, omission or misstatement. A party must rely upon its own inspection(s). Powered by [www.Propertybox.io](http://www.Propertybox.io)

While we endeavour to make our sales particulars fair, accurate and reliable, they are only a general guide to the property and, accordingly, if there is any point, which is of particular importance to you, please contact the relevant office. The Agents have not tested any apparatus, equipment, fittings or services and so cannot verify they are in working order. The buyer is advised to obtain verification. Please note all the measurement details are approximate and should not be relied upon as exact. All plans, floor plans and maps are for guidance purposes only and are not to scale. Under no circumstances should they be relied upon as exact or for use in planning carpets and other such fixtures, fittings or furnishings. YOUR HOME IS AT RISK IF YOU DO NOT KEEP UP REPAYMENTS ON A MORTGAGE OR OTHER LOAN SECURED ON IT. 'A Life Assurance policy may be requested.' 'Written Quotations of credit terms available on request.'

Banner Cross  
T: 0114 268 3241  
E: [bannercross@saxtonmee.co.uk](mailto:bannercross@saxtonmee.co.uk)  
[www.saxtonmee.co.uk](http://www.saxtonmee.co.uk)

Hathersage  
T: 01433 650009  
E: [hathersage@saxtonmee.co.uk](mailto:hathersage@saxtonmee.co.uk)

Bakewell  
T: 01629 815307  
E: [bakewell@saxtonmee.co.uk](mailto:bakewell@saxtonmee.co.uk)

Matlock  
T: 01629 828250  
E: [matlock@saxtonmee.co.uk](mailto:matlock@saxtonmee.co.uk)

