



7 Renshaw Road, Ecclesall, Sheffield, S11 7PD



# 7 Renshaw Road

## Ecclesall

Offers Around

# £475,000

Perfect for a family, with excellent schools and amenities nearby is this four double bedroom effectively extended semi-detached home.

The property is maintained to a high standard throughout with UPVC and gas fired central heating.

Briefly, the accommodation comprises: A welcoming entrance hallway with downstairs cloakroom/W.C. Large through lounge with bay window to the front, central fireplace with log/multi fuel stove and leading to the sun room at the rear. Large breakfasting kitchen having a range of units, integrated oven and hob and dishwasher, with space for a washing machine and fridge/freezer. To the first floor are three generous double bedrooms, the master having fitted wardrobes and a wash hand basin. Family bathroom with bath and shower over and wash basin. Separate W.C. A staircase rises to the attic double bedroom four with far reaching views.

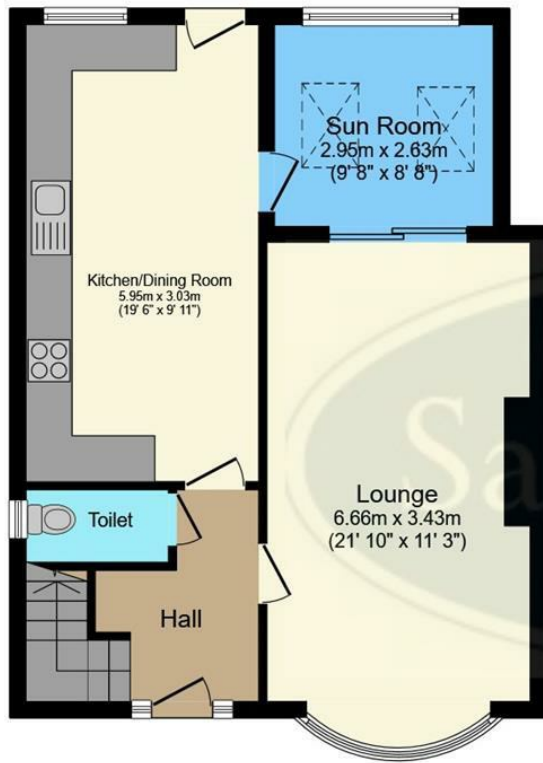
Outside, to the front is a walled garden and off street parking with side access to the gardens. Steps lead down to a large lawn and patio with planted borders and space for a garden shed. A large greenhouse is also an addition for those keen gardeners to grow your own!



- Extended Semi Detached In Sought After Location
- Maintained To A High Standard
- Lounge With Bay Window And Multi Fuel Stove
- Sun Room Accessed From Both Kitchen Diner and Lounge With Aspect Over Garden
- Four Double Bedrooms
- Generous Garden With Greenhouse
- Close To Excellent Schools And Nearby Amenities
- Freehold
- EPC Rating C/Council Tax Band C
- Viewings Via Banner Cross Office







**Ground Floor**  
Floor area 57.5 m<sup>2</sup> (619 sq.ft.)



**First Floor**  
Floor area 48.9 m<sup>2</sup> (526 sq.ft.)



**Second Floor**  
Floor area 10.7 m<sup>2</sup> (115 sq.ft.)

**TOTAL: 117.1 m<sup>2</sup> (1,261 sq.ft.)**

This floor plan is for illustrative purposes only. It is not drawn to scale. Any measurements, floor areas (including any total floor area), openings and orientations are approximate. No details are guaranteed, they cannot be relied upon for any purpose and do not form any part of any agreement. No liability is taken for any error, omission or misstatement. A party must rely upon its own inspection(s). Powered by [www.Propertybox.io](http://www.Propertybox.io)

While we endeavour to make our sales particulars fair, accurate and reliable, they are only a general guide to the property and, accordingly, if there is any point, which is of particular importance to you, please contact the relevant office. The Agents have not tested any apparatus, equipment, fittings or services and so cannot verify they are in working order. The buyer is advised to obtain verification. Please note all the measurement details are approximate and should not be relied upon as exact. All plans, floor plans and maps are for guidance purposes only and are not to scale. Under no circumstances should they be relied upon as exact or for use in planning carpets and other such fixtures, fittings or furnishings. YOUR HOME IS AT RISK IF YOU DO NOT KEEP UP REPAYMENTS ON A MORTGAGE OR OTHER LOAN SECURED ON IT. 'A Life Assurance policy may be requested.' 'Written Quotations of credit terms available on request.'

Banner Cross  
T: 0114 268 3241  
E: [bannercross@saxtonmee.co.uk](mailto:bannercross@saxtonmee.co.uk)  
[www.saxtonmee.co.uk](http://www.saxtonmee.co.uk)

Hathersage  
T: 01433 650009  
E: [hathersage@saxtonmee.co.uk](mailto:hathersage@saxtonmee.co.uk)

Bakewell  
T: 01629 815307  
E: [bakewell@saxtonmee.co.uk](mailto:bakewell@saxtonmee.co.uk)

Matlock  
T: 01629 828250  
E: [matlock@saxtonmee.co.uk](mailto:matlock@saxtonmee.co.uk)

