



27 Grove Road, Totley, Sheffield, S17 4DJ



27 Grove Road

Totley

Offers Around

£320,000

An attractive two double bedroom extended detached bungalow with delightful sunny rear garden area and integral garage, situated on this popular cul de sac in this extremely sought after residential suburb.

Offered for sale with no chain.

The property briefly comprises: entrance porch, reception hall, well fitted kitchen, good sized through lounge/dining room, conservatory with access to rear garden. Two double bedrooms and shower room with full suite. Outside: driveway providing off road parking and integral garage. To the rear, southerly facing block paved area and small border.

Excellent facilities of Totley Rise within a short walk and close to good local shops, transport links and on the edge of the beautiful open countryside.



- Extended Detached Bungalow On The Level
- Two Double Bedrooms
- Large Through Lounge/Dining Room
- Easily Maintainable Southerly Facing Rear Garden
- Integral Garage
- Very Popular Residential Area
- Quiet Cul De Sac
- Good Local Amenities
- EPC Rating D/Council Tax Band D/Leasehold
- Viewing: Banner Cross Office



While we endeavour to make our sales particulars fair, accurate and reliable, they are only a general guide to the property and, accordingly, if there is any point, which is of particular importance to you, please contact the relevant office. The Agents have not tested any apparatus, equipment, fittings or services and so cannot verify they are in working order. The buyer is advised to obtain verification. Please note all the measurement details are approximate and should not be relied upon as exact. All plans, floor plans and maps are for guidance purposes only and are not to scale. Under no circumstances should they be relied upon as exact or for use in planning carpets and other such fixtures, fittings or furnishings. YOUR HOME IS AT RISK IF YOU DO NOT KEEP UP REPAYMENTS ON A MORTGAGE OR OTHER LOAN SECURED ON IT. A Life Assurance policy may be requested. Written Quotations of credit terms available on request.

Approx. Gross Internal Floor Area 912 sq.ft / 84.71 sq.m

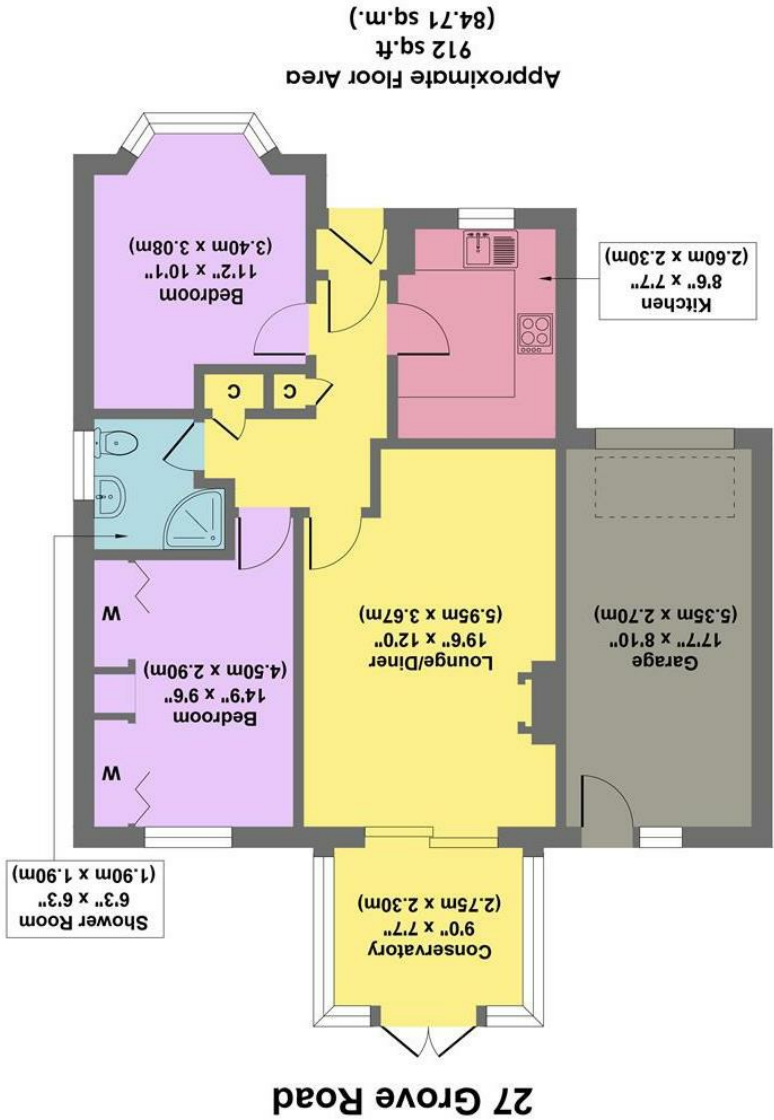


Illustration for identification purposes only, measurements are approximate, not to scale