



106 Cowlshaw Road, Sharrow Vale, Sheffield, S11 8XH



106 Cowlshaw Road

Sharrow Vale

Offers Over

£395,000

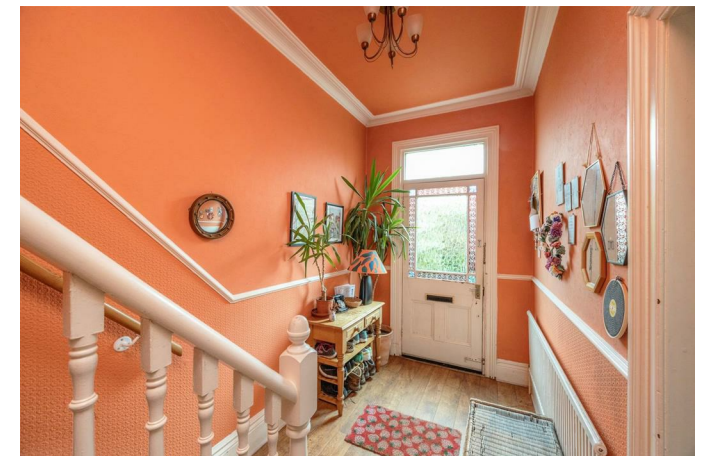
A much larger than average, bay fronted, five bedroom mid-terrace located in this ever popular residential area of Sharrow Vale within easy reach of a wide range of independent shops, cafes, bars and eateries as well as excellent schools and transport links.

Briefly, the accommodation comprises: A welcoming entrance hallway. Large family lounge to the front with bay window, central fireplace, coving and ceiling rose. Dining room to the rear with a central fireplace direct access onto the garden. Separate fitted kitchen having a range of units at wall and base level, integrated oven and electric hob with space for a breakfast table, fridge/freezer, dishwasher and washing machine. Basement cellars ideal for storage. To the first floor are two large double bedrooms, a further single bedroom and a modern family bathroom with bath and shower over, wash hand basin and W.C. A staircase rises to a useful landing/study area, two further double bedrooms with eaves storage and Velux windows.

Outside is a private mature garden with patio seating area and a range of established plants and shrubs.



- Five Spacious Bedrooms
- Much Larger Than Average Period Property
- First Class Schools Within Walking Distance
- Central Sharrow Vale Location Close To Popular Bars And Restaurants
- Private Mature Garden With Seating Area
- Regular Public Transport Links
- EPC Rating Rating E
- Council Tax Band C
- Leasehold 800 Years From 29 September 1895
- Viewing Via Banner Cross Office







Cellar
Floor area 26.6 m² (287 sq.ft.)

Ground Floor
Floor area 58.8 m² (633 sq.ft.)

First Floor
Floor area 54.3 m² (585 sq.ft.)

Second Floor
Floor area 41.7 m² (449 sq.ft.)

TOTAL: 181.5 m² (1,953 sq.ft.)

This floor plan is for illustrative purposes only. It is not drawn to scale. Any measurements, floor areas (including any total floor area), openings and orientations are approximate. No details are guaranteed, they cannot be relied upon for any purpose and do not form any part of any agreement. No liability is taken for any error, omission or misstatement. A party must rely upon its own inspection(s). Powered by www.Propertybox.io

While we endeavour to make our sales particulars fair, accurate and reliable, they are only a general guide to the property and, accordingly, if there is any point, which is of particular importance to you, please contact the relevant office. The Agents have not tested any apparatus, equipment, fittings or services and so cannot verify they are in working order. The buyer is advised to obtain verification. Please note all the measurement details are approximate and should not be relied upon as exact. All plans, floor plans and maps are for guidance purposes only and are not to scale. Under no circumstances should they be relied upon as exact or for use in planning carpets and other such fixtures, fittings or furnishings. YOUR HOME IS AT RISK IF YOU DO NOT KEEP UP REPAYMENTS ON A MORTGAGE OR OTHER LOAN SECURED ON IT. 'A Life Assurance policy may be requested.' 'Written Quotations of credit terms available on request.'

Banner Cross
T: 0114 268 3241
E: bannercross@saxtonmee.co.uk
www.saxtonmee.co.uk

Hathersage
T: 01433 650009
E: hathersage@saxtonmee.co.uk

Bakewell
T: 01629 815307
E: bakewell@saxtonmee.co.uk

Matlock
T: 01629 828250
E: matlock@saxtonmee.co.uk

