



Building Plot Moorview/Spring View, Stonelow, Eastmoor, Nr. Baslow, Peak National Park, S42 7DE



Building Plot Moorview/Spring View

Stonelow, Eastmoor

Offers Around

£800,000

A once in a lifetime opportunity has arisen to purchase an incredible large plot with planning permission for the discerning purchaser to build a large stone built detached country residence of 3,745 sqft and detached double garage and apartment of 797 sqft. Set back from the road and with 360 degree panoramic views over the Peak District.

Designed and planned to take full advantage of the views and a layout for modern contemporary living.

Situated close to Baslow which is a very picturesque village with excellent amenities and a highly rated primary school, adjoining the famous historic Chatsworth House, home of the Duke of Devonshire.

Sheffield approximately 12 miles - Chesterfield approximately 8 miles - M1 approximately 10 miles - Train Station approximately 3 miles - popular market town of Bakewell - approximately 6.5 miles - home to Lady Manners Secondary School and St Anselm's Private School.

Entrance Lobby, Inner Hall, Plant Room, Cloakroom with WC and wash hand basin, Laundry Room, Separate Boot Room, Family Room/Study, Open Plan Living Kitchen with Dining Area and Relaxation Area, Sitting Room. First Floor: Landing, Walk-in Linen Cupboard, Master Bedroom with En Suite Bathroom, Two Further Double Bedrooms with En Suites, Double Bedrooms Four and Five and Family Bathroom. Outside: Double Garage with Ancillary Accommodation to First Floor comprising Living Area and Bedroom with En Suite Shower Room.

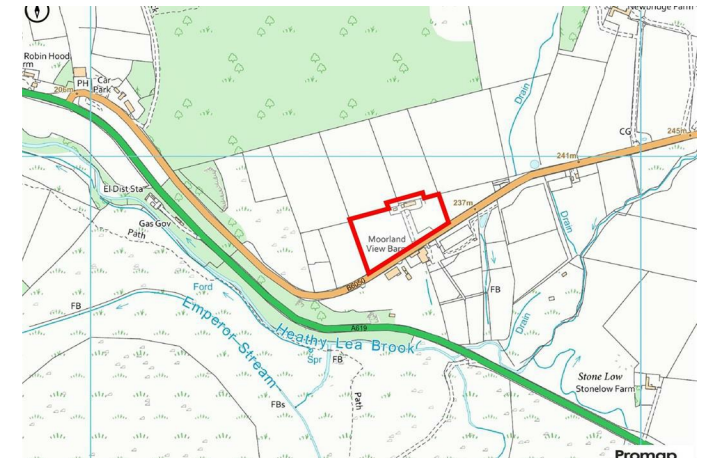
Services - Mains Electricity, Mains Water and Drainage to a Septic Tank.

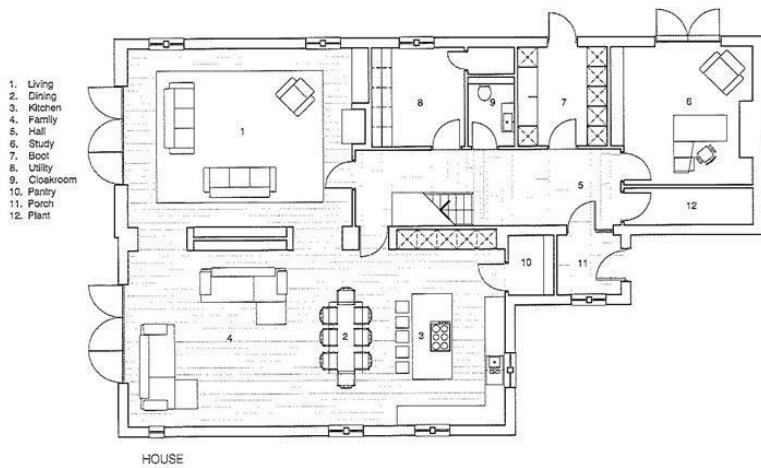
All plans included are for guidance purposes only and not to scale.

WhatThreeWords ///reeling.possibly.appointed which points to the bottom of the drive.

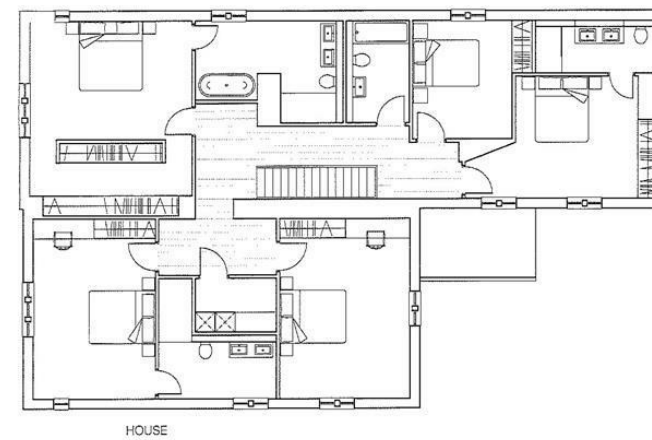
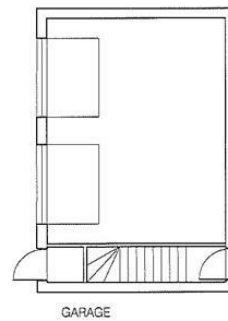


- Extremely Rare Opportunity
- Large Building Plot on the Edge of Baslow in the Peak National Park
- Planning Permission Dated 17 May 2024 - Ref: NP/DDD/1222/1617
- Currently Two Let Dwellings
- Approximately 4542 Sqft in Total
- Approximately 3.5 Acres of Land (Further 15.81 Acres Available)
- Stunning Private Secluded Location
- Excellent Local Primary School
- Baslow has Great Amenities
- Further Information Available via James Mee on 07775 998 200 / james.mee@saxtonmee.co.uk

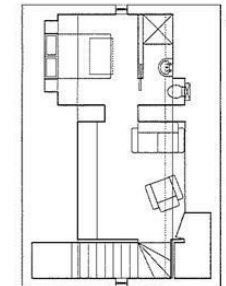




Ground Floor Plan - As Proposed



First Floor Plan - As Proposed



ANCILLARY ACCOMMODATION

While we endeavour to make our sales particulars fair, accurate and reliable, they are only a general guide to the property and, accordingly, if there is any point, which is of particular importance to you, please contact the relevant office. The Agents have not tested any apparatus, equipment, fittings or services and so cannot verify they are in working order. The buyer is advised to obtain verification. Please note all the measurement details are approximate and should not be relied upon as exact. All plans, floor plans and maps are for guidance purposes only and are not to scale. Under no circumstances should they be relied upon as exact or for use in planning carpets and other such fixtures, fittings or furnishings. YOUR HOME IS AT RISK IF YOU DO NOT KEEP UP REPAYMENTS ON A MORTGAGE OR OTHER LOAN SECURED ON IT. 'A Life Assurance policy may be requested.' 'Written Quotations of credit terms available on request.'

Banner Cross
T: 0114 268 3241
E: bannercross@saxtonmee.co.uk
www.saxtonmee.co.uk

Hathersage
T: 01433 650009
E: hathersage@saxtonmee.co.uk

Bakewell
T: 01629 815307
E: bakewell@saxtonmee.co.uk

Matlock
T: 01629 828250
E: matlock@saxtonmee.co.uk

