



8 Osborne Walk, Nether Edge, Sheffield, S11 9EP



8 Osborne Walk

Nether Edge

Guide Price

£350,000

GUIDE PRICE £350,000-£375,000

Perfect for a first time buyer, professional or those looking to downsize alike is this charming two bedroom mews house set within this exclusive gated development in the heart of Nether Edge.

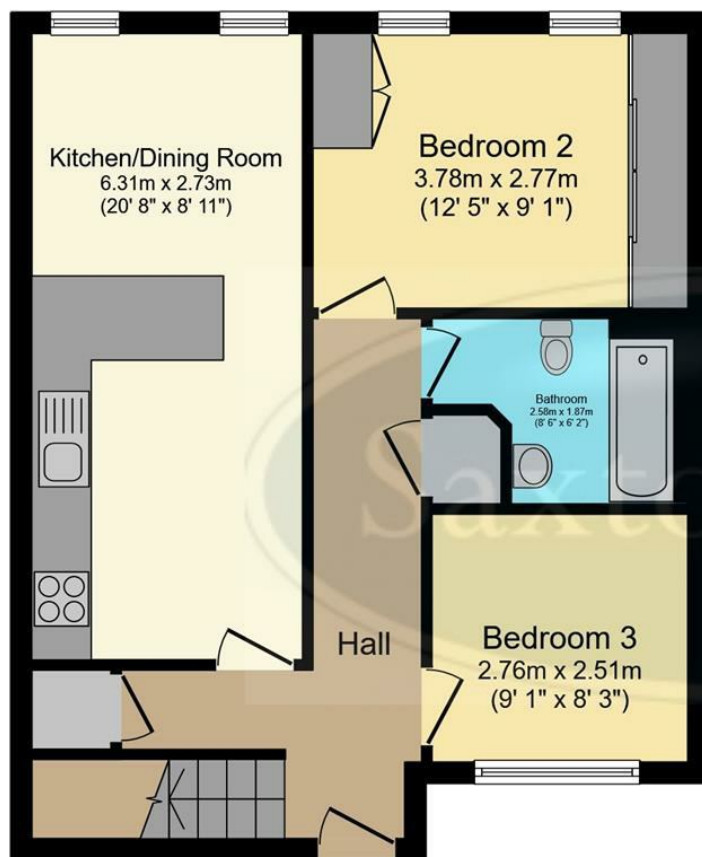
The property is offered for sale with NO CHAIN and briefly comprises: Entrance hallway with two useful storage cupboards, one of which houses the combi-boiler. Bedroom two to the front with floor to ceiling windows allowing for plenty of natural light. Modern, recently fitted bathroom with stylish matt black fittings having a bath and shower over, W.C and wash hand basin. Double bedroom two with fitted wardrobes. The kitchen/diner has a range of modern units at wall and base level with integrated oven, hob, dishwasher, fridge and freezer. Space for a washing machine. A breakfast bar provides a great entertaining area with further space beyond that for a formal dining table or informal snug seating area. Above the dining area is a vaulted ceiling. Encompassing the first floor in its entirety is the large lounge with high vaulted ceilings, Velux sky lights and access into a large store room.

Outside there is a private, gated garden area with porcelain tiled patio, artificial lawn and garden shed. One allocated parking space. On site gymnasium, sauna and swimming pool for private use by the residents.

- Two Double Bedrooms
- Stunning Recently Fitted Bathroom
- Gas Central Heating And Combi Boiler
- Large Lounge With Vaulted Ceilings
- Modern Fitted Kitchen With Integrated Appliances
- Plenty Of Fitted Storage Cupboards
- Private Enclosed Garden Area
- Exclusive Gated Development With Residents Gym And Pool
- EPC Rating: C / Tenure: Leasehold / Council Tax: Band C
- Viewing Via Banner Cross Office

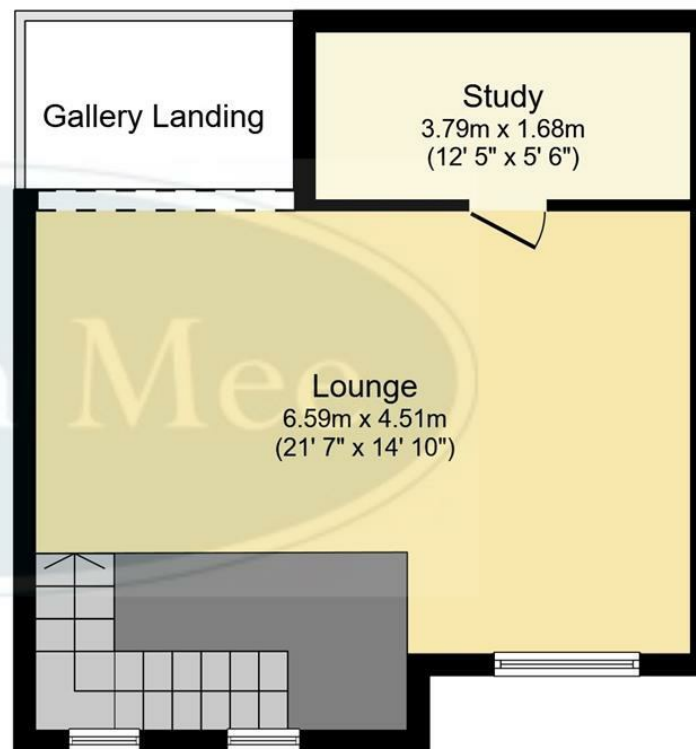






Ground Floor

Floor area 51.4 m² (553 sq.ft.)



First Floor

Floor area 39.3 m² (423 sq.ft.)

TOTAL: 90.7 m² (976 sq.ft.)

This floor plan is for illustrative purposes only. It is not drawn to scale. Any measurements, floor areas (including any total floor area), openings and orientations are approximate. No details are guaranteed, they cannot be relied upon for any purpose and do not form any part of any agreement. No liability is taken for any error, omission or misstatement. A party must rely upon its own inspection(s). Powered by www.Propertybox.io

While we endeavour to make our sales particulars fair, accurate and reliable, they are only a general guide to the property and, accordingly, if there is any point, which is of particular importance to you, please contact the relevant office. The Agents have not tested any apparatus, equipment, fittings or services and so cannot verify they are in working order. The buyer is advised to obtain verification. Please note all the measurement details are approximate and should not be relied upon as exact. All plans, floor plans and maps are for guidance purposes only and are not to scale. Under no circumstances should they be relied upon as exact or for use in planning carpets and other such fixtures, fittings or furnishings. YOUR HOME IS AT RISK IF YOU DO NOT KEEP UP REPAYMENTS ON A MORTGAGE OR OTHER LOAN SECURED ON IT. 'A Life Assurance policy may be requested.' 'Written Quotations of credit terms available on request.'

Banner Cross
T: 0114 268 3241
E: bannercross@saxtonmee.co.uk
www.saxtonmee.co.uk

Hathersage
T: 01433 650009
E: hathersage@saxtonmee.co.uk

Bakewell
T: 01629 815307
E: bakewell@saxtonmee.co.uk

Matlock
T: 01629 828250
E: matlock@saxtonmee.co.uk

