



175 Crimicar Lane, Fulwood, Sheffield, South Yorkshire, S10 4EH

Saxton Mee

175 Crimicar Lane

Fulwood

Guide Price

£200,000

GUIDE PRICE - £200,000 - £210,000

A well presented, second floor two bedroom apartment located in this enviable location within walking distance of village amenities, the Mayfield Valley and excellent public transport links.

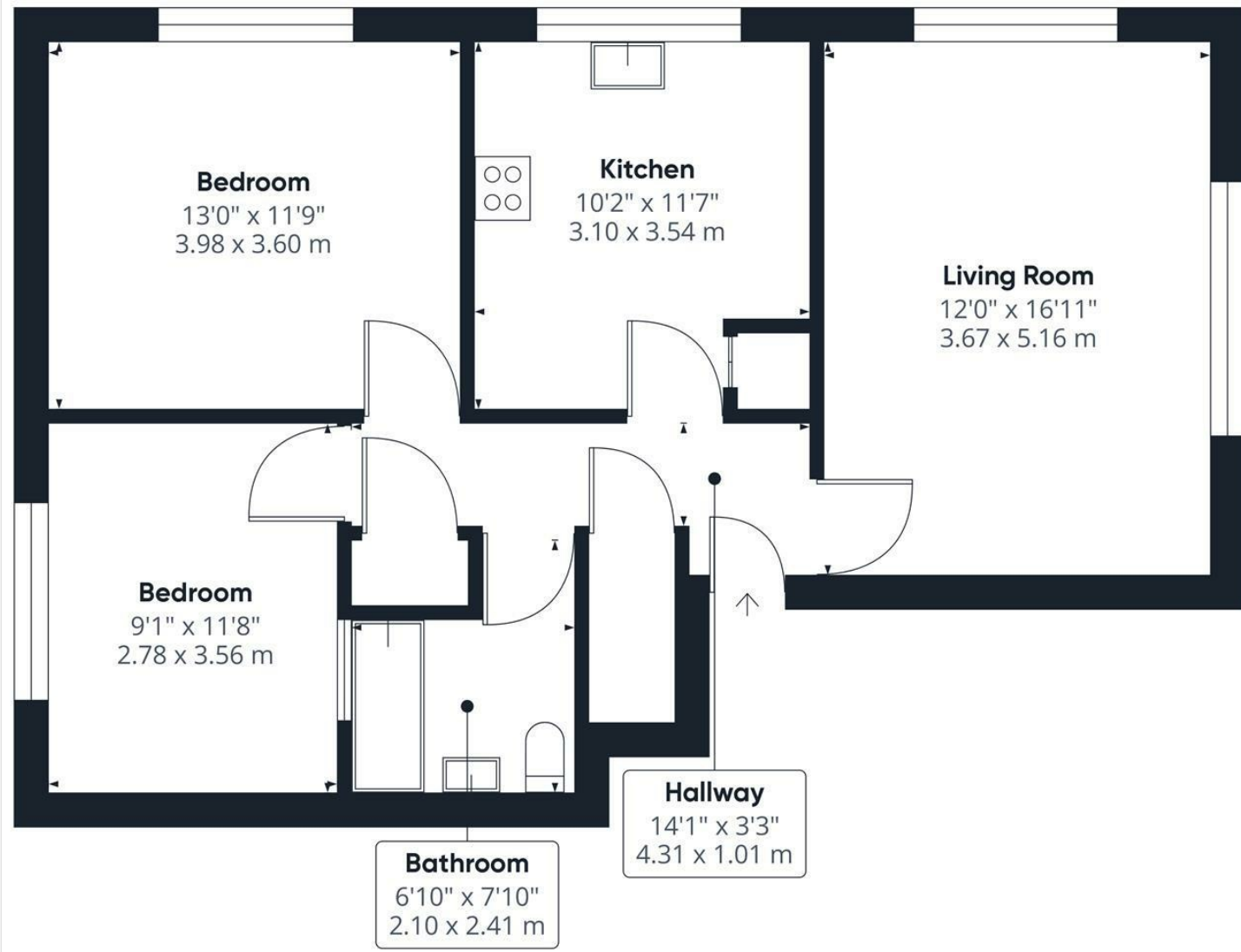
Briefly, the accommodation comprises: Entrance hallway with cloakroom storage cupboard, living room having a pleasant outlook, breakfast kitchen with a range of units, integrated oven and electric hob, space for a washing machine and fridge/freezer. Two double bedrooms and a modern bathroom with bath and shower over, wash hand basin and W.C.

Outside: Well kept grounds communal gardens with on site residents parking and separate single garage having an up/over door.

- Two Double Bedrooms
- Sought After Location On The Edge Of Mayfield Valley
- Top Floor Apartment
- Residents Parking And Separate Garage
- Early Viewing Advised
- Tenure: Leasehold
- Council Tax: Band B
- EPC Rating: D
- Viewing Via Banner Cross Office







Approximate total area⁽¹⁾
721.48 ft²
67.03 m²

(1) Excluding balconies and terraces.

While every attempt has been made to ensure accuracy, all measurements are approximate, not to scale. This floor plan is for illustrative purposes only.

GIRAFFE360

While we endeavour to make our sales particulars fair, accurate and reliable, they are only a general guide to the property and, accordingly, if there is any point, which is of particular importance to you, please contact the relevant office. The Agents have not tested any apparatus, equipment, fittings or services and so cannot verify they are in working order. The buyer is advised to obtain verification. Please note all the measurement details are approximate and should not be relied upon as exact. All plans, floor plans and maps are for guidance purposes only and are not to scale. Under no circumstances should they be relied upon as exact or for use in planning carpets and other such fixtures, fittings or furnishings. YOUR HOME IS AT RISK IF YOU DO NOT KEEP UP REPAYMENTS ON A MORTGAGE OR OTHER LOAN SECURED ON IT. 'A Life Assurance policy may be requested.' 'Written Quotations of credit terms available on request.'

Banner Cross
T: 0114 268 3241
E: bannercross@saxtonmee.co.uk
www.saxtonmee.co.uk

Hathersage
T: 01433 650009
E: hathersage@saxtonmee.co.uk

Bakewell
T: 01629 815307
E: bakewell@saxtonmee.co.uk

Matlock
T: 01629 828250
E: matlock@saxtonmee.co.uk

