



24 Green Oak Avenue, Totley, Sheffield, S17 4FZ



24 Green Oak Avenue

Totley

Guide Price

£270,000

GUIDE PRICE £270,000-£280,000

Finished to a very high specification, with tasteful modern contemporary decor, is this three bedroom mid-townhouse located in the popular area of Totley.

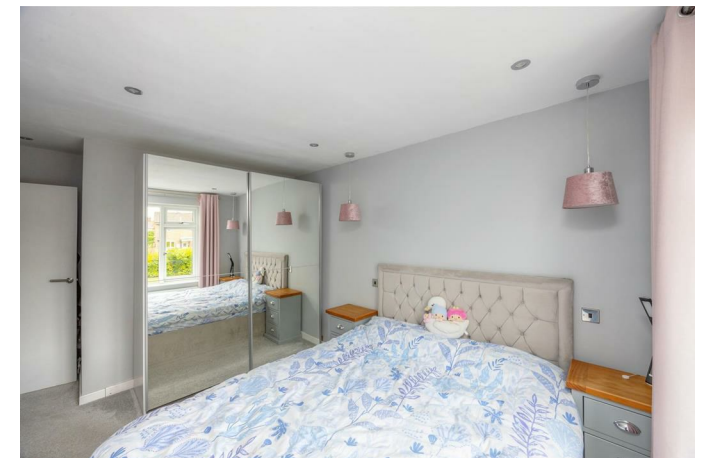
Briefly, the accommodation comprises: Entrance lobby. Large open plan kitchen/diner having a range of wall, drawer and base units with integrated double oven and hob, fridge/freezer, washing machine and dishwasher opening into the bright and spacious family lounge with bespoke cabinetry and access onto the garden. To the first floor is a modern family bathroom with bath and rainfall shower over, W.C, wash basin and tiling to the walls. There are three very generously proportioned bedrooms and a useful loft space ideal for storage accessed via ladder.

Outside: Ample on street parking. Outdoor brick built store. Private gated garden with artificial lawn and patio seating area, ideal for hosting and entertaining.

Green Oak Avenue is an ideal location for a young family with access to excellent schools nearby, a range of shops on Baslow Road, Green Oak Park a stones throw away and the beautiful Peak District National Park within a 5 minute drive.



- Modern Decor And High Quality Fittings Throughout
- Private Low Maintenance Garden
- Ample On Street Parking
- Excellent Schools Nearby
- Close To Shops, Bars And Restaurants
- Fully Renovated In 2022 By The Previous Owners
- EPC Rating: D
- Council Tax: Band A
- Tenure: Freehold
- Viewing Via Banner Cross Office

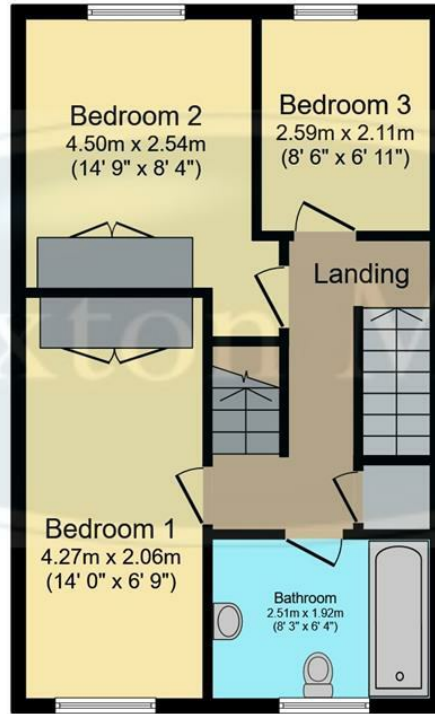






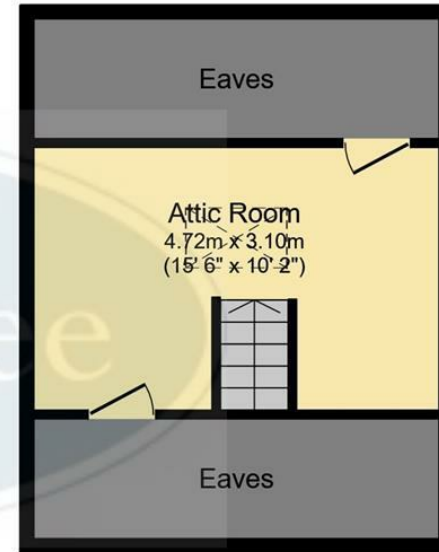
Ground Floor

Floor area 38.8 m² (417 sq.ft.)



First Floor

Floor area 38.3 m² (413 sq.ft.)



Second Floor

Floor area 15.8 m² (170 sq.ft.)

TOTAL: 92.9 m² (1,000 sq.ft.)

This floor plan is for illustrative purposes only. It is not drawn to scale. Any measurements, floor areas (including any total floor area), openings and orientations are approximate. No details are guaranteed, they cannot be relied upon for any purpose and do not form any part of any agreement. No liability is taken for any error, omission or misstatement. A party must rely upon its own inspection(s). Powered by www.Propertybox.io

While we endeavour to make our sales particulars fair, accurate and reliable, they are only a general guide to the property and, accordingly, if there is any point, which is of particular importance to you, please contact the relevant office. The Agents have not tested any apparatus, equipment, fittings or services and so cannot verify they are in working order. The buyer is advised to obtain verification. Please note all the measurement details are approximate and should not be relied upon as exact. All plans, floor plans and maps are for guidance purposes only and are not to scale. Under no circumstances should they be relied upon as exact or for use in planning carpets and other such fixtures, fittings or furnishings. YOUR HOME IS AT RISK IF YOU DO NOT KEEP UP REPAYMENTS ON A MORTGAGE OR OTHER LOAN SECURED ON IT. 'A Life Assurance policy may be requested.' 'Written Quotations of credit terms available on request.'

Banner Cross
T: 0114 268 3241
E: bannercross@saxtonmee.co.uk
www.saxtonmee.co.uk

Hathersage
T: 01433 650009
E: hathersage@saxtonmee.co.uk

Bakewell
T: 01629 815307
E: bakewell@saxtonmee.co.uk

Matlock
T: 01629 828250
E: matlock@saxtonmee.co.uk

