



12 Hallam Chase, 64 Endcliffe Vale Road, Endcliffe, Sheffield, S10 3EW

Saxton Mee

12 Hallam Chase, 64 Endcliffe

Endcliffe

Offers Around

£100,000

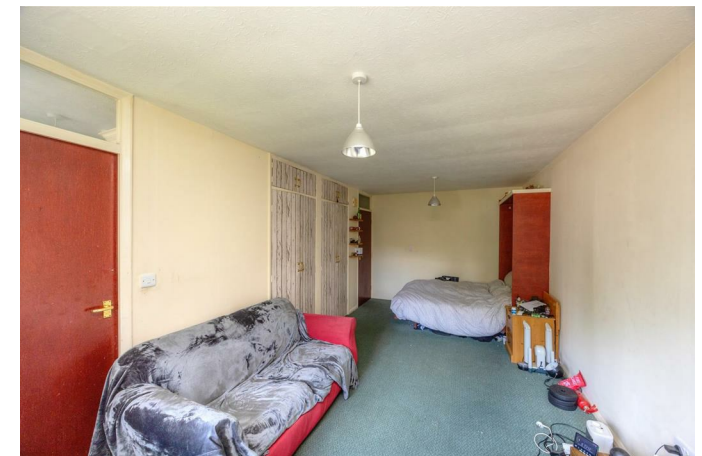
**** ATTENTION INVESTORS ** NO CHAIN ****

In need of updating, and for sale with tenants in situ, is this studio apartment set within this popular residential development close to the Universities, hospitals and a wealth of amenities on Ecclesall Road and in Broomhill.

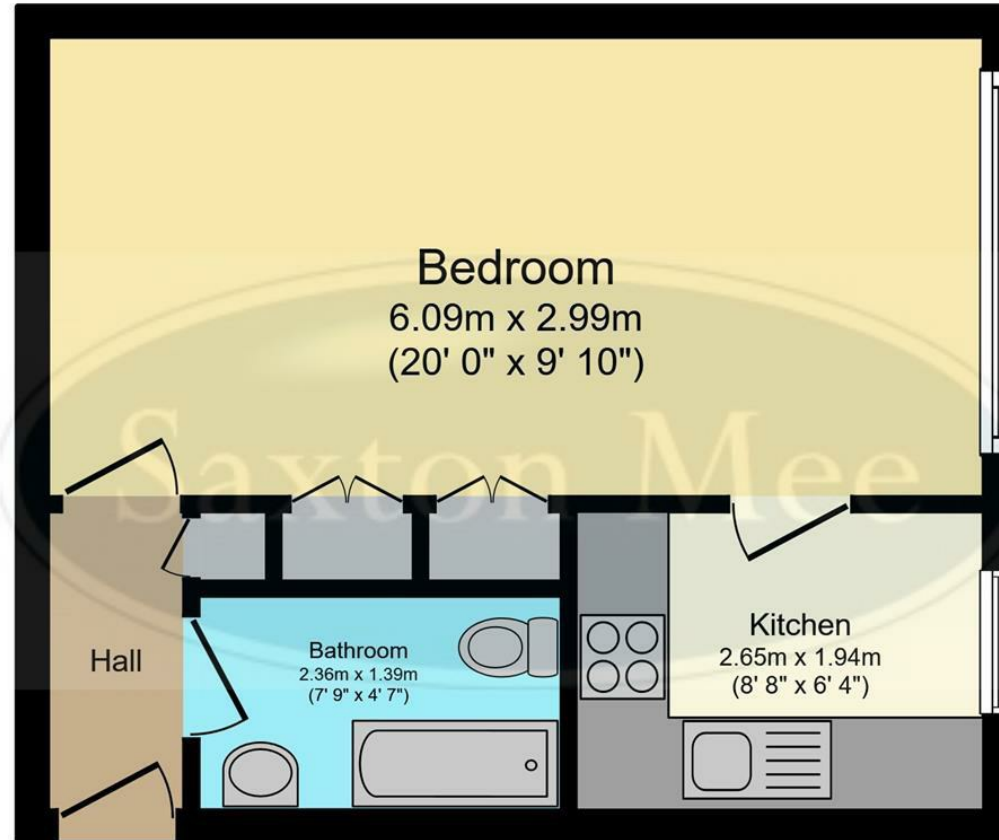
The property is currently let on a periodic tenancy, achieving £525 PCM. The accommodation briefly comprises: Entrance hallway with cloakroom storage cupboard. Bathroom with bath and shower over, wash hand basin and W.C. Open plan lounge/bedroom and access into the kitchen having a range of units, integrated oven and hob, with space for a fridge/freezer. UPVC double glazing and electric heating system.

Outside there is ample on site residents parking and beautifully maintained communal grounds for residents to enjoy.

- No Onward Chain
- Ideal Investment Opportunity
- Studio Apartment
- Close To The Universities And Hospitals
- Excellent Amenities Nearby In Broomhill And Ecclesall
- Currently Let Achieving £525 PCM
- In Need Of Updating Throughout
- EPC Rating: TBC / Council Tax: Band A
- Tenure: Leasehold
- Viewing Via Banner Cross Office







Floor Plan

Floor area 30.6 m² (330 sq.ft.)

TOTAL: 30.6 m² (330 sq.ft.)

This floor plan is for illustrative purposes only. It is not drawn to scale. Any measurements, floor areas (including any total floor area), openings and orientations are approximate. No details are guaranteed, they cannot be relied upon for any purpose and do not form any part of any agreement. No liability is taken for any error, omission or misstatement. A party must rely upon its own inspection(s). Powered by www.Propertybox.io

While we endeavour to make our sales particulars fair, accurate and reliable, they are only a general guide to the property and, accordingly, if there is any point, which is of particular importance to you, please contact the relevant office. The Agents have not tested any apparatus, equipment, fittings or services and so cannot verify they are in working order. The buyer is advised to obtain verification. Please note all the measurement details are approximate and should not be relied upon as exact. All plans, floor plans and maps are for guidance purposes only and are not to scale. Under no circumstances should they be relied upon as exact or for use in planning carpets and other such fixtures, fittings or furnishings. YOUR HOME IS AT RISK IF YOU DO NOT KEEP UP REPAYMENTS ON A MORTGAGE OR OTHER LOAN SECURED ON IT. 'A Life Assurance policy may be requested.' 'Written Quotations of credit terms available on request.'

Banner Cross
T: 0114 268 3241
E: bannercross@saxtonmee.co.uk
www.saxtonmee.co.uk

Hathersage
T: 01433 650009
E: hathersage@saxtonmee.co.uk

Bakewell
T: 01629 815307
E: bakewell@saxtonmee.co.uk

Matlock
T: 01629 828250
E: matlock@saxtonmee.co.uk

