



155 Hemper Lane, Greenhill, Sheffield, S8 7FB

Saxton Mee

155 Hemper Lane

Greenhill

Offers Around

£395,000

A charming and characterful three bedroom 18th century cottage located in this sought after and convenient location of Greenhill, within easy reach of shops, bus links and popular local schools.

The property enjoys a private position, set back from the road with the accommodation briefly comprising: Entrance porch and hallway. Large family lounge with central fireplace and sliding glazed doors leading into the sun lounge. Separate dining room. Fitted country-style kitchen with a range of wall, drawer and base units. Integrated double oven and gas hob. Space for an under counter fridge, freezer and washing machine. Rear utility room, downstairs W.C and access into the store room/games room. To the first floor are three good sized bedrooms, a useful study/nursery room and a family bathroom with bath and shower over, wash basin and separate W.C.

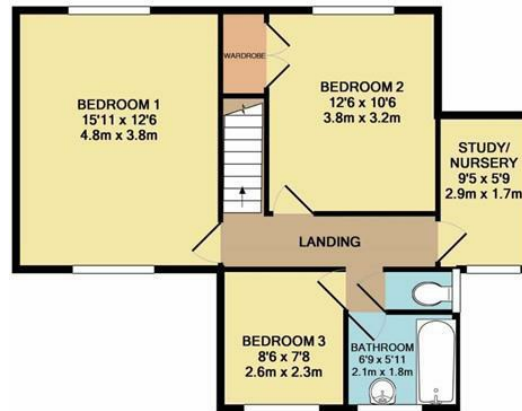
The gardens to the rear are mature and beautifully maintained with a range of established planted areas, patio seating area, potting shed, greenhouse, lawn and vegetable patch. To the front is a large gated driveway providing ample off street parking and a lawn with established borders.



- A Beautiful Period Property
- Established Gardens To The Front And Rear
- Three Sizeable Reception Rooms
- Multi-Purpose Store Room
- Three Good Sized Bedrooms And A Separate Study
- Sought After Residential Location
- EPC Rating: TBC
- Council Tax: Band C
- Tenure: Freehold
- Viewing Via Banner Cross Office







HEMPER LANE, SHEFFIELD, S8 7FB
TOTAL APPROX. FLOOR AREA 1413 SQ.FT. (131.2 SQ.M.)

Whilst every attempt has been made to ensure the accuracy of the floor plan contained here, measurements of doors, windows, rooms and any other items are approximate and no responsibility is taken for any error, omission, or mis-statement. This plan is for illustrative purposes only and should be used as such by any prospective purchaser. The services, systems and appliances shown have not been tested and no guarantee as to their operability or efficiency can be given
Made with Metropix ©2019

While we endeavour to make our sales particulars fair, accurate and reliable, they are only a general guide to the property and, accordingly, if there is any point, which is of particular importance to you, please contact the relevant office. The Agents have not tested any apparatus, equipment, fittings or services and so cannot verify they are in working order. The buyer is advised to obtain verification. Please note all the measurement details are approximate and should not be relied upon as exact. All plans, floor plans and maps are for guidance purposes only and are not to scale. Under no circumstances should they be relied upon as exact or for use in planning carpets and other such fixtures, fittings or furnishings. YOUR HOME IS AT RISK IF YOU DO NOT KEEP UP REPAYMENTS ON A MORTGAGE OR OTHER LOAN SECURED ON IT. 'A Life Assurance policy may be requested.' 'Written Quotations of credit terms available on request.'

Banner Cross
T: 0114 268 3241
E: bannercross@saxtonmee.co.uk
www.saxtonmee.co.uk

Hathersage
T: 01433 650009
E: hathersage@saxtonmee.co.uk

Bakewell
T: 01629 815307
E: bakewell@saxtonmee.co.uk

Matlock
T: 01629 828250
E: matlock@saxtonmee.co.uk

