



15-25

Ground Floor Apartment, 25 Norfolk Park Drive, Norfolk Park, Sheffield, S2

Saxton Mee

Ground Floor Apartment, Norfolk Park

Offers Around

£100,000

A ground floor two bedroom apartment situated in this popular development, having the benefit of a garage but in need of some updating and modernisation.

Located only a short distance from the City Centre with bus and supertram stops on the doorstep, the property is for sale with immediate vacant possession.

The accommodation comprises: entrance lobby, lounge/dining room with patio doors leading to the outside, separate kitchen. Inner lobby with cupboard housing the warm air ducted central heating unit, bedroom one with built-in wardrobes, bedroom two with built-in wardrobes and bathroom with full suite. Outside: single garage and communal grounds.

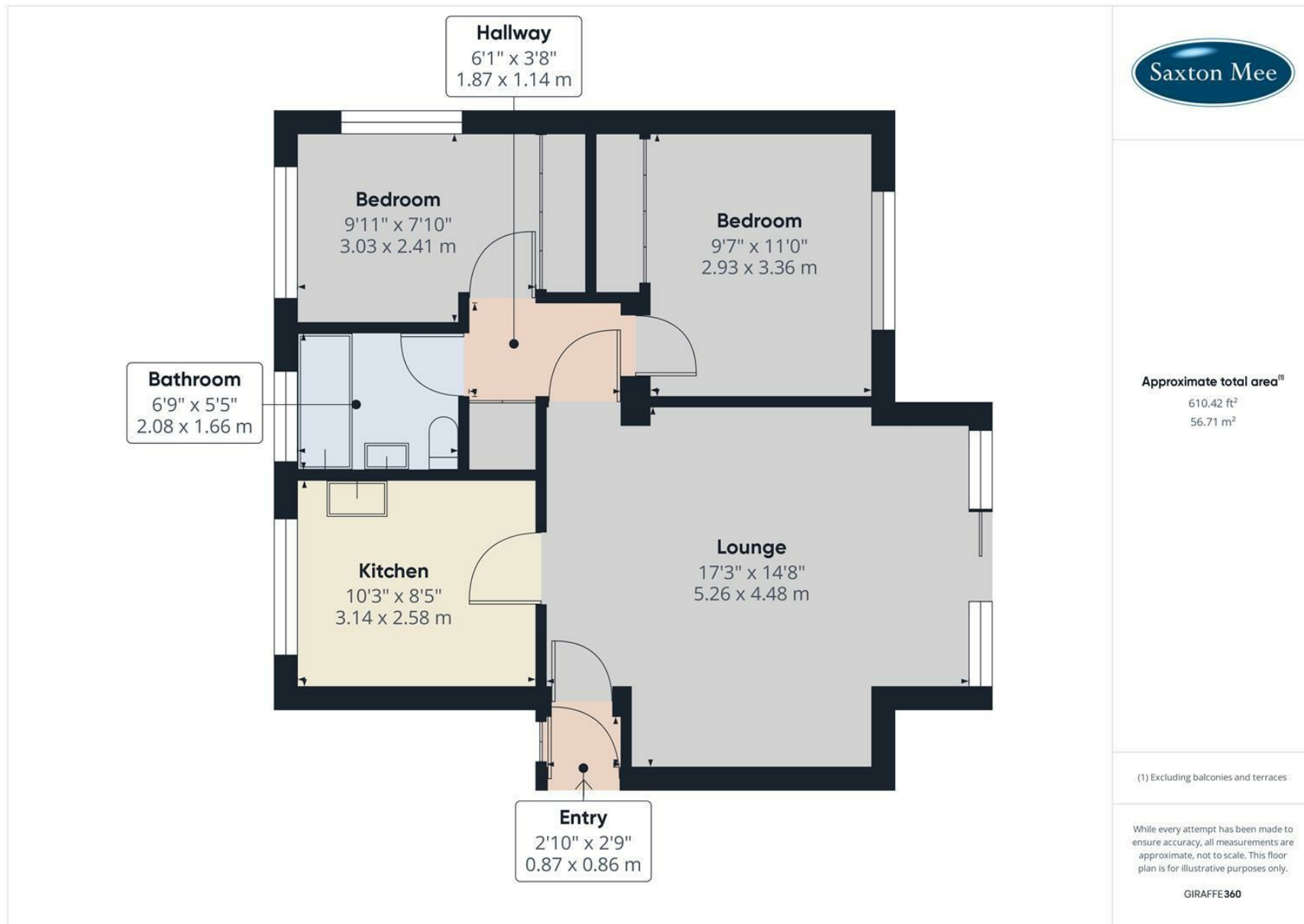
*This property is being sold by the executors and is sold as seen.



- Ground Floor Apartment in Popular Development
- Security Entry System
- In Need of Some Updating and Improvement
- Spacious Lounge/Dining Room with Patio Doors to Outside
- Single Garage
- Two Good Bedrooms
- Communal Grounds
- Easy Access of Bus Stop and Tram Service and City Centre
- EPC Rating TBC
- Viewing: Banner Cross Office







While we endeavour to make our sales particulars fair, accurate and reliable, they are only a general guide to the property and, accordingly, if there is any point, which is of particular importance to you, please contact the relevant office. The Agents have not tested any apparatus, equipment, fittings or services and so cannot verify they are in working order. The buyer is advised to obtain verification. Please note all the measurement details are approximate and should not be relied upon as exact. All plans, floor plans and maps are for guidance purposes only and are not to scale. Under no circumstances should they be relied upon as exact or for use in planning carpets and other such fixtures, fittings or furnishings. YOUR HOME IS AT RISK IF YOU DO NOT KEEP UP REPAYMENTS ON A MORTGAGE OR OTHER LOAN SECURED ON IT. 'A Life Assurance policy may be requested.' 'Written Quotations of credit terms available on request.'

Banner Cross
T: 0114 268 3241
E: bannercross@saxtonmee.co.uk
www.saxtonmee.co.uk

Hathersage
T: 01433 650009
E: hathersage@saxtonmee.co.uk

Bakewell
T: 01629 815307
E: bakewell@saxtonmee.co.uk

Matlock
T: 01629 828250
E: matlock@saxtonmee.co.uk

