



109 Headford Gardens, Broomhall, Sheffield, S3 7XB

Saxton Mee

109 Headford Gardens

Broomhall

Guide Price

£225,000

GUIDE PRICE £225,000-£235,000

Located within close proximity to the City Centre, on this private development at top of quiet cul-de-sac, is this three bedroom end town house with allocated parking and for sale with NO ONWARD CHAIN.

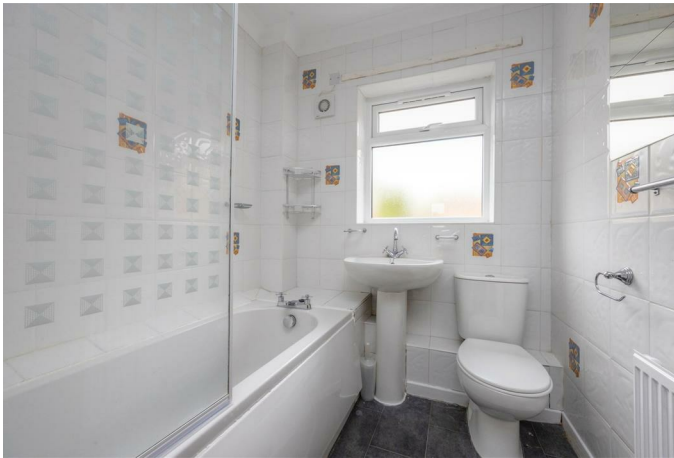
The property briefly comprises: Entrance hallway. Lounge to the front. Separate dining room with French doors onto the garden. Separate kitchen having a range of wall, drawer and base units with freestanding cooker, washing machine and fridge/freezer. To the first floor are three good sized bedrooms and a family bathroom comprising a white suite of bath, shower over, wash basin and W.C.

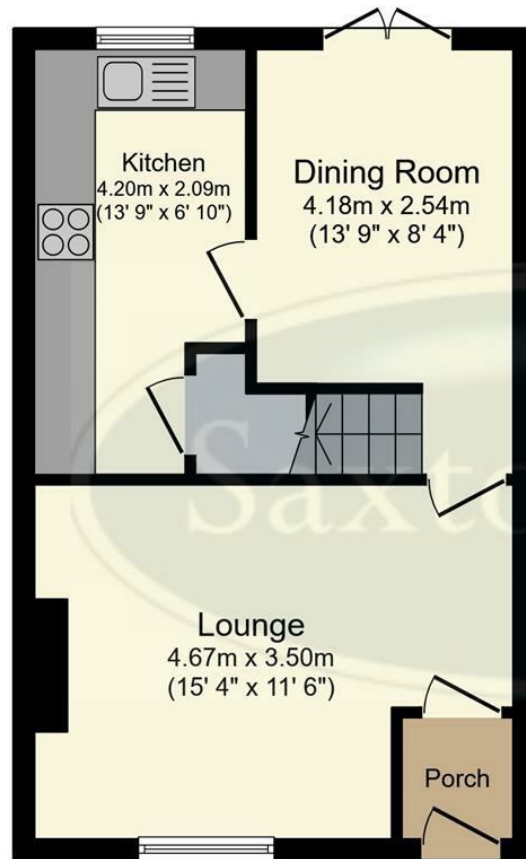
Outside to the rear is a private garden mainly laid to lawn. private driveway and ample visitor parking bays.



- No Onward Chain
- Three Good Sized Bedrooms
- City Centre Location With Excellent Amenities Close By
- Within Walking Distance Of Both The Universities And Hospitals
- Private Garden Mainly Laid To Lawn
- Ideal First Home Or Investment Property
- EPC Rating: C
- Council Tax: Band A
- Leasehold: 125 Years From 25th September 1992
- Viewing Via Banner Cross Office

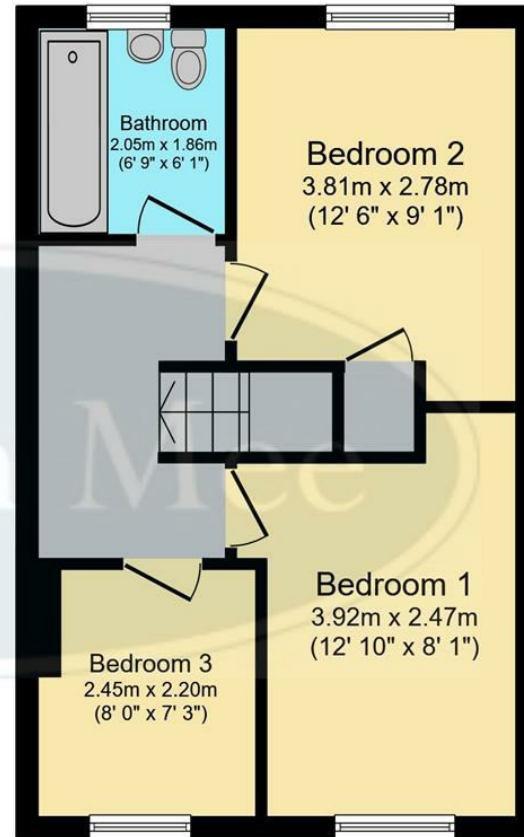






Ground Floor

Floor area 36.9 m² (397 sq.ft.)



First Floor

Floor area 36.9 m² (397 sq.ft.)

TOTAL: 73.8 m² (794 sq.ft.)

This floor plan is for illustrative purposes only. It is not drawn to scale. Any measurements, floor areas (including any total floor area), openings and orientations are approximate. No details are guaranteed, they cannot be relied upon for any purpose and do not form any part of any agreement. No liability is taken for any error, omission or misstatement. A party must rely upon its own inspection(s). Powered by www.Propertybox.io

While we endeavour to make our sales particulars fair, accurate and reliable, they are only a general guide to the property and, accordingly, if there is any point, which is of particular importance to you, please contact the relevant office. The Agents have not tested any apparatus, equipment, fittings or services and so cannot verify they are in working order. The buyer is advised to obtain verification. Please note all the measurement details are approximate and should not be relied upon as exact. All plans, floor plans and maps are for guidance purposes only and are not to scale. Under no circumstances should they be relied upon as exact or for use in planning carpets and other such fixtures, fittings or furnishings. YOUR HOME IS AT RISK IF YOU DO NOT KEEP UP REPAYMENTS ON A MORTGAGE OR OTHER LOAN SECURED ON IT. 'A Life Assurance policy may be requested.' 'Written Quotations of credit terms available on request.'

Banner Cross
T: 0114 268 3241
E: bannercross@saxtonmee.co.uk
www.saxtonmee.co.uk

Hathersage
T: 01433 650009
E: hathersage@saxtonmee.co.uk

Bakewell
T: 01629 815307
E: bakewell@saxtonmee.co.uk

Matlock
T: 01629 828250
E: matlock@saxtonmee.co.uk

