



9 Gatefield Road, Nether Edge, Sheffield, S7 1RD



9 Gatefield Road

Nether Edge

Offers Around

£350,000

For sale with NO CHAIN is this substantial four bedroom Victorian mid-terrace located on a quiet road in the heart of popular Nether Edge, within walking distance of excellent schools, a wide range of amenities and regular transport links.

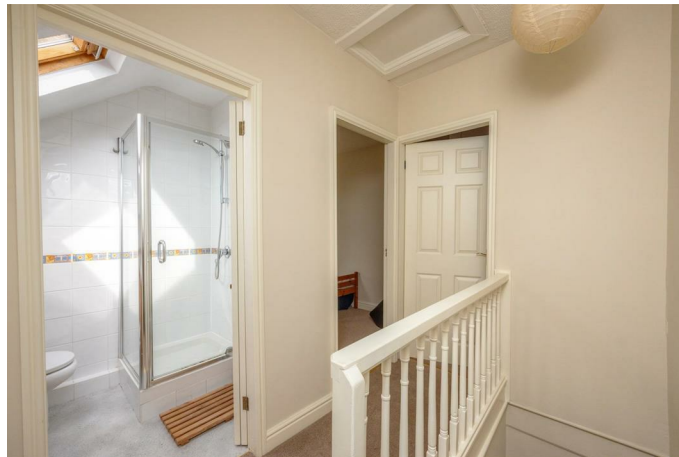
The property does require some renovation however it has recently been re-decorated throughout including new carpets. The accommodation briefly comprising: Entrance hallway. Large family lounge to the front with bay window and central fireplace. A spacious dining room and a ground floor W.C. A large kitchen enjoys a range of fitted units and space for a washing machine, fridge/freezer and dishwasher with integrated oven and hob and with access to the cellar. French doors lead onto the private garden. To the first floor are two large double bedrooms, a separate study/nursery and a large family bathroom with bath, separate shower, W.C and wash hand basin. On the second floor, there are two further good sized bedrooms and a shower room.

Outside there is a courtyard to the front with steps rising to the first floor. The rear garden benefits from no third party access across and is mainly laid to lawn with patio seating area and fencing to the borders. In addition, there is also a useful outdoor store.



- NO ONWARD CHAIN
- Much Larger Than Average Victorian Terrace
- Four Double Bedrooms And Additional Study/Nursery
- Some Renovation Work Required
- Re-Decorated And Re-Carpeted
- Lovely Rear Garden
- Popular Residential Area With Excellent Amenities And Well Regarded Local Schools
- Council Tax Band B/EPC Rating E
- Freehold
- Viewing Via Banner Cross Office







Cellar
Floor area 20.3 m² (219 sq.ft.)

Ground Floor
Floor area 61.9 m² (666 sq.ft.)

First Floor
Floor area 53.3 m² (574 sq.ft.)

Second Floor
Floor area 35.0 m² (377 sq.ft.)

TOTAL: 170.5 m² (1,835 sq.ft.)

This floor plan is for illustrative purposes only. It is not drawn to scale. Any measurements, floor areas (including any total floor area), openings and orientations are approximate. No details are guaranteed, they cannot be relied upon for any purpose and do not form any part of any agreement. No liability is taken for any error, omission or misstatement. A party must rely upon its own inspection(s). Powered by www.Propertybox.io

While we endeavour to make our sales particulars fair, accurate and reliable, they are only a general guide to the property and, accordingly, if there is any point, which is of particular importance to you, please contact the relevant office. The Agents have not tested any apparatus, equipment, fittings or services and so cannot verify they are in working order. The buyer is advised to obtain verification. Please note all the measurement details are approximate and should not be relied upon as exact. All plans, floor plans and maps are for guidance purposes only and are not to scale. Under no circumstances should they be relied upon as exact or for use in planning carpets and other such fixtures, fittings or furnishings. YOUR HOME IS AT RISK IF YOU DO NOT KEEP UP REPAYMENTS ON A MORTGAGE OR OTHER LOAN SECURED ON IT. 'A Life Assurance policy may be requested.' 'Written Quotations of credit terms available on request.'

Banner Cross
T: 0114 268 3241
E: bannercross@saxtonmee.co.uk
www.saxtonmee.co.uk

Hathersage
T: 01433 650009
E: hathersage@saxtonmee.co.uk

Bakewell
T: 01629 815307
E: bakewell@saxtonmee.co.uk

Matlock
T: 01629 828250
E: matlock@saxtonmee.co.uk

