



14 Munro Court Bartin Close, Ecclesall, Sheffield, S11 9GF



# 14 Munro Court Bartin Close

## Ecclesall

Guide Price

# £130,000

GUIDE PRICE £130,000-£135,000

For sale with NO CHAIN is this one bedroom, first floor corner apartment located in this popular over 55's development in Ecclesall, within walking distance of local shops, transport links and enjoying pleasant views.

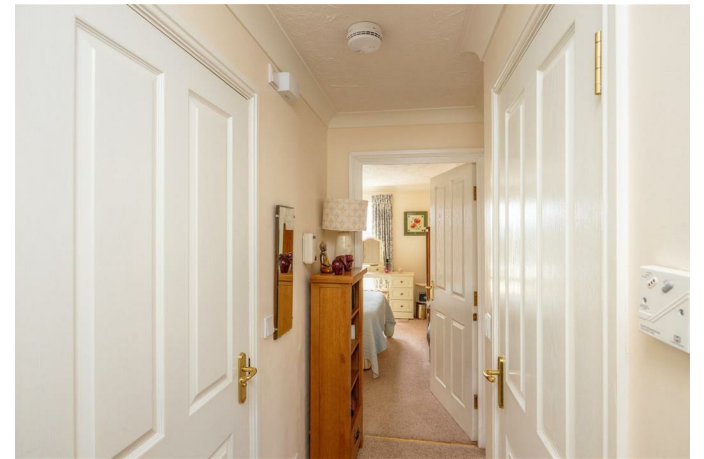
The apartment comprises: Entrance hallway with store cupboard. Modern, recently fitted wet room with W.C and wash basin, a large double bedroom with separate dressing room/study, a spacious lounge with Juliet balcony and a separate kitchen with a range of units, built in oven and hob as well as space for an under counter fridge.

The property benefits from an on-site warden, 24 hour care line, residents' laundry room and lounge, UPVC double glazing and electric storage heaters throughout.

Externally there are beautiful communal gardens and residents/visitor parking spaces.



- One Bedroom Over 55's Apartment
- Beautiful Communal Grounds
- Pleasant Views From The Lounge With Juliet Balcony
- Various On-Site Facilities And Benefits
- Close To An Array Of Shops And Regular Transport Links
- EPC Rating: B
- Council Tax: Band B
- Tenure: Leasehold 125 Years from 1st July 2005
- Early Viewing Advised
- Viewing Via Banner Cross Office





## Floor Plan

Floor area 52.2 sq.m. (561 sq.ft.)

**TOTAL: 52.2 sq.m. (561 sq.ft.)**

This floor plan is for illustrative purposes only. It is not drawn to scale. Any measurements, floor areas (including any total floor area), openings and orientations are approximate. No details are guaranteed, they cannot be relied upon for any purpose and do not form any part of any agreement. No liability is taken for any error, omission or misstatement. A party must rely upon its own inspection(s). Powered by [www.Propertybox.io](http://www.Propertybox.io)

While we endeavour to make our sales particulars fair, accurate and reliable, they are only a general guide to the property and, accordingly, if there is any point, which is of particular importance to you, please contact the relevant office. The Agents have not tested any apparatus, equipment, fittings or services and so cannot verify they are in working order. The buyer is advised to obtain verification. Please note all the measurement details are approximate and should not be relied upon as exact. All plans, floor plans and maps are for guidance purposes only and are not to scale. Under no circumstances should they be relied upon as exact or for use in planning carpets and other such fixtures, fittings or furnishings. YOUR HOME IS AT RISK IF YOU DO NOT KEEP UP REPAYMENTS ON A MORTGAGE OR OTHER LOAN SECURED ON IT. 'A Life Assurance policy may be requested.' 'Written Quotations of credit terms available on request.'

Banner Cross  
T: 0114 268 3241  
E: [bannercross@saxtonmee.co.uk](mailto:bannercross@saxtonmee.co.uk)  
[www.saxtonmee.co.uk](http://www.saxtonmee.co.uk)

Dronfield  
T: 01246 290992  
E: [dronfield@saxtonmee.co.uk](mailto:dronfield@saxtonmee.co.uk)

Hathersage  
T: 01433 650009  
E: [hathersage@saxtonmee.co.uk](mailto:hathersage@saxtonmee.co.uk)

Bakewell  
T: 01629 815307  
E: [bakewell@saxtonmee.co.uk](mailto:bakewell@saxtonmee.co.uk)

**Saxton Mee**