



20 Barmouth Road, Nether Edge, Sheffield, S7 2DH



# 20 Barmouth Road

## Nether Edge

Offers Around

# £350,000

**\*\* NO CHAIN \*\***

A much larger than average and well presented five bedroom/three bathroom mid-terrace located on this little known cul-de-sac in the heart of the popular Sheffield Antiques Quarter, within walking distance of amenities, transport links and schools in nearby Nether Edge, Abbeydale and Ecclesall.

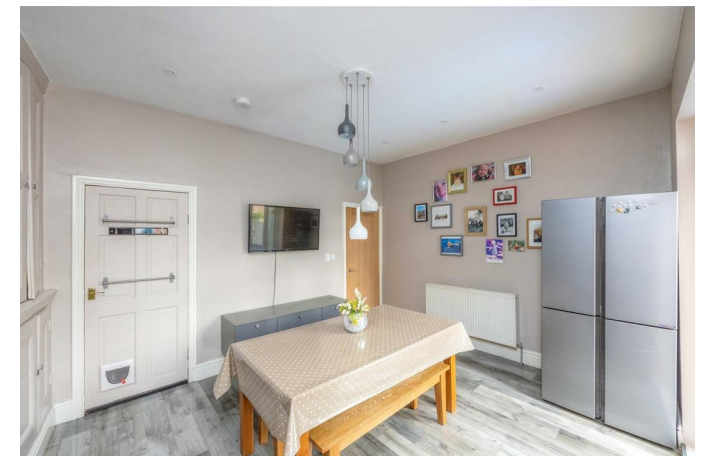
The property has been upgraded to a good standard by the current owners and enjoys spacious accommodation briefly comprising: Side entrance lobby with stairs to the first floor. A large bay windowed family lounge with feature fireplace and modern decor. The rear of the property encompasses the modern dining kitchen with a range of units, integrated appliances and ample dining space. Cellar ideal for storage. French doors lead onto the garden.

To the first floor and enjoying accommodation over the passage is the master bedroom with stylish en suite, double bedroom two and a modern family bathroom with W.C, wash basin, bath and shower. A further staircase rises to three good sized single bedrooms with Velux windows and a further shower room.

Outside is a private garden with no third party access over, artificial lawn, seating area and summer house.



- NO CHAIN
- Larger Than Average Mid Terrace Property With Five Bedrooms/Three Bathrooms
- Stylishly Presented Throughout
- Ideal For A Family With Spacious Living Accommodation
- Private Low Maintenance Garden
- Quiet Cul-De-Sac Location In The Popular Antiques Quarter
- Close To Sought After Locations Of Nether Edge, Abbeydale and Ecclesall
- Council Tax Band A/EPC Rating E
- Leasehold 800 Years From 25 December 1897
- Viewing Via Banner Cross Office







**Cellar**  
 Floor area 20.0 m<sup>2</sup>  
 (215 sq.ft.)

**Ground Floor**  
 Floor area 39.8 m<sup>2</sup>  
 (428 sq.ft.)

**First Floor**  
 Floor area 41.9 m<sup>2</sup> (451  
 sq.ft.)

**Second Floor**  
 Floor area 32.3 m<sup>2</sup> (347  
 sq.ft.)

**TOTAL: 133.9 m<sup>2</sup> (1,442 sq.ft.)**

This floor plan is for illustrative purposes only. It is not drawn to scale. Any measurements, floor areas (including any total floor area), openings and orientations are approximate. No details are guaranteed, they cannot be relied upon for any purpose and do not form any part of any agreement. No liability is taken for any error, omission or misstatement. A party must rely upon its own inspection(s). Powered by [www.Propertybox.io](http://www.Propertybox.io)

While we endeavour to make our sales particulars fair, accurate and reliable, they are only a general guide to the property and, accordingly, if there is any point, which is of particular importance to you, please contact the relevant office. The Agents have not tested any apparatus, equipment, fittings or services and so cannot verify they are in working order. The buyer is advised to obtain verification. Please note all the measurement details are approximate and should not be relied upon as exact. All plans, floor plans and maps are for guidance purposes only and are not to scale. Under no circumstances should they be relied upon as exact or for use in planning carpets and other such fixtures, fittings or furnishings. YOUR HOME IS AT RISK IF YOU DO NOT KEEP UP REPAYMENTS ON A MORTGAGE OR OTHER LOAN SECURED ON IT. 'A Life Assurance policy may be requested.' 'Written Quotations of credit terms available on request.'

Banner Cross  
 T: 0114 268 3241  
 E: [bannercross@saxtonmee.co.uk](mailto:bannercross@saxtonmee.co.uk)  
[www.saxtonmee.co.uk](http://www.saxtonmee.co.uk)

Hathersage  
 T: 01433 650009  
 E: [hathersage@saxtonmee.co.uk](mailto:hathersage@saxtonmee.co.uk)

Bakewell  
 T: 01629 815307  
 E: [bakewell@saxtonmee.co.uk](mailto:bakewell@saxtonmee.co.uk)

Matlock  
 T: 01629 828250  
 E: [matlock@saxtonmee.co.uk](mailto:matlock@saxtonmee.co.uk)

