



6 Edmund Avenue, Bradway, Sheffield, S17 4RN



6 Edmund Avenue

Bradway

Offers In The Region Of

£387,500

An immaculately presented, three bedroom, modern and stylish detached bungalow situated on this good sized plot of 0.22 acres on a quiet through road at the top of Bradway, Sheffield.

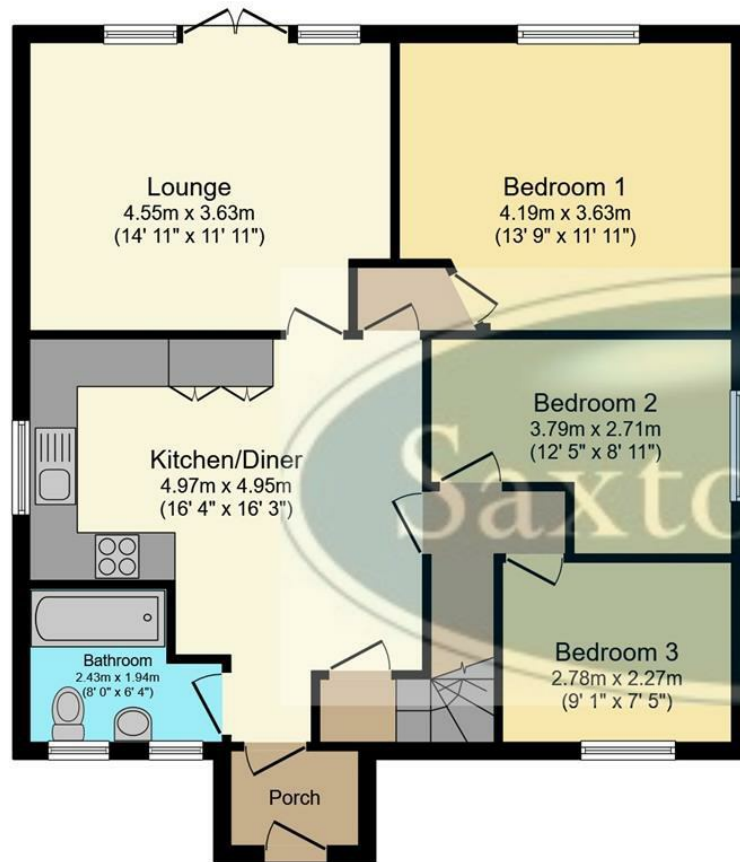
The property has undergone a full scheme of renovations in recent years with the accommodation briefly comprising: Entrance hallway. A large open plan dining kitchen having a range of contemporary wall, drawer and base units with space for a fridge/freezer, washing machine and dishwasher. Sitting room to the rear with French doors onto the garden. Two double bedrooms and a further generous single bedroom three. Modern family bathroom. Stairs rise to a useful occasional loft room.

Outside there is a block paved driveway for multiple cars to the front and the rear garden enjoys a private space to sit out with patio area and mainly laid to lawn.

- Two Double Bedrooms And A Useful Attic Room
- Large Plot Extending To 0.22 Acres
- Modern And Stylish Interior
- Substantial Off Street Parking To The Front
- Sought After Location At The Top Of Bradway
- Excellent Local Amenities, Schools & Transport Link
- Tenure: Freehold
- EPC Rating: D
- Council Tax: C
- Viewing Via Banner Cross Office

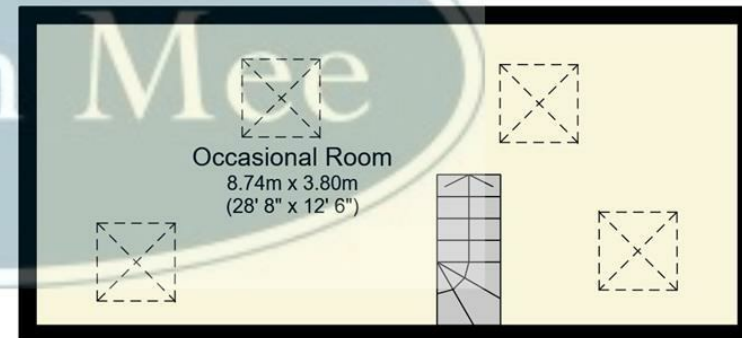






Ground Floor

Floor area 80.0 m² (861 sq.ft.)



First Floor

Floor area 33.6 m² (362 sq.ft.)

TOTAL: 113.6 m² (1,222 sq.ft.)

This floor plan is for illustrative purposes only. It is not drawn to scale. Any measurements, floor areas (including any total floor area), openings and orientations are approximate. No details are guaranteed, they cannot be relied upon for any purpose and do not form any part of any agreement. No liability is taken for any error, omission or misstatement. A party must rely upon its own inspection(s). Powered by www.Propertybox.io

While we endeavour to make our sales particulars fair, accurate and reliable, they are only a general guide to the property and, accordingly, if there is any point, which is of particular importance to you, please contact the relevant office. The Agents have not tested any apparatus, equipment, fittings or services and so cannot verify they are in working order. The buyer is advised to obtain verification. Please note all the measurement details are approximate and should not be relied upon as exact. All plans, floor plans and maps are for guidance purposes only and are not to scale. Under no circumstances should they be relied upon as exact or for use in planning carpets and other such fixtures, fittings or furnishings. YOUR HOME IS AT RISK IF YOU DO NOT KEEP UP REPAYMENTS ON A MORTGAGE OR OTHER LOAN SECURED ON IT. 'A Life Assurance policy may be requested.' 'Written Quotations of credit terms available on request.'

Banner Cross
T: 0114 268 3241
E: bannercross@saxtonmee.co.uk
www.saxtonmee.co.uk

Hathersage
T: 01433 650009
E: hathersage@saxtonmee.co.uk

Bakewell
T: 01629 815307
E: bakewell@saxtonmee.co.uk

Matlock
T: 01629 828250
E: matlock@saxtonmee.co.uk

