



22 Windsor House 900 Abbeydale Road, Sheffield, S7 2BN



22 Windsor House 900

Offers Around

£160,000

A beautifully presented TWO bedroom, SECOND floor apartment with lift access situated in this delightful McCarthy & Stone retirement living development close to all local amenities and in a great location and offered for sale with no onward chain.

The property briefly comprises, entrance hall, spacious lounge side facing window, fitted kitchen with a range of units and drawers as well as integrated appliances including a Neff oven and hob with extractor fan, integral fridge and freezer and freestanding dishwasher. The master bedroom is fitted with wardrobes, bedroom two is also a double room and the non slip wet room with both bath and walk in shower is very spacious. There is a further additional W.C.

This lovely apartment benefits from all the amenities at Windsor House including fantastic communal lounge area for meeting friends, dining area and an active social life for residents to enjoy based around these. Assistance and catering are also available. The complex offers a guest suite and parking spaces for visitors if required and well equipped free laundry facilities.

The monthly service charge includes many benefits such as; a free hour of laundry assistance per week. Servicing of all the community areas and facilities. Water rates. 24 hour emergency call system and building insurance. Social activities e.g. film nights - looking to encourage more groups. Dining room with table service restaurant is subsidized - open daily for homeowners and families. Chefs make up picnic bags - tasty nutritious lunches.

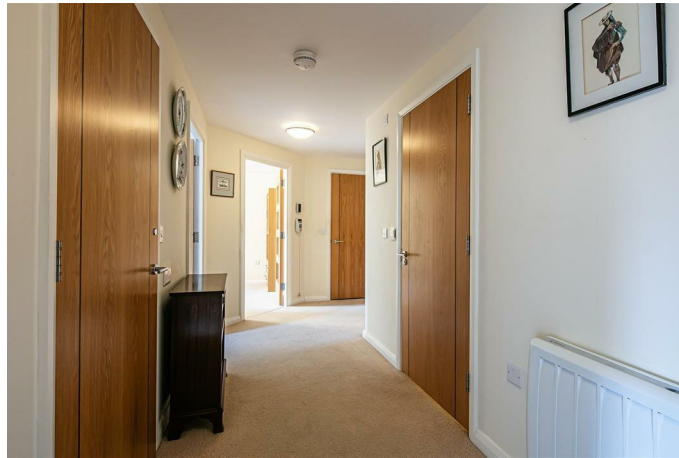
Tenure: Leasehold

Council Tax: C



- Delightful Retirement Living
- Sought After Location
- Excellent Transport Links
- A Wide Range Of Local Shops
- No Onward Chain
- EPC Rating: B / Council Tax: Band C
- Tenure: Leasehold
- Viewing Via Banner Cross Office
- Landscaped Gardens & Car Parking
- 24 hours emergency call cover





While we endeavour to make our sales particulars fair, accurate and reliable, they are only a general guide to the property and, accordingly, if there is any point, which is of particular importance to you, please contact the relevant office. The Agents have not tested any apparatus, equipment, fittings or services and so cannot verify they are in working order. The buyer is advised to obtain verification. Please note all the measurement details are approximate and should not be relied upon as exact. All plans, floor plans and maps are for guidance purposes only and are not to scale. Under no circumstances should they be relied upon as exact or for use in planning carpets and other such fixtures, fittings or furnishings. YOUR HOME IS AT RISK IF YOU DO NOT KEEP UP REPAYMENTS ON A MORTGAGE OR OTHER LOAN SECURED ON IT. 'A Life Assurance policy may be requested.' 'Written Quotations of credit terms available on request.'

Banner Cross

T: 0114 268 3241

E: bannercross@saxtonmee.co.uk

www.saxtonmee.co.uk

Hathersage

T: 01433 650009

E: hathersage@saxtonmee.co.uk

Bakewell

T: 01629 815307

E: bakewell@saxtonmee.co.uk

Matlock

T: 01629 828250

E: matlock@saxtonmee.co.uk

