



458B Ecclesall Road, Sheffield S11 8PX £1,400 Per Calendar Month

Suitable for family, professional sharers or students

Beautiful 3 double bed recently refurbished fully furnished flat opposite Tescos and Berkley Centre and close to bars, restaurants and public transport to the city centre.

The accommodation comprises; Open plan living room with Ikea holmsund corner sofa having to pull out double guest bed, wall mounted flat screen TV, extending dining table and chairs.

Kitchen area with base and wall units, oven, hob, extractor, tall fridge freezer, washing machine and microwave.

Shower room is fully tiled with large shower cubicle, wash hand basin and WC

Three double bedrooms all with double bed, wardrobe, chest of drawers, desk/dressing table, chair and bedside cabinet. Outside: The flat has shared use of the rear garden

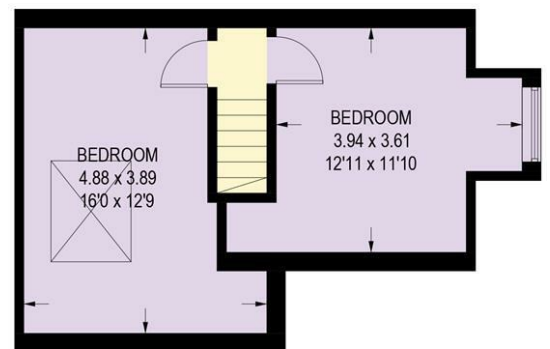
FURNISHED 6-12 MONTH TENANCY. Restrictions - No smokers or pets. Energy Efficiency Rating E. Council Tax Band A

458B ECCLESALL ROAD

APPROXIMATE GROSS INTERNAL AREA = 80.9 SQ M / 870 SQ FT

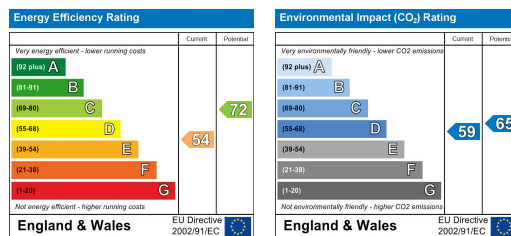


FIRST FLOOR = 48.9 SQ M / 526 SQ FT



SECOND FLOOR = 32 SQ M / 344 SQ FT

Illustration for identification purposes only, measurements are approximate, not to scale.



Banner Cross
Hathersage
Bakewell
Matlock
www.saxtonmee.co.uk

949-951 Ecclesall Road, Sheffield S11 8TN
3 Bank View, Main Road, Hathersage S32 1BB
Matlock Street, Bakewell DE45 1EE
27 Causeway Lane, Matlock, DE4 3AR

T: 0114 268 3241
T: 01433 650009
T: 01629 815307
T: 01629 828250

E: bannercross@saxtonmee.co.uk
E: hathersage@saxtonmee.co.uk
E: bakewell@saxtonmee.co.uk
E: matlock@saxtonmee.co.uk