



24 The Dale, Sheffield S8 0PW



Lettings



## 24 The Dale

Per Calendar Month

### £895 Per Calendar

On offer for rent is this first floor, two bedroom apartment set within a unique four storey complex with allocated off street parking, communal landscaped garden and electric heating. Situated in the heart of the Woodseats and only moments from an array of amenities and shops.

The immaculate contemporary accommodation comprises: spacious lounge, kitchen with modern fitted units and integrated dishwasher, fridge, washer machine and oven and hob. Double master bedroom with en-suite bathroom, good sized bedroom two and bathroom with three piece white suite and shower over.

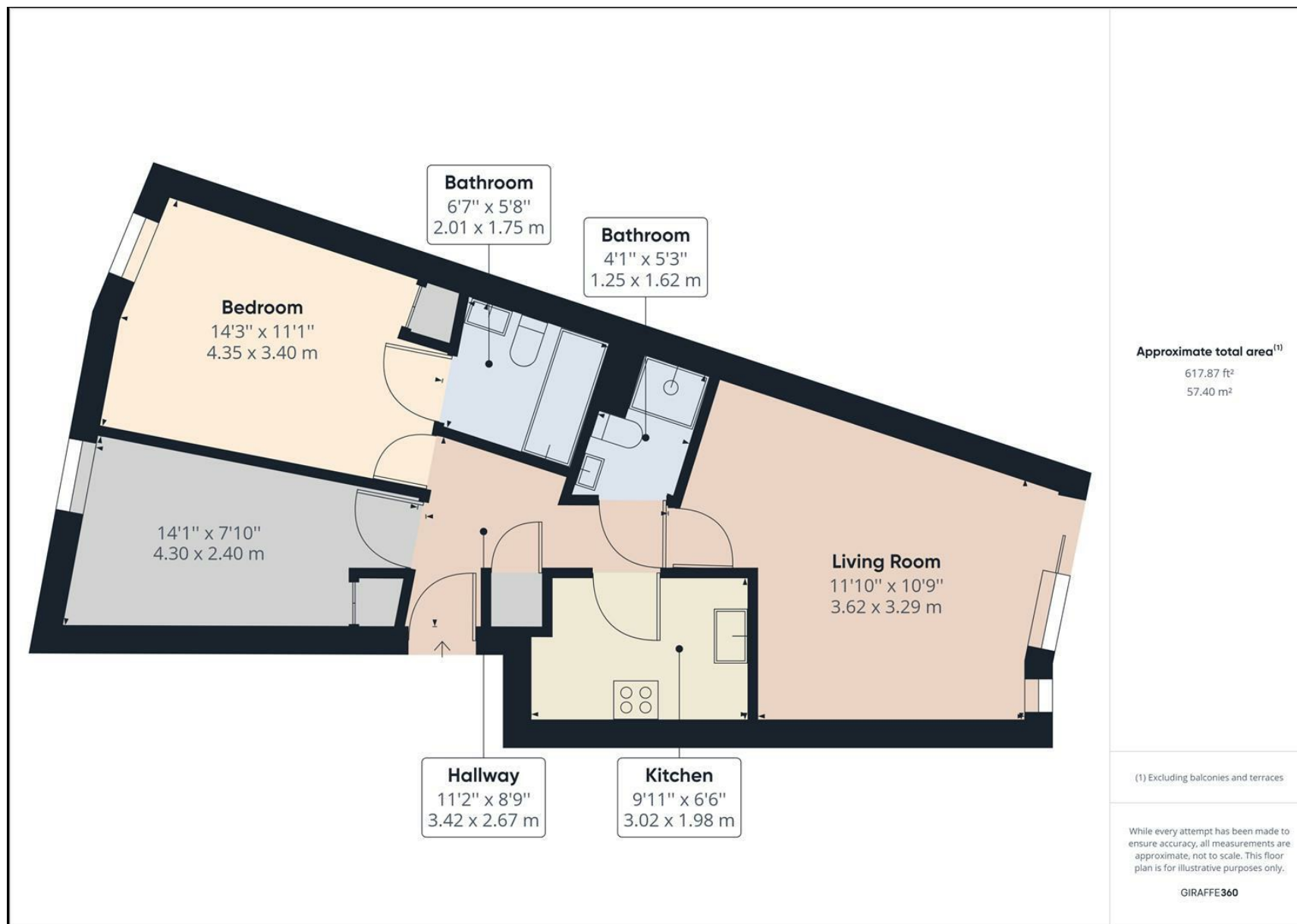
PART FURNISHED 6 or 12 MONTH TENANCY.

Restrictions: No smokers, pets or students. Energy Efficiency Rating B Council Tax Band B









While we endeavour to make our sales particulars fair, accurate and reliable, they are only a general guide to the property and, accordingly, if there is any point, which is of particular importance to you, please contact the relevant office. The Agents have not tested any apparatus, equipment, fittings or services and so cannot verify they are in working order. The buyer is advised to obtain verification. Please note all the measurement details are approximate and should not be relied upon as exact. All plans, floor plans and maps are for guidance purposes only and are not to scale. Under no circumstances should they be relied upon as exact or for use in planning carpets and other such fixtures, fittings or furnishings. YOUR HOME IS AT RISK IF YOU DO NOT KEEP UP REPAYMENTS ON A MORTGAGE OR OTHER LOAN SECURED ON IT. 'A Life Assurance policy may be requested.' 'Written Quotations of credit terms available on request.'

**Banner Cross**  
T: 0114 268 3241  
E: [bannercross@saxtonmee.co.uk](mailto:bannercross@saxtonmee.co.uk)  
[www.saxtonmee.co.uk](http://www.saxtonmee.co.uk)

**Hathersage**  
T: 01433 650009  
E: [hathersage@saxtonmee.co.uk](mailto:hathersage@saxtonmee.co.uk)

**Bakewell**  
T: 01629 815307  
E: [bakewell@saxtonmee.co.uk](mailto:bakewell@saxtonmee.co.uk)

**Matlock**  
T: 01629 828250  
E: [matlock@saxtonmee.co.uk](mailto:matlock@saxtonmee.co.uk)