



38 Tapton Mount Close, Broomhill, Sheffield S10 5DJ



Lettings

38 Tapton Mount Close

Broomhill

Per Calendar Month

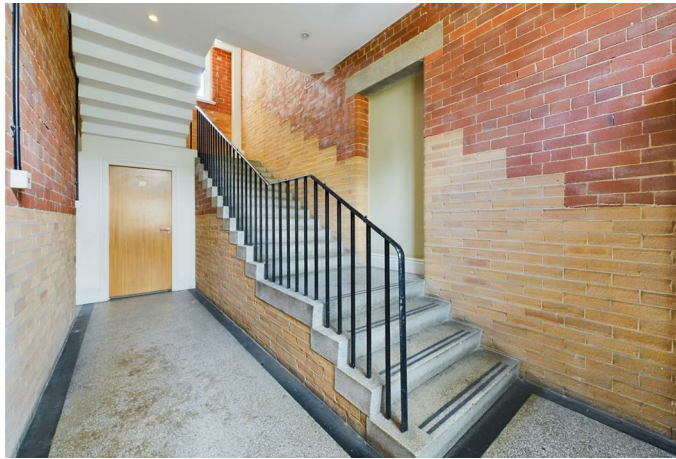
£760 Per Calendar

Situated in the grounds of this luxury development in the heart of Broomhill is this highly spacious, impeccably finished, one bedroom ground floor apartment.

Ideal for the professional couple with its short bus journey to the schools, hospitals and universities, the property comprises; large open plan kitchen/living/dining room housing a washing machine and fridge freezer, master double bedroom and shower room. Outside; communal grounds and parking space for one vehicle.

UNFURNISHED 12 MONTH TENANCY. Restrictions: No smokers, no pets. Energy Efficiency Rating D Council Tax Band B







While we endeavour to make our sales particulars fair, accurate and reliable, they are only a general guide to the property and, accordingly, if there is any point, which is of particular importance to you, please contact the relevant office. The Agents have not tested any apparatus, equipment, fittings or services and so cannot verify they are in working order. The buyer is advised to obtain verification. Please note all the measurement details are approximate and should not be relied upon as exact. All plans, floor plans and maps are for guidance purposes only and are not to scale. Under no circumstances should they be relied upon as exact or for use in planning carpets and other such fixtures, fittings or furnishings. YOUR HOME IS AT RISK IF YOU DO NOT KEEP UP REPAYMENTS ON A MORTGAGE OR OTHER LOAN SECURED ON IT. 'A Life Assurance policy may be requested.' 'Written Quotations of credit terms available on request.'

Banner Cross
T: 0114 268 3241
E: bannercross@saxtonmee.co.uk
www.saxtonmee.co.uk

Hathersage
T: 01433 650009
E: hathersage@saxtonmee.co.uk

Bakewell
T: 01629 815307
E: bakewell@saxtonmee.co.uk

Matlock
T: 01629 828250
E: matlock@saxtonmee.co.uk