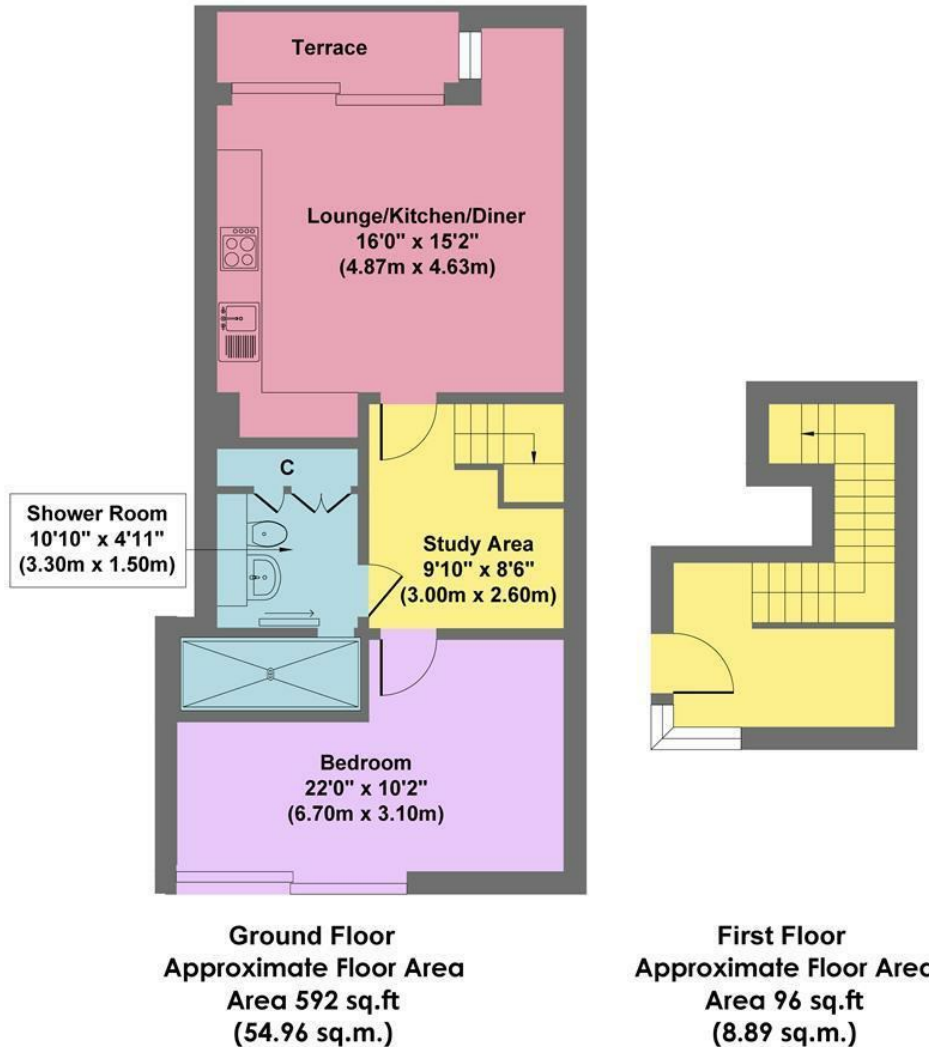




Apt 6 Gilbert South Street, Sheffield S2 5QY **£825 Per Calendar Month**

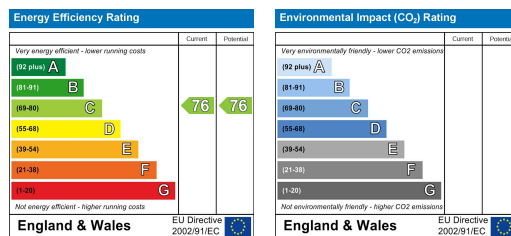
A stunning one bedroom apartment in this iconic development close to Sheffield City Centre. Beautifully designed inside, many of the walls have been stripped back to their original concrete, tying the inside of the apartment to the iconic concrete structure of the Park Hill development itself - listed as one of Europe's finest examples of modern, brutalist architecture. This fabulous home which has many interesting features comprises; Entrance Lobby, open plan lounge/kitchen diner with floor to ceiling windows providing ample natural light, having integrated appliances and spacious balcony overlooking the gardens. This lovely home has a spacious double bedroom and shower room with double cubicle, wash hand basin and w/c. The apartment benefits from a secure entry system and glass lift to all floors. UNFURNISHED 12 MONTH TENANCY. Restrictions: No smokers or pets. Energy Efficiency Rating B. Council Tax Band A

Gilbert, Apt 3, South Street



Approx. Gross Internal Floor Area 688 sq.ft / 63.85 sq.m

Illustration for identification puposes only ,measurements are approximate, not to scale



Banner Cross
Hathersage
Bakewell
Matlock
www.saxtonmee.co.uk

949-951 Ecclesall Road, Sheffield S11 8TN
3 Bank View, Main Road, Hathersage S32 1BB
Matlock Street, Bakewell DE45 1EE
27 Causeway Lane, Matlock, DE4 3AR

T: 0114 268 3241
T: 01433 650009
T: 01629 815307
T: 01629 828250

E: bannercross@saxtonmee.co.uk
E: hathersage@saxtonmee.co.uk
E: bakewell@saxtonmee.co.uk
E: matlock@saxtonmee.co.uk