



3 Heathcote House Tapton Lock Hill, Chesterfield S41 7GE

Saxton Mee

Lettings

3 Heathcote House Tapton

Per Calendar Month

£900 Per Calendar

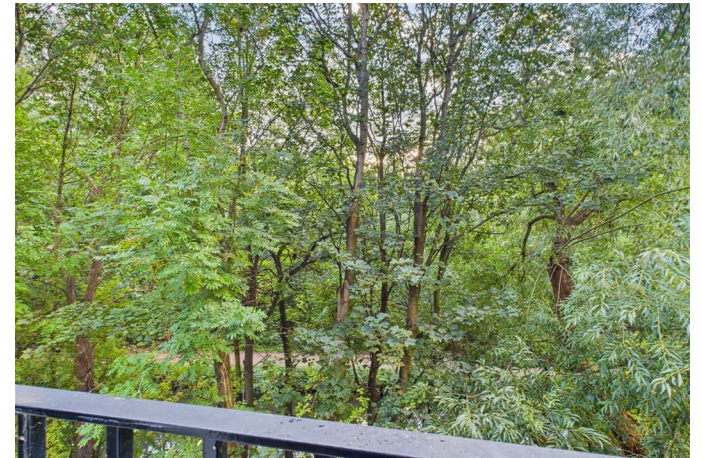
This superb first floor apartment offers two generous double bedrooms and a dedicated off road parking space within a sought after gated development beside the canal.

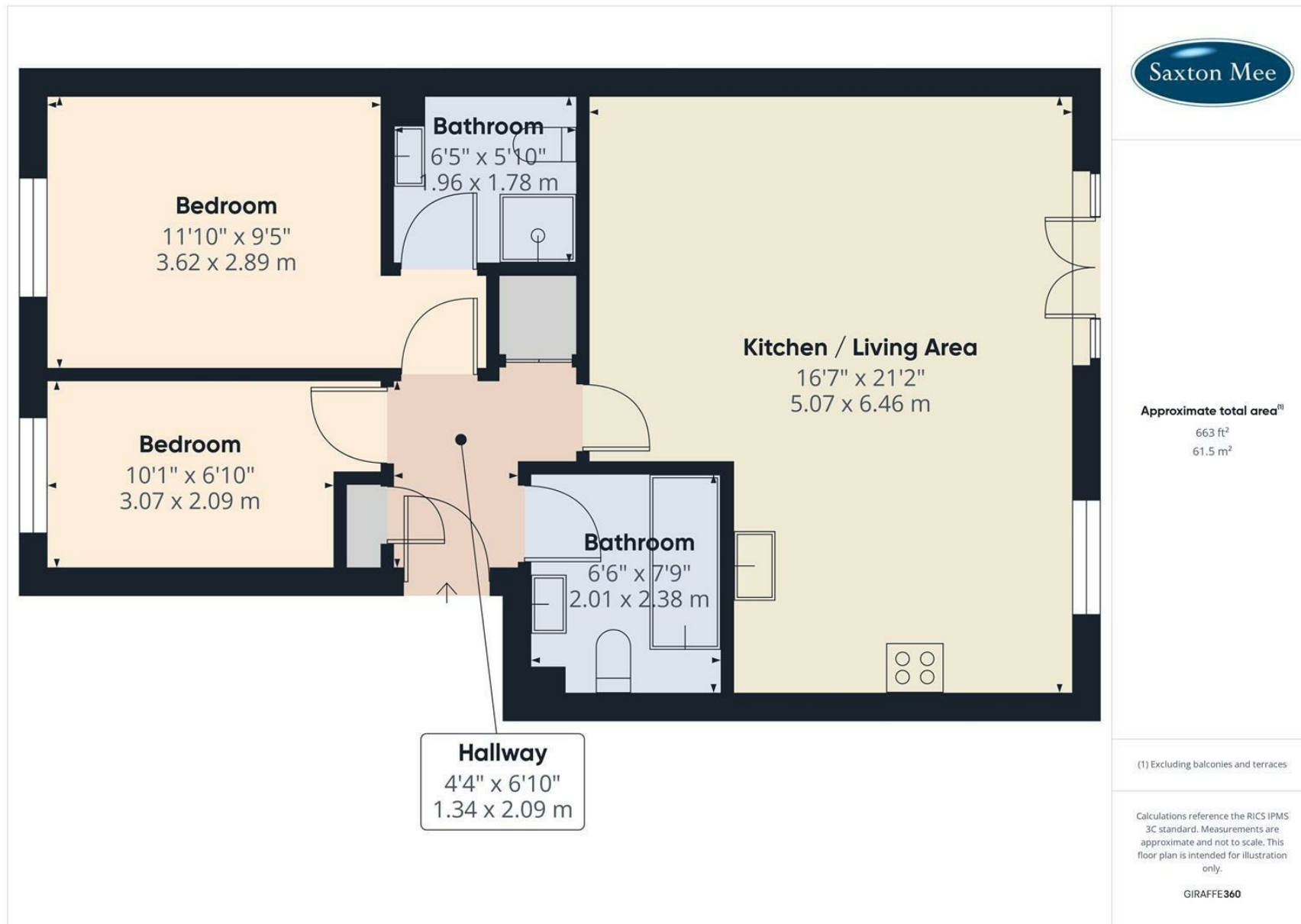
Finished in a neutral décor throughout, the accommodation includes: a welcoming communal entrance, private hallway with security intercom, an impressive open plan living area with Juliette balcony, and a contemporary fitted kitchen with appliances. The master bedroom features an en suite shower room, complemented by a second double bedroom and a modern bathroom. Secure gated parking is also provided.

Ideally positioned close to supermarkets, local shops, Tapton Lock, excellent bus services and major commuter routes.

The property is offered furnished and presented to a high standard, with restrictions of no smokers or pets. It holds an Energy Efficiency Rating of C. Council Tax Band B.







While we endeavour to make our sales particulars fair, accurate and reliable, they are only a general guide to the property and, accordingly, if there is any point, which is of particular importance to you, please contact the relevant office. The Agents have not tested any apparatus, equipment, fittings or services and so cannot verify they are in working order. The buyer is advised to obtain verification. Please note all the measurement details are approximate and should not be relied upon as exact. All plans, floor plans and maps are for guidance purposes only and are not to scale. Under no circumstances should they be relied upon as exact or for use in planning carpets and other such fixtures, fittings or furnishings. YOUR HOME IS AT RISK IF YOU DO NOT KEEP UP REPAYMENTS ON A MORTGAGE OR OTHER LOAN SECURED ON IT. 'A Life Assurance policy may be requested.' 'Written Quotations of credit terms available on request.'

Banner Cross
T: 0114 268 3241
E: bannercross@saxtonmee.co.uk
www.saxtonmee.co.uk

Hathersage
T: 01433 650009
E: hathersage@saxtonmee.co.uk

Bakewell
T: 01629 815307
E: bakewell@saxtonmee.co.uk

Matlock
T: 01629 828250
E: matlock@saxtonmee.co.uk