



155 Sharrow Vale Road, Sharrowvale, S11 8ZA

Saxton Mee

Lettings



# 155 Sharrow Vale Road

## Sharrowvale

Per Calendar Month

# £1,400 Per Calendar

This deceptively spacious three double bedroom villa style mid-terraced home is perfectly positioned in the highly desirable and sought after residential suburb of Sharrowvale, a location well known for its vibrant community, excellent local amenities, and easy access to the city centre. Arranged over three well proportioned floors, the property combines generous room sizes with a versatile layout, making it ideal for a variety of lifestyles.

The ground floor opens with a welcoming entrance hall which leads to a bright and comfortable front lounge, a modern rear kitchen with plenty of storage and preparation space, and a well sized dining room. Basement storage Cellar .Moving to the first floor, there are two further spacious double bedrooms, a stylish main bathroom featuring a large shower enclosure, and a separate shower room with a full suite, offering practicality and convenience for multiple occupants.

On the top floor is an exceptionally large attic bedroom, providing ample space not only for a comfortable sleeping area. Outside, the property enjoys a low-maintenance rear garden, perfect for relaxing or entertaining with minimal upkeep. Permit parking is also available through Sheffield City Council.

The property is offered unfurnished and presented to a high standard, with restrictions of no smokers or pets. It holds an Energy Efficiency Rating of E. Council Tax Band B. This is a rare opportunity to secure a spacious and versatile home in one of Sheffield's most sought-after neighbourhoods.



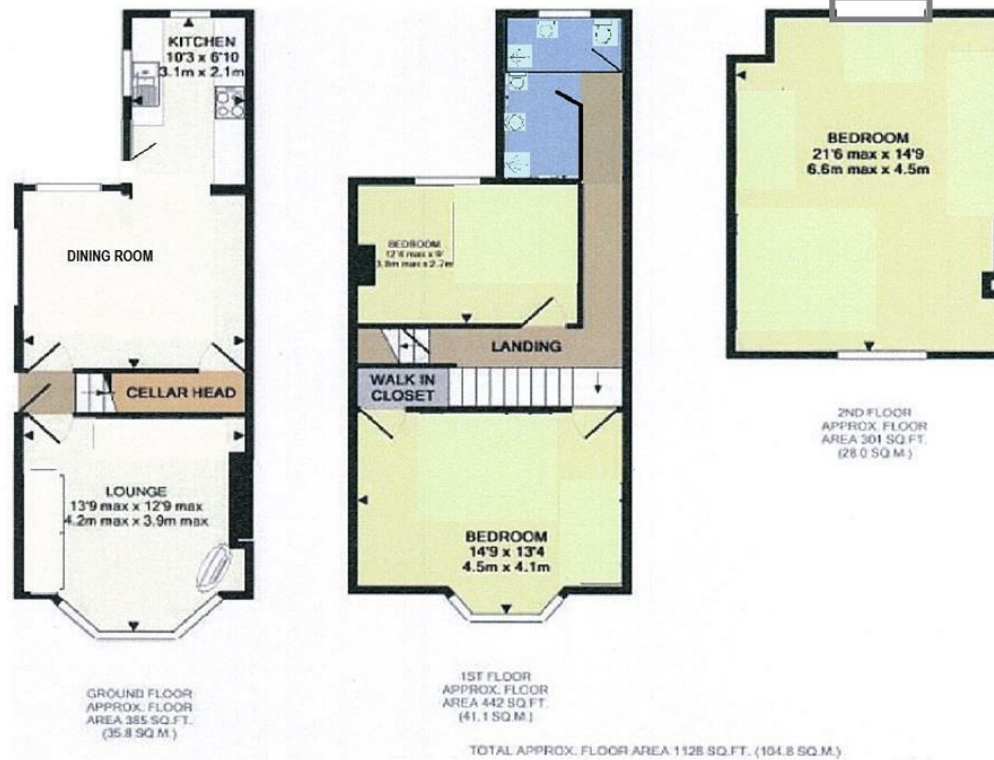
- Four Double Bedrooms
- Unurnished
- Sought After Location
- Deceptively Spacious
- Available Immediately
- Close to public transport
- Council Tax Band - B
- Energy Efficiency Rating- E





## 155 Sharrow Vale Road

Floor Plan



Not to scale – for illustration purposes only

While we endeavour to make our sales particulars fair, accurate and reliable, they are only a general guide to the property and, accordingly, if there is any point, which is of particular importance to you, please contact the relevant office. The Agents have not tested any apparatus, equipment, fittings or services and so cannot verify they are in working order. The buyer is advised to obtain verification. Please note all the measurement details are approximate and should not be relied upon as exact. All plans, floor plans and maps are for guidance purposes only and are not to scale. Under no circumstances should they be relied upon as exact or for use in planning carpets and other such fixtures, fittings or furnishings. YOUR HOME IS AT RISK IF YOU DO NOT KEEP UP REPAYMENTS ON A MORTGAGE OR OTHER LOAN SECURED ON IT. 'A Life Assurance policy may be requested.' 'Written Quotations of credit terms available on request.'

Banner Cross  
T: 0114 268 3241  
E: [bannercross@saxtonmee.co.uk](mailto:bannercross@saxtonmee.co.uk)  
[www.saxtonmee.co.uk](http://www.saxtonmee.co.uk)

Hathersage  
T: 01433 650009  
E: [hathersage@saxtonmee.co.uk](mailto:hathersage@saxtonmee.co.uk)

Bakewell  
T: 01629 815307  
E: [bakewell@saxtonmee.co.uk](mailto:bakewell@saxtonmee.co.uk)

Matlock  
T: 01629 828250  
E: [matlock@saxtonmee.co.uk](mailto:matlock@saxtonmee.co.uk)