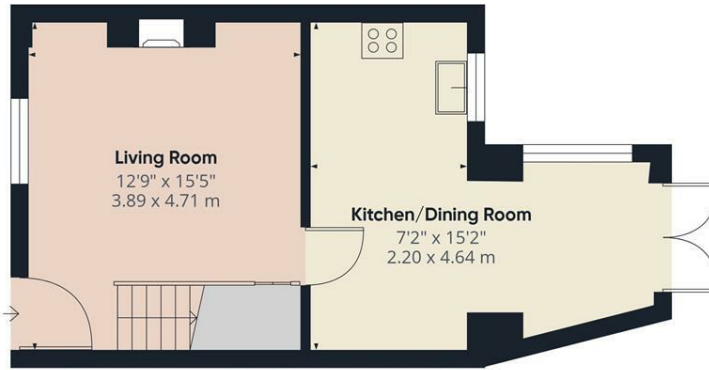




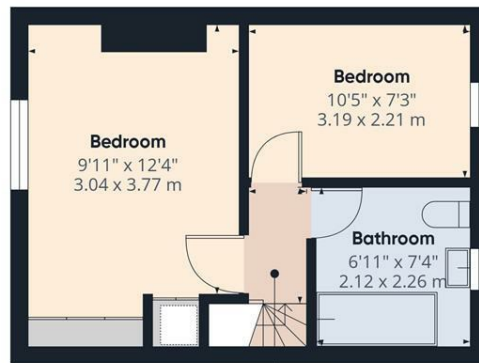
Rosemary Cottage 20 Fennel Street, Bakewell DE45 1QF **£1,250 Per Calendar Month**

This quaint and characterful two bedroom cottage nestles in the ever popular village of Ashford in the Water in the Peak District. With its` close proximity to Sheffield, Chesterfield and nearby Bakewell and Buxton the property comes ideal for a single professional or couple. Internally comprising living room with log burner, large kitchen, dining room with patio doors onto rear garden. First floor; Double bedroom one, second bedroom, modern bathroom suite. Outside is a low maintenance rear yard with plenty of room for alfresco dining and BBQ`s etc.

UNFURNISHED, 6-12 MONTH TENANCY. Restrictions - No smokers, pets or sharers. Energy Efficiency Rating D. Council Tax Band C



Ground Floor



Floor 1

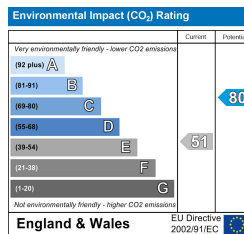
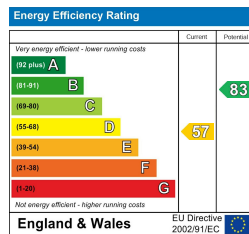
Saxton Mee

Approximate total area[®]
641 ft²
59.5 m²

(1) Excluding balconies and terraces

Calculations reference the RICS IPMS 3C standard. Measurements are approximate and not to scale. This floor plan is intended for illustration only.

GIRAFFE360



Banner Cross
Hathersage
Bakewell
Matlock
www.saxtonmee.co.uk

949-951 Ecclesall Road, Sheffield S11 8TN
3 Bank View, Main Road, Hathersage S32 1BB
Matlock Street, Bakewell DE45 1EE
27 Causeway Lane, Matlock, DE4 3AR

T: 0114 268 3241
T: 01433 650009
T: 01629 815307
T: 01629 828250

E: bannercross@saxtonmee.co.uk
E: hathersage@saxtonmee.co.uk
E: bakewell@saxtonmee.co.uk
E: matlock@saxtonmee.co.uk