



1 Crow Lane, Unstone, Dronfield S18 4AN

Saxton Mee

Lettings



# 1 Crow Lane

## Unstone

Per Calendar Month

# £2,000 Per Calendar

We are delighted to present this beautifully renovated five bedroom, two bathroom detached home, finished to an exceptional standard throughout. Located in the desirable area of Unstone, close to Dronfield, the property benefits from excellent transport links and easy access to local amenities.

Upon entering, you are welcomed by a spacious entrance hallway that leads into a large open plan lounge, dining area, and modern fitted kitchen. This impressive living space flows seamlessly into a bright and airy conservatory, creating the perfect setting for both relaxing and entertaining.

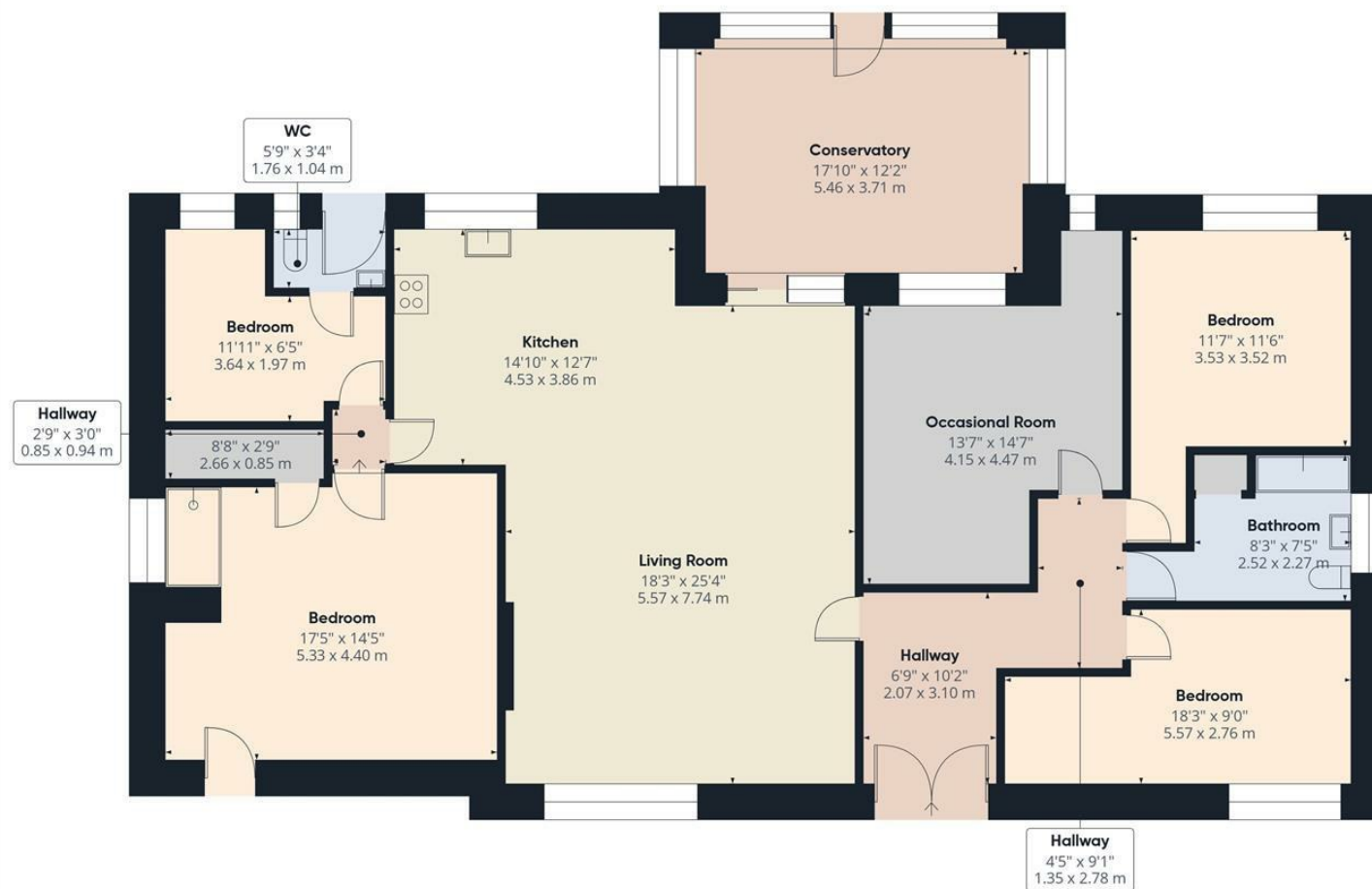
The property offers a generously sized master double bedroom complete with its own en-suite shower. There are a further four double bedrooms, each offering ample space and natural light. The stylish family bathroom is fitted with a contemporary three piece white suite.

Externally, the home boasts a large driveway providing parking for multiple vehicles, along with a private rear garden—ideal for outdoor gatherings or quiet enjoyment.

This property is offered on an unfurnished basis with a 12 month tenancy agreement. Please note, smoking is not permitted. The property has an Energy Efficiency Rating of E and falls within Council Tax Band F







**Approximate total area<sup>(1)</sup>**  
1873 ft<sup>2</sup>  
174 m<sup>2</sup>

(1) Excluding balconies and terraces

Calculations reference the RICS IPMS 3C standard. Measurements are approximate and not to scale. This floor plan is intended for illustration only.

GIRAFFE360

While we endeavour to make our sales particulars fair, accurate and reliable, they are only a general guide to the property and, accordingly, if there is any point, which is of particular importance to you, please contact the relevant office. The Agents have not tested any apparatus, equipment, fittings or services and so cannot verify they are in working order. The buyer is advised to obtain verification. Please note all the measurement details are approximate and should not be relied upon as exact. All plans, floor plans and maps are for guidance purposes only and are not to scale. Under no circumstances should they be relied upon as exact or for use in planning carpets and other such fixtures, fittings or furnishings. YOUR HOME IS AT RISK IF YOU DO NOT KEEP UP REPAYMENTS ON A MORTGAGE OR OTHER LOAN SECURED ON IT. 'A Life Assurance policy may be requested.' 'Written Quotations of credit terms available on request.'

**Banner Cross**  
T: 0114 268 3241  
E: [bannercross@saxtonmee.co.uk](mailto:bannercross@saxtonmee.co.uk)  
[www.saxtonmee.co.uk](http://www.saxtonmee.co.uk)

**Hathersage**  
T: 01433 650009  
E: [hathersage@saxtonmee.co.uk](mailto:hathersage@saxtonmee.co.uk)

**Bakewell**  
T: 01629 815307  
E: [bakewell@saxtonmee.co.uk](mailto:bakewell@saxtonmee.co.uk)

**Matlock**  
T: 01629 828250  
E: [matlock@saxtonmee.co.uk](mailto:matlock@saxtonmee.co.uk)