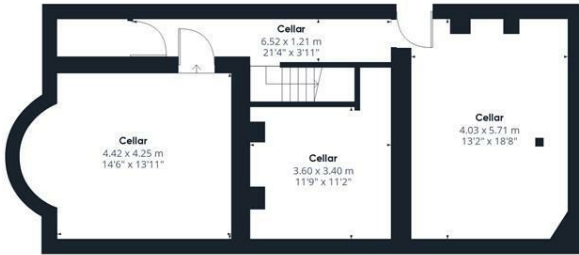


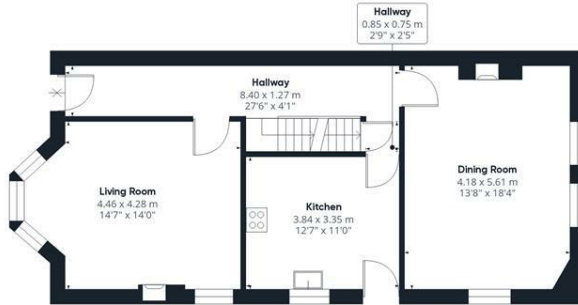


20 Newbould Lane, Sheffield S10 2PL £1,400 Per Calendar Month

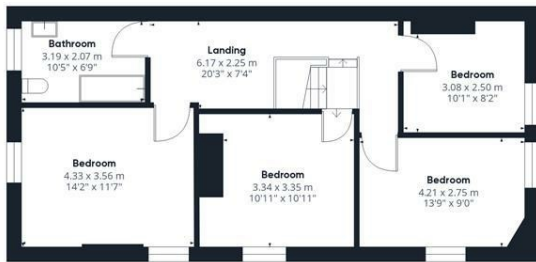
To let is this deceptively spacious 4 double bedroom semi detached home benefiting from off road parking for 1 car to the rear. Situated in this fashionable residential neighbourhood ideally placed for Sheffield city centre, university and hospitals, bus services and local shops. The accommodation on offer comprises: Ground floor: entrance hall with access to cellars for storage, front sitting room with feature fireplace and Living Flame gas fire, dining room with marble period fireplace, breakfast kitchen with built-in electric oven, gas hob, microwave, fridge freezer, dishwasher and washer dryer. 1st floor spacious landing area: 4 double bedrooms with period fireplaces and family bathroom with white suite and shower over the bath. Outside: lawned garden to the front, side patio area, There is no garage. The open space at the side of the garage is for two cars. UNFURNISHED. 6-12 MONTH TENANCY. Restrictions: No smokers, pets by negotiation. Energy Efficiency Rating E. Council Tax Band E



Floor -1



Floor 0



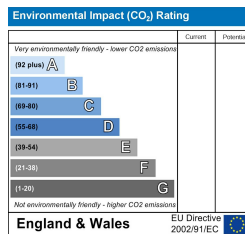
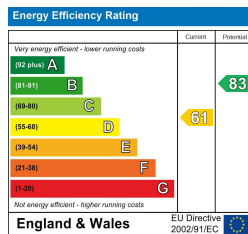
Floor 1

Approximate total area[®]
207.93 m²
2238.15 ft²

(1) Excluding balconies and terraces

While every attempt has been made to ensure accuracy, all measurements are approximate, not to scale. This floor plan is for illustrative purposes only.

GIRAFFE 360



Banner Cross
Hathersage
Bakewell
Matlock
www.saxtonmee.co.uk

949-951 Ecclesall Road, Sheffield S11 8TN
3 Bank View, Main Road, Hathersage S32 1BB
Matlock Street, Bakewell DE45 1EE
27 Causeway Lane, Matlock, DE4 3AR

T: 0114 268 3241
T: 01433 650009
T: 01629 815307
T: 01629 828250

E: bannercross@saxtonmee.co.uk
E: hathersage@saxtonmee.co.uk
E: bakewell@saxtonmee.co.uk
E: matlock@saxtonmee.co.uk