



1 The Old Court House St. Marys Gate, Chesterfield S41 7TH

Saxton Mee

Lettings

1 The Old Court House St.

Per Calendar Month

£650 Per Calendar

Located in this exclusive development is this luxury ground floor one bedroom apartment fitted out to an exceedingly high standard.

The Old Courthouse is fortunate to be in the superb location of Chesterfield Town Centre, being only a 10 minute drive to the M1, as well as only a short walk many local amenities including shops and restaurants.

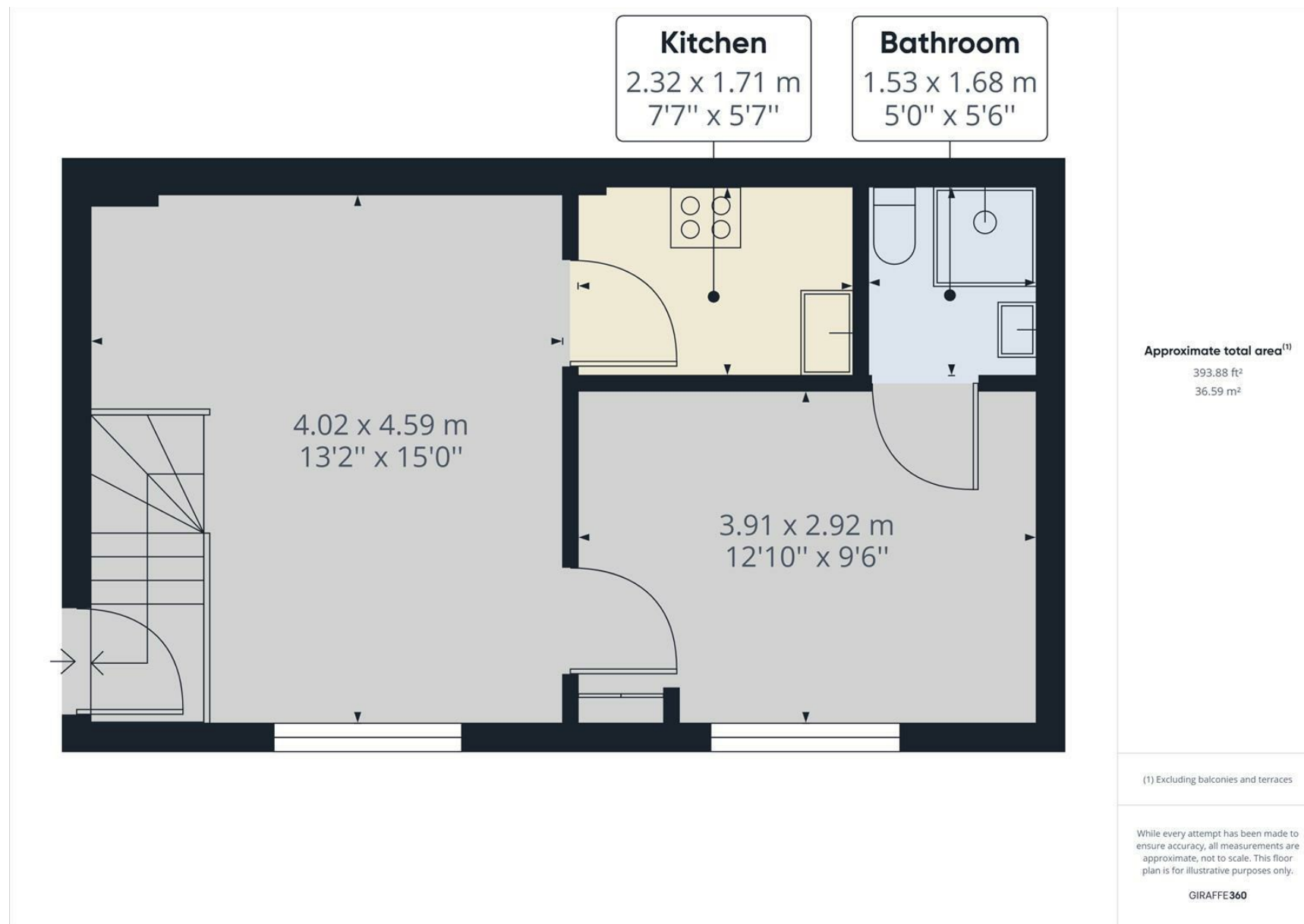
The property briefly comprises of: Communal entrance hall, staircase down to lounge, seperate bespoke kitchen with granite worktop and range of integrated appliances, master double bedroom and luxury shower room. The property benefits from one allocated parking space.

UNFURNISHED 6-12 MONTH TENANCY. Restrictions: No smokers, no pets. Energy Efficiency Rating C. Council tax band A

- Luxury Development
- Great Central Location
- High Spec Finish
- Allocated Parking
- Set in the Heart of Chesterfield
- EPC Rating - Awaiting Information







While we endeavour to make our sales particulars fair, accurate and reliable, they are only a general guide to the property and, accordingly, if there is any point, which is of particular importance to you, please contact the relevant office. The Agents have not tested any apparatus, equipment, fittings or services and so cannot verify they are in working order. The buyer is advised to obtain verification. Please note all the measurement details are approximate and should not be relied upon as exact. All plans, floor plans and maps are for guidance purposes only and are not to scale. Under no circumstances should they be relied upon as exact or for use in planning carpets and other such fixtures, fittings or furnishings. YOUR HOME IS AT RISK IF YOU DO NOT KEEP UP REPAYMENTS ON A MORTGAGE OR OTHER LOAN SECURED ON IT. 'A Life Assurance policy may be requested.' 'Written Quotations of credit terms available on request.'

Banner Cross
T: 0114 268 3241
E: bannercross@saxtonmee.co.uk
www.saxtonmee.co.uk

Hathersage
T: 01433 650009
E: hathersage@saxtonmee.co.uk

Bakewell
T: 01629 815307
E: bakewell@saxtonmee.co.uk

Matlock
T: 01629 828250
E: matlock@saxtonmee.co.uk