



34 Leyfield Road, Sheffield S17 3EE

Saxton Mee

Lettings

34 Leyfield Road

Per Calendar Month

£1,400 Per Calendar

Located on the desirable Leyfield Road in the heart of Dore, Sheffield, this well presented three bedroom semi detached home offers an excellent opportunity for families and professionals seeking both comfort and convenience. Set on a quiet residential street, the property provides a generous amount of living space with well proportioned rooms and a practical layout designed for modern family life.

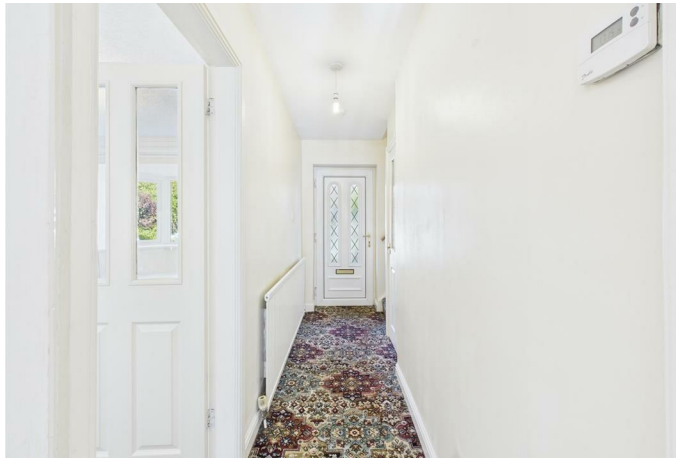
The home features a spacious living area, a spacious kitchen with ample storage, and three good-sized bedrooms that offer flexibility for family, guests, or home working. The bathroom is fitted with contemporary fixtures, ensuring comfort and functionality. Outside, you'll find a well maintained private garden ideal for relaxing or entertaining, along with off street parking via a private driveway.

The location is a key highlight, with excellent access to well regarded local schools, including King Egbert School. Dore & Totley train station is nearby, providing convenient links to Sheffield city centre and beyond, while a range of local amenities—cafés, shops, parks, and walking routes—are all within easy reach.

This is a fantastic opportunity to rent a well-located, spacious home in one of Sheffield's most sought-after suburbs, offering a peaceful lifestyle without compromising on connectivity or convenience.

Energy Efficiency Rating D | Council Tax Band D







Ground Floor



Floor 1

Approximate total area^m

993 ft²
92.3 m²

(1) Excluding balconies and terraces.

While every attempt has been made to ensure accuracy, all measurements are approximate, not to scale. This floor plan is for illustrative purposes only.

Calculations were based on RICS IPMS 3C standard. Please note that calculations were adjusted by a third party and therefore may not comply with RICS IPMS 3C.

GIRAFFE360

While we endeavour to make our sales particulars fair, accurate and reliable, they are only a general guide to the property and, accordingly, if there is any point, which is of particular importance to you, please contact the relevant office. The Agents have not tested any apparatus, equipment, fittings or services and so cannot verify they are in working order. The buyer is advised to obtain verification. Please note all the measurement details are approximate and should not be relied upon as exact. All plans, floor plans and maps are for guidance purposes only and are not to scale. Under no circumstances should they be relied upon as exact or for use in planning carpets and other such fixtures, fittings or furnishings. YOUR HOME IS AT RISK IF YOU DO NOT KEEP UP REPAYMENTS ON A MORTGAGE OR OTHER LOAN SECURED ON IT. 'A Life Assurance policy may be requested.' 'Written Quotations of credit terms available on request.'

Banner Cross
T: 0114 268 3241
E: bannercross@saxtonmee.co.uk
www.saxtonmee.co.uk

Hathersage
T: 01433 650009
E: hathersage@saxtonmee.co.uk

Bakewell
T: 01629 815307
E: bakewell@saxtonmee.co.uk

Matlock
T: 01629 828250
E: matlock@saxtonmee.co.uk



Lettings