



Apartment 7 106 Napier Street, Sheffield S11 8HA



Lettings

Apartment 7 106 Napier

Per Calendar Month

£1,250 Per Calendar

Located just a short walk from Sheffield city centre, this newly converted development presents a collection of exceptional two bedroom, two bathroom apartments, each completed to an outstanding specification. Designed with discerning residents in mind, every aspect of these residences reflects superior craftsmanship and contemporary elegance.

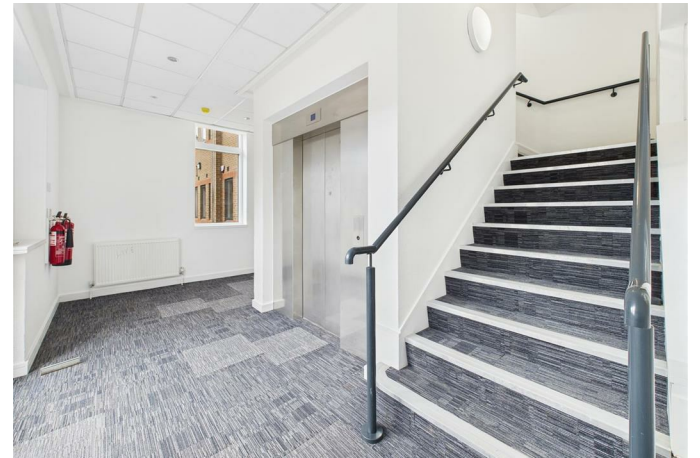
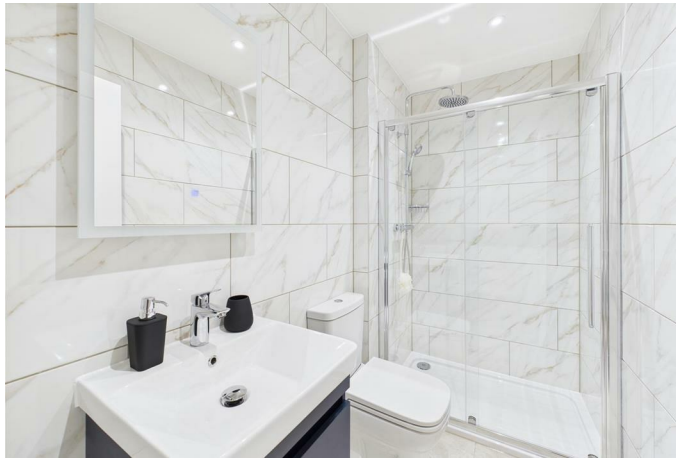
Each apartment features a bespoke imported German kitchen, complete with high end appliances and boiling water taps, seamlessly integrated into spacious open-plan living areas flooded with natural light from expansive windows. The king sized bedrooms offer generous proportions and are complemented by sleek, modern bathrooms, creating a private retreat of comfort and style.

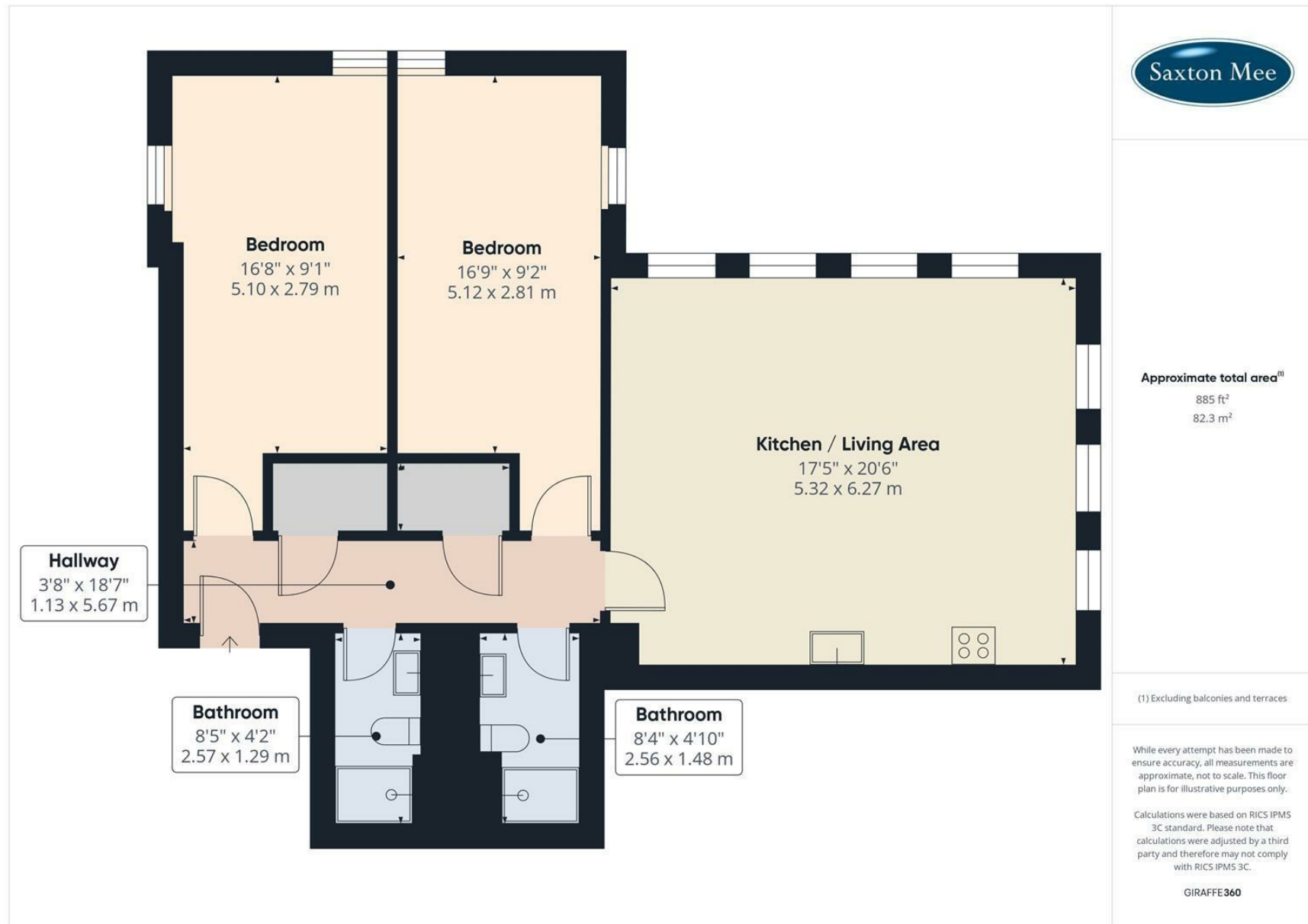
Additional features include allocated parking spaces and a prime location on Ecclesall Road—perfectly positioned for access to boutique shops, restaurants, and the city's vibrant cultural scene.

FURNISHINGS NEGOTIABLE Short term/long term tenancies.
Restrictions: No smokers. Energy Efficiency Rating - Awaiting.
Information Council Tax Band - Awaiting Information



- Brand new luxury conversion
- Two double bedrooms, two contemporary bathrooms
- Bespoke German kitchens with boiling water taps
- Bright and spacious open-plan living areas
- King-sized bedrooms with stunning bathrooms
- Allocated parking
- Prime Ecclesall Road location, walking distance to the city centre





While we endeavour to make our sales particulars fair, accurate and reliable, they are only a general guide to the property and, accordingly, if there is any point, which is of particular importance to you, please contact the relevant office. The Agents have not tested any apparatus, equipment, fittings or services and so cannot verify they are in working order. The buyer is advised to obtain verification. Please note all the measurement details are approximate and should not be relied upon as exact. All plans, floor plans and maps are for guidance purposes only and are not to scale. Under no circumstances should they be relied upon as exact or for use in planning carpets and other such fixtures, fittings or furnishings. YOUR HOME IS AT RISK IF YOU DO NOT KEEP UP REPAYMENTS ON A MORTGAGE OR OTHER LOAN SECURED ON IT. 'A Life Assurance policy may be requested.' 'Written Quotations of credit terms available on request.'

Banner Cross
T: 0114 268 3241
E: bannercross@saxtonmee.co.uk
www.saxtonmee.co.uk

Hathersage
T: 01433 650009
E: hathersage@saxtonmee.co.uk

Bakewell
T: 01629 815307
E: bakewell@saxtonmee.co.uk

Matlock
T: 01629 828250
E: matlock@saxtonmee.co.uk