



Apt 27 Ladybower Lodge Ashopton Road, Hope Valley S33 0BY **£1,200 Per Calendar Month**

Offered for rent is this spacious apartment in a spectacular setting, featuring three double bedrooms and three bath/shower rooms, is set in a historic property that was once the original pump house for Ladybower Dam. The apartment boasts modern conveniences such as electric heating, double glazing, and two designated parking spaces, along with full access to the on-site gymnasium. Direct access to many local walks and a wealth of outdoor pursuits.

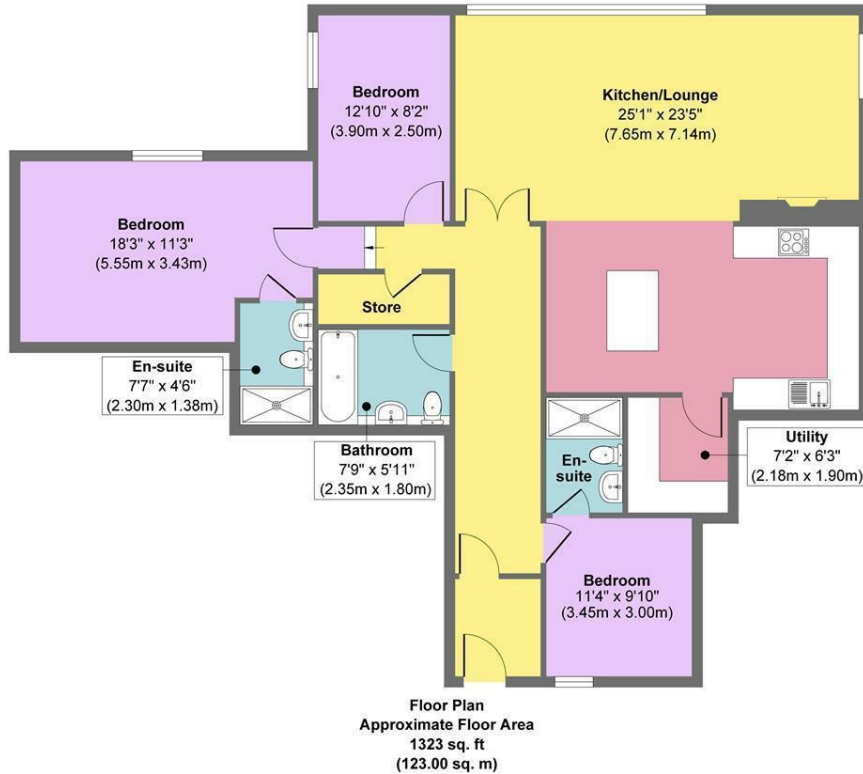
There is a long entrance hall leads to a spacious and stunning open-plan living room, complemented by an adjacent dining area and a superb breakfast kitchen offering a range of units and integrated appliances. Additional practical spaces include a utility room.

The master bedroom features an en-suite shower room, while the second double bedroom also has an en-suite shower room. A third double bedroom and a main bathroom complete the interior accommodations.

The property benefits from well-maintained communal grounds, secure storage, and a bike area, enhancing both convenience and lifestyle for residents.

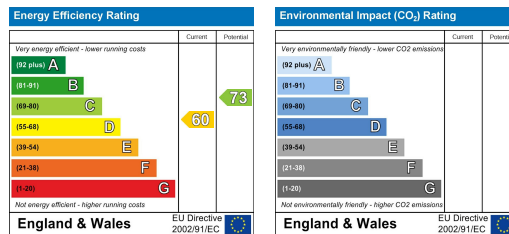
UNFURNISHED. RESTRICTIONS; No smokers, COUNCIL TAX BAND F. Energy Efficiency Rating D

27 Ladybower Lodge



Approx. Gross Internal Floor Area 1323 sq. ft / 123.00 sq. m

Illustration for identification purposes only, measurements are approximate, not to scale.
Produced by Elements Property



Banner Cross
Hathersage
Bakewell
Matlock
www.saxtonmee.co.uk

949-951 Ecclesall Road, Sheffield S11 8TN
3 Bank View, Main Road, Hathersage S32 1BB
Matlock Street, Bakewell DE45 1EE
27 Causeway Lane, Matlock, DE4 3AR

T: 0114 268 3241
T: 01433 650009
T: 01629 815307
T: 01629 828250

E: bannercross@saxtonmee.co.uk
E: hathersage@saxtonmee.co.uk
E: bakewell@saxtonmee.co.uk
E: matlock@saxtonmee.co.uk