



2 Parkfield Place, Highfield, Sheffield S2 4TH

Saxton Mee

Lettings



## 2 Parkfield Place

### Highfield

Per Calendar Month

## £950 Per Calendar

Situated in this very popular location of Highfield, a three-bedroom end terrace house is for rent and benefits from an enclosed rear garden. Ideally suited the property briefly comprises of an attractive living room, a good-sized dining kitchen with a well fitted kitchen area and a range of appliances. On the first floor, there is a large principal double bedroom, a good-sized second bedroom, and a bathroom with a full suite. The attic provides an additional spacious double bedroom.

Highfield is a lively and diverse neighborhood situated just south of Sheffield city center, within the S2 postcode area. Known for its rich cultural heritage and strong sense of community, it offers an excellent balance of urban convenience and local charm.

Permit on street parking available

UNFURNISHED Restrictions - No smokers. Energy Efficiency Rating E Council Tax Band A

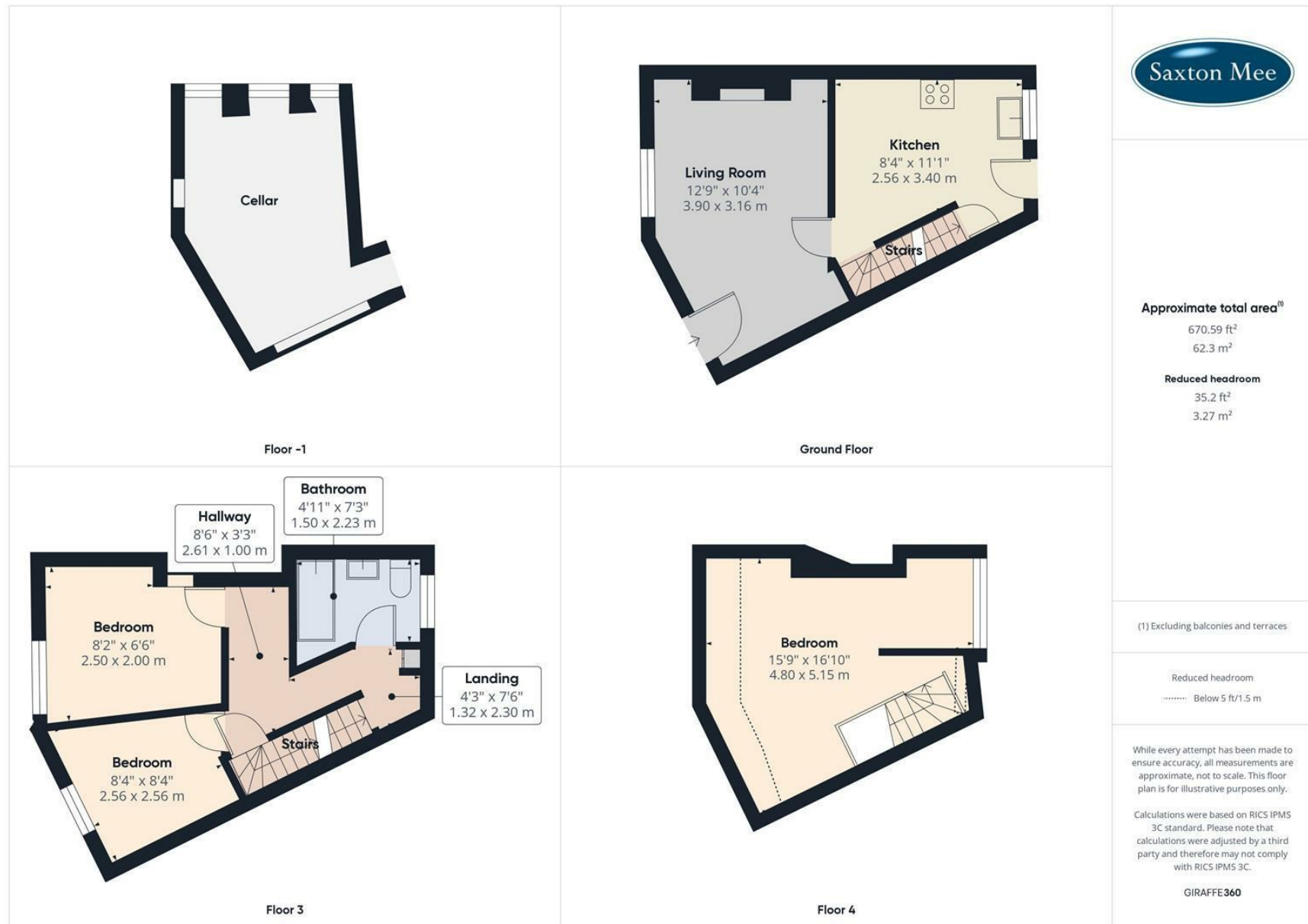


- Three-bedroom end terrace house
- Situated in this very popular location of Highfield
- Enclosed rear garden
- Well fitted kitchen area
- Highfield is a lively and diverse neighborhood situated just south of Sheffield city center
- Council Tax Band: A
- EPC Rating: E









While we endeavour to make our sales particulars fair, accurate and reliable, they are only a general guide to the property and, accordingly, if there is any point, which is of particular importance to you, please contact the relevant office. The Agents have not tested any apparatus, equipment, fittings or services and so cannot verify they are in working order. The buyer is advised to obtain verification. Please note all the measurement details are approximate and should not be relied upon as exact. All plans, floor plans and maps are for guidance purposes only and are not to scale. Under no circumstances should they be relied upon as exact or for use in planning carpets and other such fixtures, fittings or furnishings. YOUR HOME IS AT RISK IF YOU DO NOT KEEP UP REPAYMENTS ON A MORTGAGE OR OTHER LOAN SECURED ON IT. 'A Life Assurance policy may be requested.' 'Written Quotations of credit terms available on request.'

Bannercross  
T: 0114 268 3241  
E: [bannercross@saxtonmee.co.uk](mailto:bannercross@saxtonmee.co.uk)  
[www.saxtonmee.co.uk](http://www.saxtonmee.co.uk)

Hathersage  
T: 01433 650009  
E: [hathersage@saxtonmee.co.uk](mailto:hathersage@saxtonmee.co.uk)

Bakewell  
T: 01629 815307  
E: [bakewell@saxtonmee.co.uk](mailto:bakewell@saxtonmee.co.uk)

Matlock  
T: 01629 828250  
E: [matlock@saxtonmee.co.uk](mailto:matlock@saxtonmee.co.uk)