



295a Middlewood Road, Sheffield S6 1TG



Lettings

# 295a Middlewood Road

Per Calendar Month

## £625 Per Calendar

Viewing is essential to appreciate this extremely spacious duplex apartment. Ideal for the professional couple, just a short walk from local amenities and on the tram route into town.

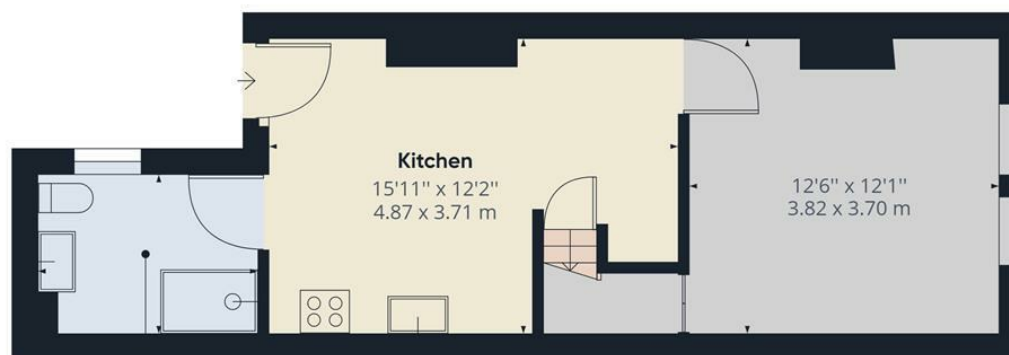
The property briefly comprises of: external staircase leading to first floor, open plan kitchen/dining area, lounge and shower room, Spacious attic double bedroom. Outside; yard area to rear.

PART FURNISHED 6 or 12 MONTH TENANCY.  
Restrictions: No smokers or pets . Energy  
Efficiency Rating E. Council Tax Band A

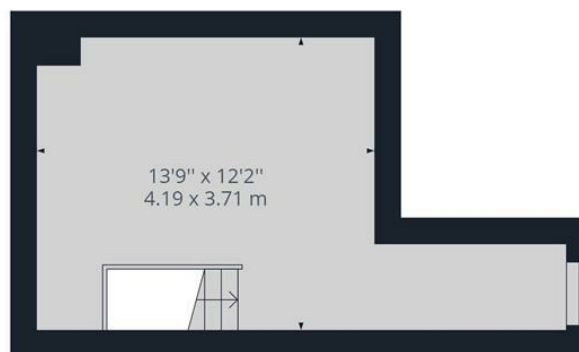








Floor 0



Floor 1

**Approximate total area<sup>(1)</sup>**

583.86 ft<sup>2</sup>  
54.24 m<sup>2</sup>

(1) Excluding balconies and terraces

While every attempt has been made to ensure accuracy, all measurements are approximate, not to scale. This floor plan is for illustrative purposes only.

GIRAFFE360

While we endeavour to make our sales particulars fair, accurate and reliable, they are only a general guide to the property and, accordingly, if there is any point, which is of particular importance to you, please contact the relevant office. The Agents have not tested any apparatus, equipment, fittings or services and so cannot verify they are in working order. The buyer is advised to obtain verification. Please note all the measurement details are approximate and should not be relied upon as exact. All plans, floor plans and maps are for guidance purposes only and are not to scale. Under no circumstances should they be relied upon as exact or for use in planning carpets and other such fixtures, fittings or furnishings. YOUR HOME IS AT RISK IF YOU DO NOT KEEP UP REPAYMENTS ON A MORTGAGE OR OTHER LOAN SECURED ON IT. 'A Life Assurance policy may be requested.' 'Written Quotations of credit terms available on request.'

Banner Cross  
T: 0114 268 3241  
E: [bannercross@saxtonmee.co.uk](mailto:bannercross@saxtonmee.co.uk)  
[www.saxtonmee.co.uk](http://www.saxtonmee.co.uk)

Hathersage  
T: 01433 650009  
E: [hathersage@saxtonmee.co.uk](mailto:hathersage@saxtonmee.co.uk)

Bakewell  
T: 01629 815307  
E: [bakewell@saxtonmee.co.uk](mailto:bakewell@saxtonmee.co.uk)

Matlock  
T: 01629 828250  
E: [matlock@saxtonmee.co.uk](mailto:matlock@saxtonmee.co.uk)



Lettings