



Chapel Cottage The Causeway, Eyam S32 5QF £950 Per Calendar Month

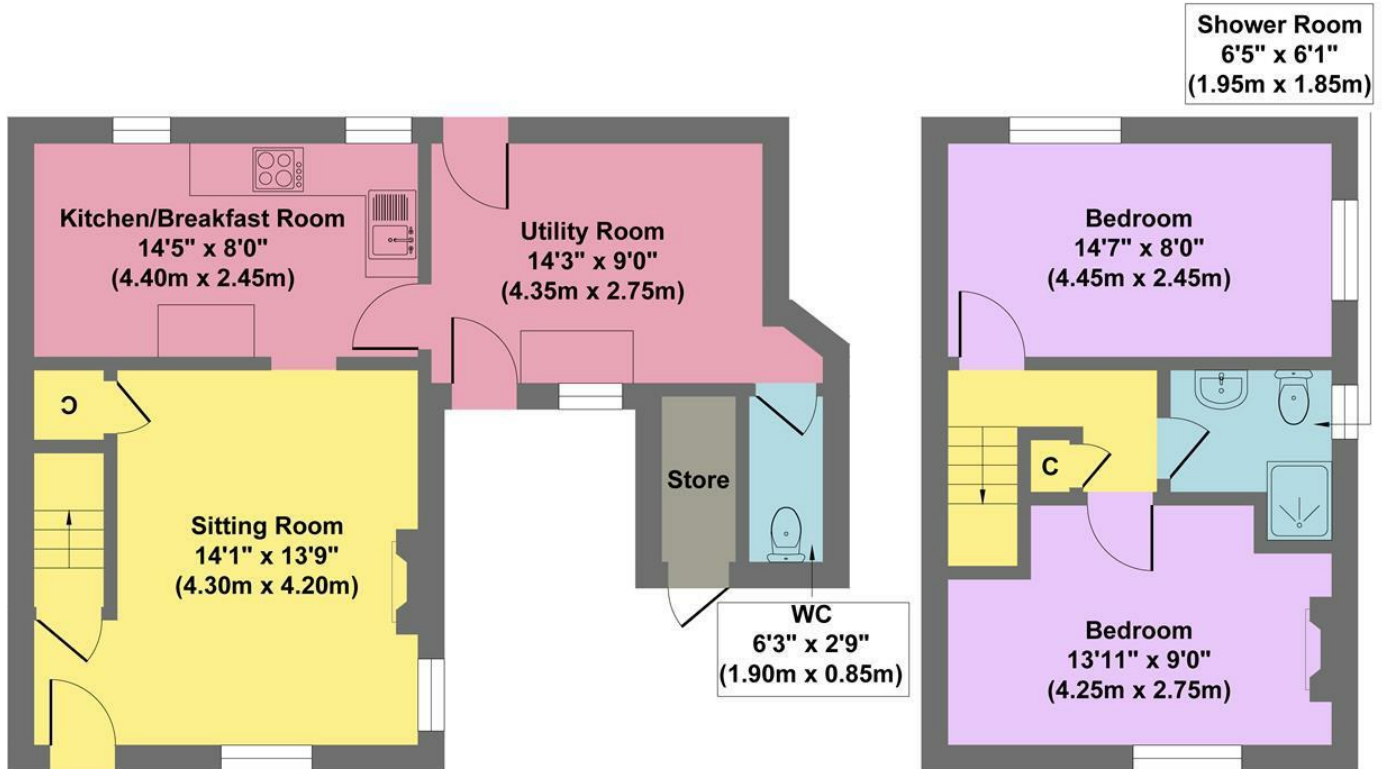
This delightful stone-built two-bedroom cottage, brimming with character, is set in the tranquil position in the historic village of Eyam in the heart of the Peak District. The cottage opens in to a spacious boot room/utility area, complete with a WC, perfect for country living.

A fitted breakfast kitchen leads to the sitting room with an attractive gritstone fireplace housing a multi-fuel stove.

Upstairs, the cottage features two generously sized double bedrooms and a shower room.

Outside, the property enjoys off-road parking for one vehicle, a rare find in such a historic village setting. The rear garden is an idyllic retreat, offering a seating terrace perfect for al fresco dining or enjoying the peaceful surroundings. The garden also boasts an apple tree and an adjoining croft, providing further space and opportunity for gardening or simply enjoying the outdoors. UNFURNISHED 6 - 12 MONTHS TENANCY. Restrictions: No smokers. Energy Efficiency Rating E. Council Tax Band C

Chapel Cottage

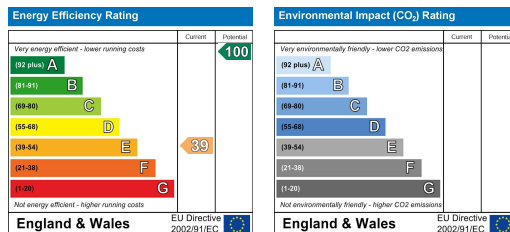


Ground Floor
Approximate Floor Area
488 sq.ft
(45.3 sq.m.)

First Floor
Approximate Floor Area
326 sq.ft
(30.3 sq.m.)

Approx. Gross Internal Floor Area 814 sq.ft / 75.6 sq.m

Illustration for identification purposes only, measurements are approximate, not to scale



Banner Cross
Hathersage
Bakewell
Matlock
www.saxtonmee.co.uk

949-951 Ecclesall Road, Sheffield S11 8TN
3 Bank View, Main Road, Hathersage S32 1BB
Matlock Street, Bakewell DE45 1EE
27 Causeway Lane, Matlock, DE4 3AR

T: 0114 268 3241
T: 01433 650009
T: 01629 815307
T: 01629 828250

E: bannercross@saxtonmee.co.uk
E: hathersage@saxtonmee.co.uk
E: bakewell@saxtonmee.co.uk
E: matlock@saxtonmee.co.uk