



2 St Annes, Saltergate Lane, Bamford, Hope Valley S33 0BE

Saxton Mee

Lettings



## 2 St Annes, Saltergate Lane

### Bamford

Per Calendar Month

## £1,500 Per Calendar

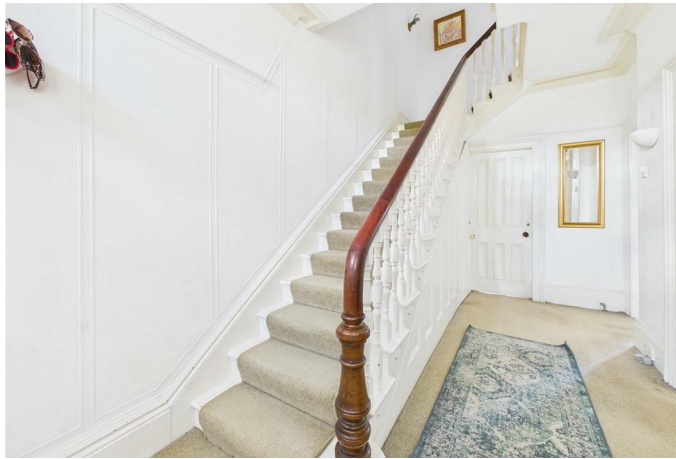
Delightfully situated with stunning views to the front over Sickleholme Golf Course and open countryside to the rear, is this stone built Victorian four bedroom semi detached home with garage. Bamford is a very popular and picturesque village within the Peak National Park with the train station close by and within easy commute to Sheffield, Chesterfield and other Peak District villages.

The charming accommodation comprising: large reception hall, bay windowed sitting room with fireplace and open fire, dining room with ornamental fireplace, fitted kitchen, and cellar. First floor: master bedroom, large double bedroom two, single bedroom and family bathroom with period suite. Second floor: further double bedroom. Outside: front and side lawned gardens, off road parking and access to a garage. To the rear, patio area, spectacular views to open countryside and extensive lawned garden.

UNFURNISHED MINIMUM 12 MONTH TENANCY. Restrictions: No smokers, Pets by negotiation. Energy Efficiency Rating E Council Tax Band E







While we endeavour to make our sales particulars fair, accurate and reliable, they are only a general guide to the property and, accordingly, if there is any point, which is of particular importance to you, please contact the relevant office. The Agents have not tested any apparatus, equipment, fittings or services and so cannot verify they are in working order. The buyer is advised to obtain verification. Please note all the measurement details are approximate and should not be relied upon as exact. All plans, floor plans and maps are for guidance purposes only and are not to scale. Under no circumstances should they be relied upon as exact or for use in planning carpets and other such fixtures, fittings or furnishings. YOUR HOME IS AT RISK IF YOU DO NOT KEEP UP REPAYMENTS ON A MORTGAGE OR OTHER LOAN SECURED ON IT. 'A Life Assurance policy may be requested.' 'Written Quotations of credit terms available on request.'

Banner Cross  
T: 0114 268 3241  
E: [bannercross@saxtonmee.co.uk](mailto:bannercross@saxtonmee.co.uk)  
[www.saxtonmee.co.uk](http://www.saxtonmee.co.uk)

Hathersage  
T: 01433 650009  
E: [hathersage@saxtonmee.co.uk](mailto:hathersage@saxtonmee.co.uk)

Bakewell  
T: 01629 815307  
E: [bakewell@saxtonmee.co.uk](mailto:bakewell@saxtonmee.co.uk)

Matlock  
T: 01629 828250  
E: [matlock@saxtonmee.co.uk](mailto:matlock@saxtonmee.co.uk)



Lettings