

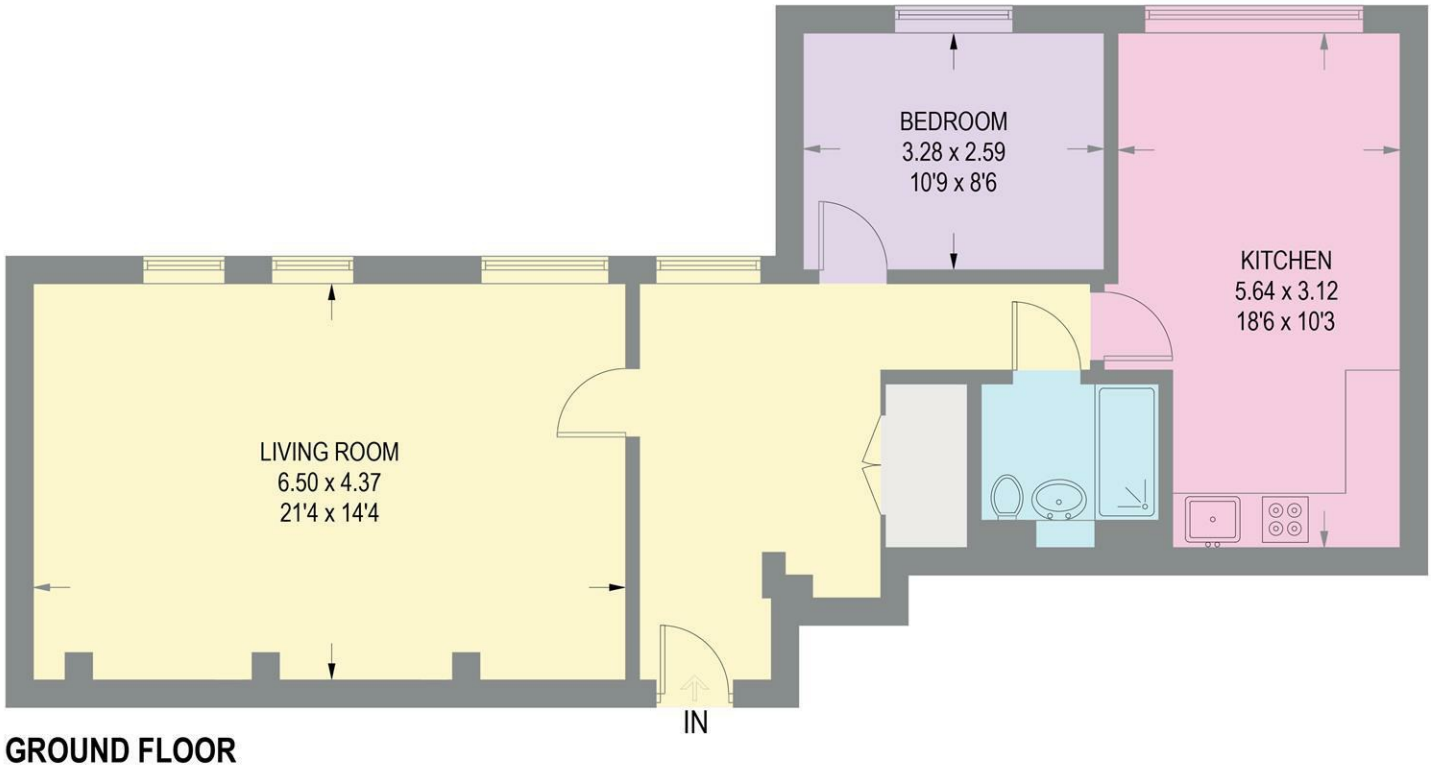


Apartment 5 Jet Centro, Sheffield S2 4AH **£800 Per Calendar Month**

A particularly spacious, one-bedroom ground floor apartment in a popular and convenient location and having one undercroft parking space. The property briefly comprises of secure entrance, private reception hall with good storage. Dining kitchen, the kitchen area well fitted out and with adjacent dining/sitting area. Master double bedroom and shower room with full suite. Large additional room, suitable as lounge/office and/or occasional second bedroom. Outside: Communal central courtyard area and private designated undercroft parking space. Within walking distance of Sheffield City Centre, rail and bus stations and great amenities and easy access to the motorway network. FURNISHING NEGOTIABLE. 6-12 MONTH TENANCY. Restrictions: No smokers or pets. Energy Efficiency Rating C. Council Tax Band C.

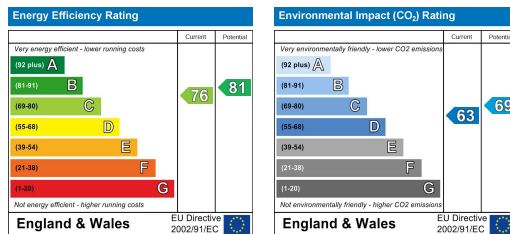
5 JET CENTRO

APPROXIMATE GROSS INTERNAL AREA = 74 SQ M / 796 SQ FT



GROUND FLOOR

Illustration for identification purposes only, measurements are approximate, not to scale.



Banner Cross
Hathersage
Bakewell
Matlock
www.saxtonmee.co.uk

949-951 Ecclesall Road, Sheffield S11 8TN
3 Bank View, Main Road, Hathersage S32 1BB
Matlock Street, Bakewell DE45 1EE
27 Causeway Lane, Matlock, DE4 3AR

T: 0114 268 3241
T: 01433 650009
T: 01629 815307
T: 01629 828250

E: bannercross@saxtonmee.co.uk
E: hathersage@saxtonmee.co.uk
E: bakewell@saxtonmee.co.uk
E: matlock@saxtonmee.co.uk