



386 Sharrow Vale Road, Sheffield S11 8ZP

Saxton Mee

Lettings



# 386 Sharrow Vale Road

Per Calendar Month

## £800 Per Calendar

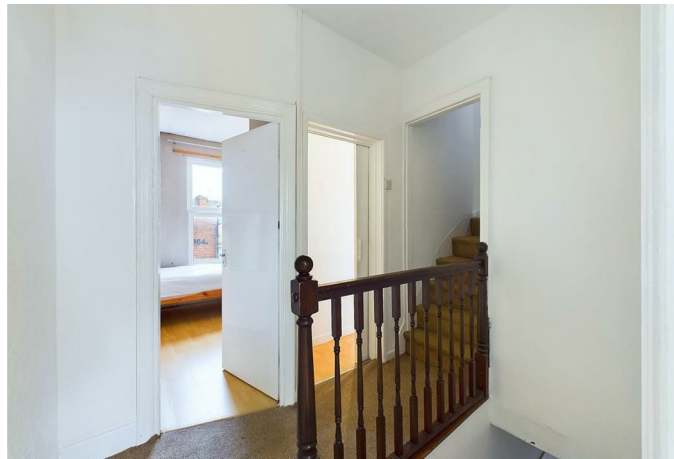
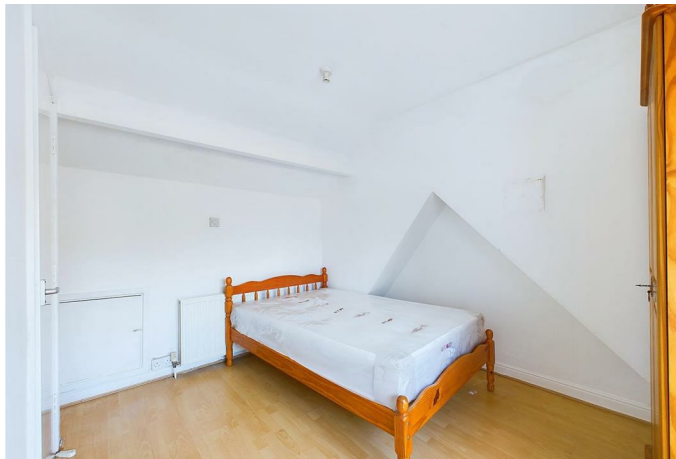
This stunning three bedroom mid terrace property is located in the popular area of Sharrow Vale; close to shops, restaurants and amenities, this property is ideal for a professional couple.

Benefiting from an off street parking space, this property briefly comprises of: A well sized living room with large windows, a kitchen diner to the rear with white goods included, a staircase down to the cellar. First floor: A double bedroom and a further single bedroom, a bathroom with a shower over bath. Attic double bedroom. Outside: rear parking area.

PART-FURNISHED. 6 MONTHS TENANCY ONLY.  
Restrictions: No smokers. Energy Efficiency Rating D. Council Tax Band A









While we endeavour to make our sales particulars fair, accurate and reliable, they are only a general guide to the property and, accordingly, if there is any point, which is of particular importance to you, please contact the relevant office. The Agents have not tested any apparatus, equipment, fittings or services and so cannot verify they are in working order. The buyer is advised to obtain verification. Please note all the measurement details are approximate and should not be relied upon as exact. All plans, floor plans and maps are for guidance purposes only and are not to scale. Under no circumstances should they be relied upon as exact or for use in planning carpets and other such fixtures, fittings or furnishings. YOUR HOME IS AT RISK IF YOU DO NOT KEEP UP REPAYMENTS ON A MORTGAGE OR OTHER LOAN SECURED ON IT. 'A Life Assurance policy may be requested.' 'Written Quotations of credit terms available on request.'

Banner Cross  
T: 0114 268 3241  
E: [bannercross@saxtonmee.co.uk](mailto:bannercross@saxtonmee.co.uk)  
[www.saxtonmee.co.uk](http://www.saxtonmee.co.uk)

Hathersage  
T: 01433 650009  
E: [hathersage@saxtonmee.co.uk](mailto:hathersage@saxtonmee.co.uk)

Bakewell  
T: 01629 815307  
E: [bakewell@saxtonmee.co.uk](mailto:bakewell@saxtonmee.co.uk)

Matlock  
T: 01629 828250  
E: [matlock@saxtonmee.co.uk](mailto:matlock@saxtonmee.co.uk)