



Apt 205 West One Tower 7 Cavendish Street, Sheffield S3 7SH

Saxton Mee

Lettings

# Apt 205 West One Tower 7

Per Calendar Month

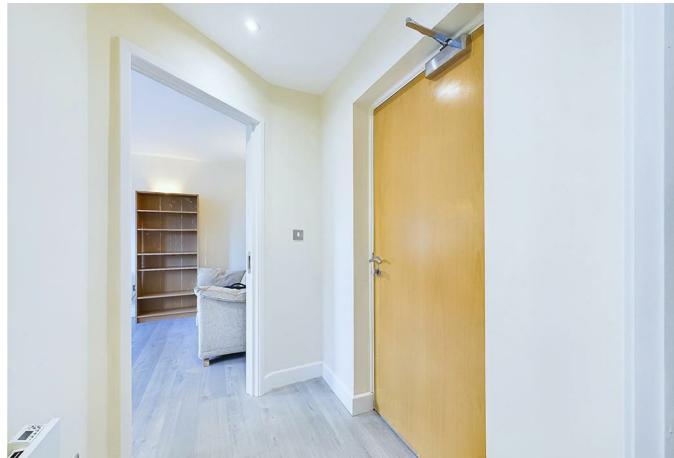
## £795 Per Calendar

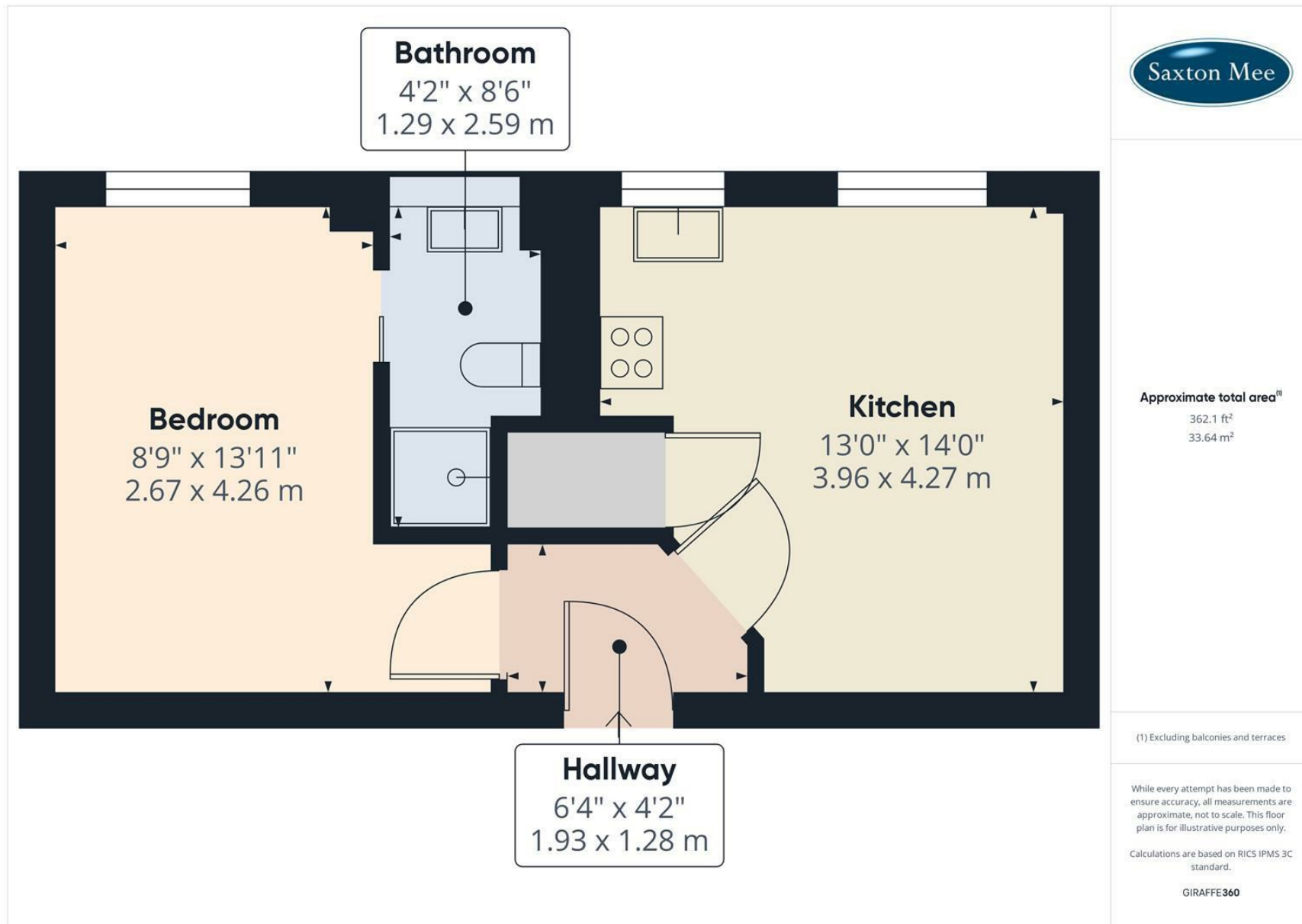
Available to let is this one bed apartment in the highly sought after development at West One in the heart of Sheffield City Centre.

Located close to the cities hospitals, universities and nightlife the accommodation comprises; double bedroom with views over city and sliding door to bathroom with toilet, sink and shower cubicle, open plan kitchen/living area with washer, fridge freezer and electric oven and hob. Electric heating throughout.

FURNISHED 6-12 MONTH TENANCY No smokers.  
EPC Rating C Council Tax Band B







While we endeavour to make our sales particulars fair, accurate and reliable, they are only a general guide to the property and, accordingly, if there is any point, which is of particular importance to you, please contact the relevant office. The Agents have not tested any apparatus, equipment, fittings or services and so cannot verify they are in working order. The buyer is advised to obtain verification. Please note all the measurement details are approximate and should not be relied upon as exact. All plans, floor plans and maps are for guidance purposes only and are not to scale. Under no circumstances should they be relied upon as exact or for use in planning carpets and other such fixtures, fittings or furnishings. YOUR HOME IS AT RISK IF YOU DO NOT KEEP UP REPAYMENTS ON A MORTGAGE OR OTHER LOAN SECURED ON IT. 'A Life Assurance policy may be requested.' 'Written Quotations of credit terms available on request.'

Banner Cross  
T: 0114 268 3241  
E: [bannercross@saxtonmee.co.uk](mailto:bannercross@saxtonmee.co.uk)  
[www.saxtonmee.co.uk](http://www.saxtonmee.co.uk)

Hathersage  
T: 01433 650009  
E: [hathersage@saxtonmee.co.uk](mailto:hathersage@saxtonmee.co.uk)

Bakewell  
T: 01629 815307  
E: [bakewell@saxtonmee.co.uk](mailto:bakewell@saxtonmee.co.uk)

Matlock  
T: 01629 828250  
E: [matlock@saxtonmee.co.uk](mailto:matlock@saxtonmee.co.uk)