



## Apt 49 The View City Lofts, Sheffield S1 2LB £900 Per Calendar Month

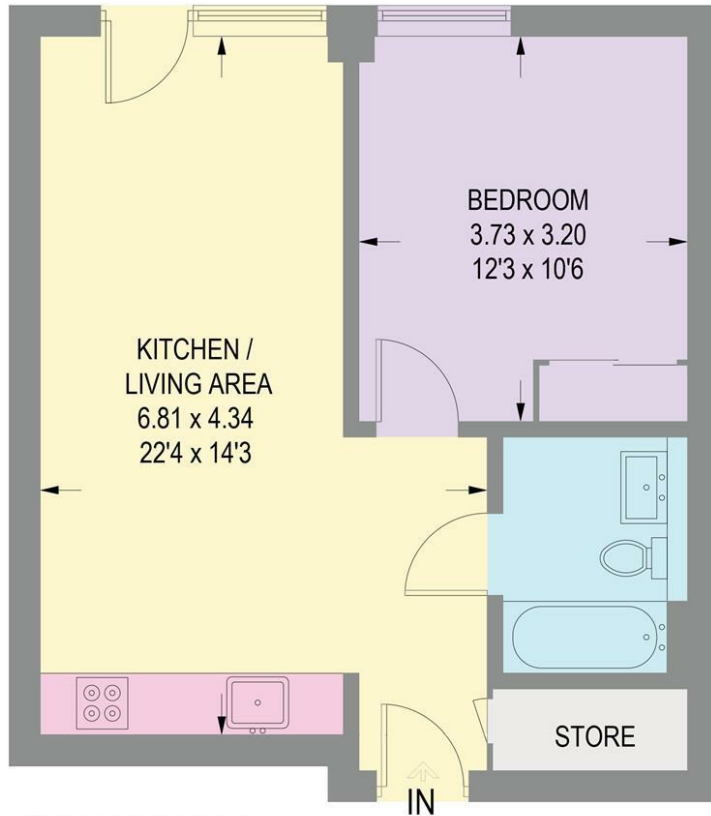
To let is this excellent, spacious one bedroom 8th floor apartment forming part of this iconic Sheffield building. Set in the heart of the City Centre, ideal for the working executive/couple is this beautifully presented double bedroom apartment.

Internally comprising; entrance hallway with utility room housing washer dryer, open plan kitchen/living/diner with integrated appliances and Juliet balcony, master double bedroom, luxury bathroom with 3 piece suite and shower over bath.

Restrictions: No smokers, pets or children. PART FURNISHED 6 MONTH TENANCY INITIALLY. Energy Efficiency Rating D. Council Tax Band B

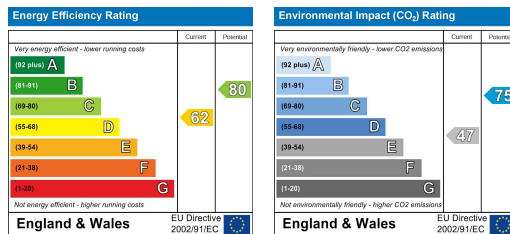
## 49 THE VIEW, CITY LOFTS

APPROXIMATE GROSS INTERNAL AREA = 44.2 SQ M / 476 SQ FT



### EIGHTH FLOOR

Illustration for identification purposes only, measurements are approximate, not to scale.



Banner Cross  
Hathersage  
Bakewell  
Matlock  
www.saxtonmee.co.uk

949-951 Ecclesall Road, Sheffield S11 8TN  
3 Bank View, Main Road, Hathersage S32 1BB  
Matlock Street, Bakewell DE45 1EE  
27 Causeway Lane, Matlock, DE4 3AR

T: 0114 268 3241  
T: 01433 650009  
T: 01629 815307  
T: 01629 828250

E: bannercross@saxtonmee.co.uk  
E: hathersage@saxtonmee.co.uk  
E: bakewell@saxtonmee.co.uk  
E: matlock@saxtonmee.co.uk