



Lime Tree Cottage Stumperlowe Hall Road, Sheffield S10 3QS



Lettings

Lime Tree

Per Calendar Month

£895 Per Calendar

Delightfully situated in this highly sought after area is this unique one bedroomed character cottage dating back to the mid 1800s.

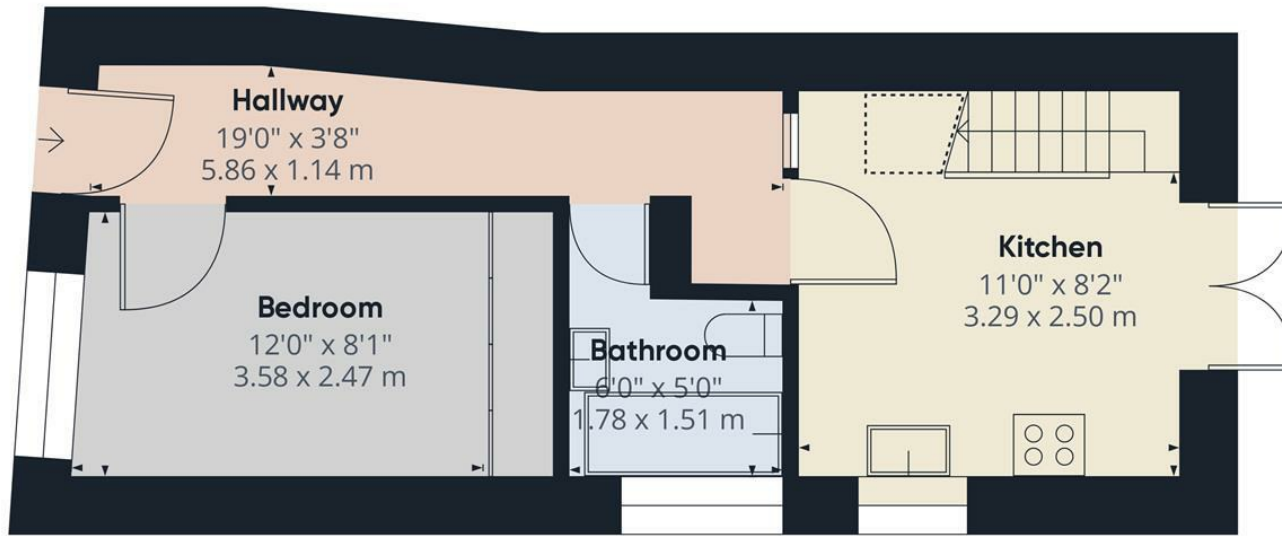
Fulwood is one of Sheffield's most sought after residential suburbs, served by good amenities in Fulwood Village, Ranmoor and Nether Green, close to reputable schooling, first class recreational facilities, public transport and private hospitals. Within easy access of the beautiful open countryside of the Peak National Park and a short drive from Sheffield City Centre.

The property briefly comprises of: entrance hallway, fitted breakfast kitchen with cooker, dishwasher, fridge, and French doors to the rear patio, double bedroom with fitted wardrobes, and bathroom with full suite and shower over the bath. First floor; large sitting room and dining area with exposed beams with balcony enjoying views towards open countryside. Outside: rear stone flagged patio garden.

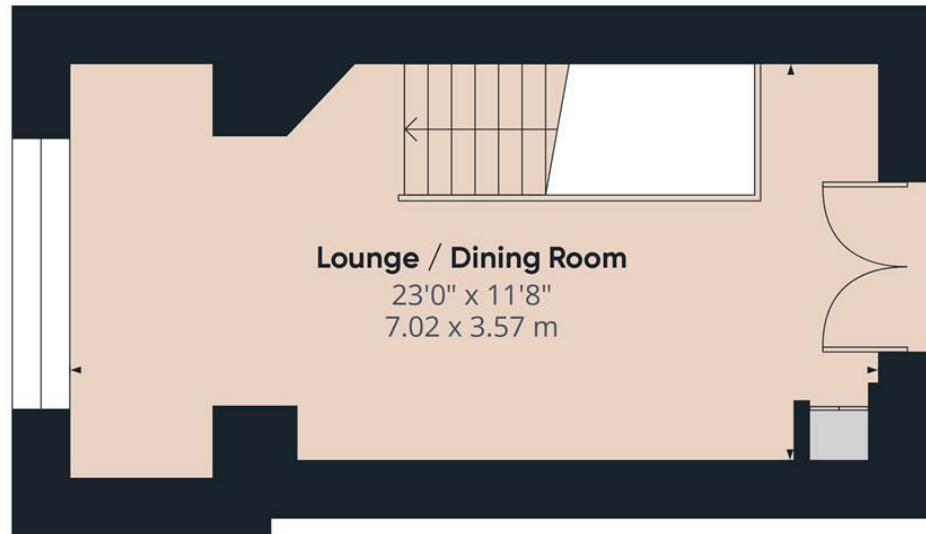
UNFURNISHED 12 MONTH TENANCY. Restrictions: No smokers. Energy Efficiency Rating D Council Tax Band C







Ground Floor



Floor 1

Approximate total area⁽¹⁾

580.82 ft²
53.96 m²

Reduced headroom

15.61 ft²
1.45 m²

(1) Excluding balconies and terraces

☐ Reduced headroom
(below 1.5m/4.92ft)

While every attempt has been made to ensure accuracy, all measurements are approximate, not to scale. This floor plan is for illustrative purposes only.

GIRAFFE360

While we endeavour to make our sales particulars fair, accurate and reliable, they are only a general guide to the property and, accordingly, if there is any point, which is of particular importance to you, please contact the relevant office. The Agents have not tested any apparatus, equipment, fittings or services and so cannot verify they are in working order. The buyer is advised to obtain verification. Please note all the measurement details are approximate and should not be relied upon as exact. All plans, floor plans and maps are for guidance purposes only and are not to scale. Under no circumstances should they be relied upon as exact or for use in planning carpets and other such fixtures, fittings or furnishings. YOUR HOME IS AT RISK IF YOU DO NOT KEEP UP REPAYMENTS ON A MORTGAGE OR OTHER LOAN SECURED ON IT. 'A Life Assurance policy may be requested.' 'Written Quotations of credit terms available on request.'

Banner Cross
T: 0114 268 3241
E: bannercross@saxtonmee.co.uk
www.saxtonmee.co.uk

Hathersage
T: 01433 650009
E: hathersage@saxtonmee.co.uk

Bakewell
T: 01629 815307
E: bakewell@saxtonmee.co.uk

Matlock
T: 01629 828250
E: matlock@saxtonmee.co.uk



Lettings