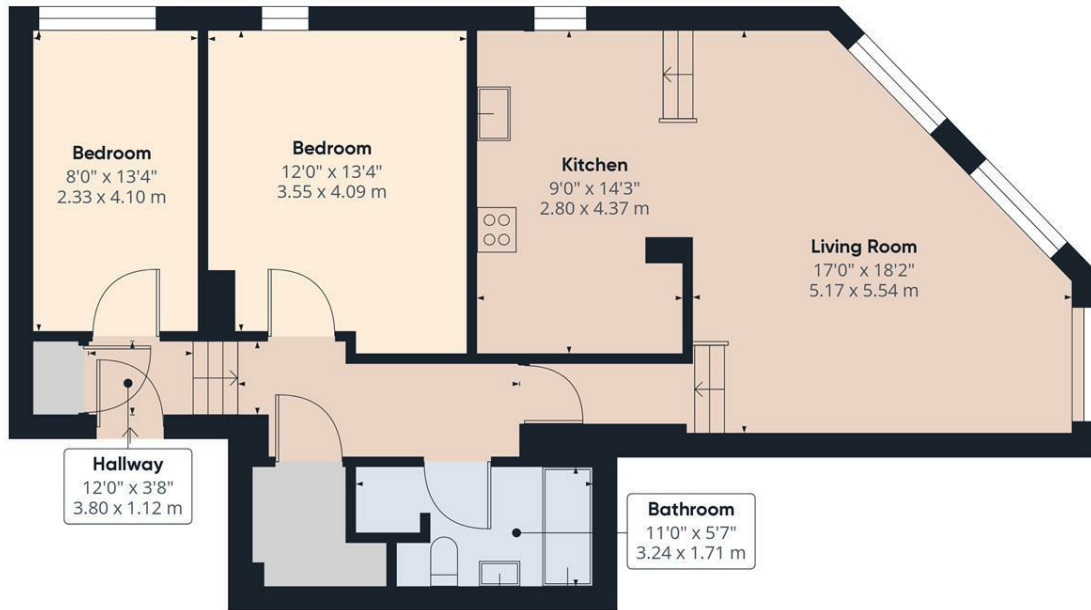




## **Apt 213 Kingswood Hall, Sheffield S6 1RN** **£925 Per Calendar Month**

Available to let is this well appointed and positioned, 2 bedroom luxury second floor apartment. Situated just a stones throw from the Middlewood Shops and within walking distance of the Supertram, the property comes ideal for the single professional/couple or even 2 professional sharers. Internally the property comprises; large hallway with 2 store rooms, open plan kitchen/living/diner with dishwasher, washing machine and fridge freezer, double bedroom 1, double bedroom 2, 3 piece bathroom suite with shower over bath. Outside; lovely communal gardens and gated parking for 1 vehicle. FURNISHED 6-12 MONTH TENANCY. Restrictions - No smokers or pets. Energy Efficiency Rating B. Council Tax Band C

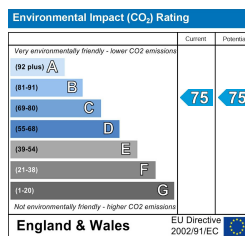
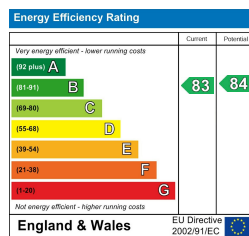


**Approximate total area<sup>1)</sup>**  
861.76 ft<sup>2</sup>  
80.06 m<sup>2</sup>

(1) Excluding balconies and terraces

While every attempt has been made to ensure accuracy, all measurements are approximate, not to scale. This floor plan is for illustrative purposes only.

GIRAFFE360



Banner Cross  
Hathersage  
Bakewell  
Matlock  
www.saxtonmee.co.uk

949-951 Ecclesall Road, Sheffield S11 8TN  
3 Bank View, Main Road, Hathersage S32 1BB  
Matlock Street, Bakewell DE45 1EE  
27 Causeway Lane, Matlock, DE4 3AR

T: 0114 268 3241  
T: 01433 650009  
T: 01629 815307  
T: 01629 828250

E: bannercross@saxtonmee.co.uk  
E: hathersage@saxtonmee.co.uk  
E: bakewell@saxtonmee.co.uk  
E: matlock@saxtonmee.co.uk