



The Chrome House 66 Malinda Street, Greaves Court, Sheffield S3 7EJ

Saxton Mee

Lettings

The Chrome House 66

Greaves Court

Per Calendar Month

£1,725 Per Calendar

A rare opportunity has arisen to let this superb three bedroom property located within a quiet and private development, moments from local amenities, tram routes and a short distance from the city centre. This property is immaculately presented with neutral decor throughout and gas central heating.

We would ideally like a group of 3 and would consider individuals.

The accommodation briefly comprises of; entrance hallway, open plan kitchen/dining/lounge. Staircase to first floor; two spacious double bedroom and bathroom with three piece white suite and shower over. Second Floor; spacious attic bedroom.

FURNISHED. 12 MONTH TENANCY. Restrictions: No smokers, no pets. Energy Efficiency Rating - awaiting information. Council Tax band C

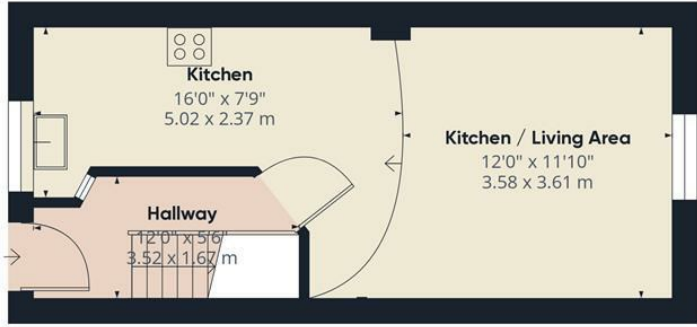
£575.00ppm to include utilities*

*Utilities to include Water, Gas, Electric, Council Tax and Internet (Lightning fast 1-gigabit broadband).

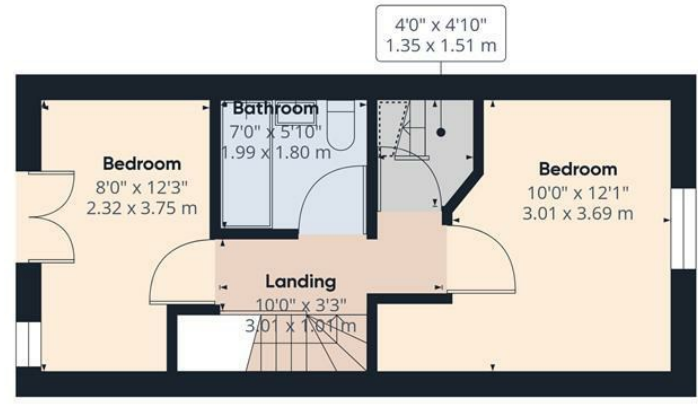
**Subject to a maximum usage of £25ppw







Ground Floor



Floor 1



Floor 2

Approximate total area⁽¹⁾
 928.49 ft²
 86.26 m²

Reduced headroom
 137.35 ft²
 12.76 m²

(1) Excluding balconies and terraces

Reduced headroom (below 1.5m/4.92ft)

While every attempt has been made to ensure accuracy, all measurements are approximate, not to scale. This floor plan is for illustrative purposes only.

GIRAFFE360

While we endeavour to make our sales particulars fair, accurate and reliable, they are only a general guide to the property and, accordingly, if there is any point, which is of particular importance to you, please contact the relevant office. The Agents have not tested any apparatus, equipment, fittings or services and so cannot verify they are in working order. The buyer is advised to obtain verification. Please note all the measurement details are approximate and should not be relied upon as exact. All plans, floor plans and maps are for guidance purposes only and are not to scale. Under no circumstances should they be relied upon as exact or for use in planning carpets and other such fixtures, fittings or furnishings. YOUR HOME IS AT RISK IF YOU DO NOT KEEP UP REPAYMENTS ON A MORTGAGE OR OTHER LOAN SECURED ON IT. 'A Life Assurance policy may be requested.' 'Written Quotations of credit terms available on request.'

Banner Cross
T: 0114 268 3241
E: bannercross@saxtonmee.co.uk
www.saxtonmee.co.uk

Hathersage
T: 01433 650009
E: hathersage@saxtonmee.co.uk

Bakewell
T: 01629 815307
E: bakewell@saxtonmee.co.uk

Matlock
T: 01629 828250
E: matlock@saxtonmee.co.uk



Lettings