



Goose Green Cottage Nether End, Baslow, Bakewell DE45 1SR

Saxton Mee

Lettings

# Goose Green Cottage Nether Baslow

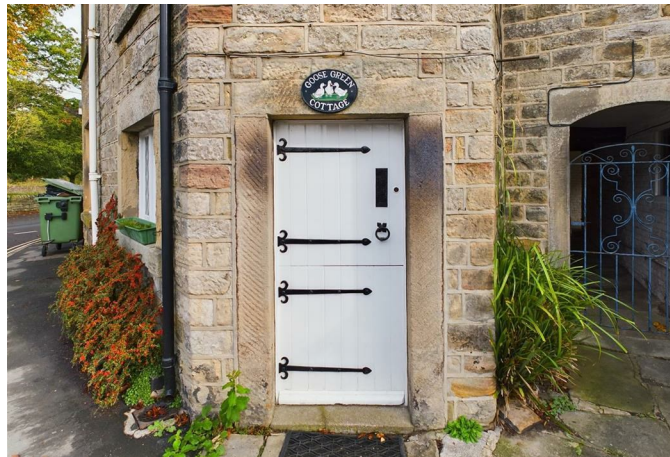
Per Calendar Month

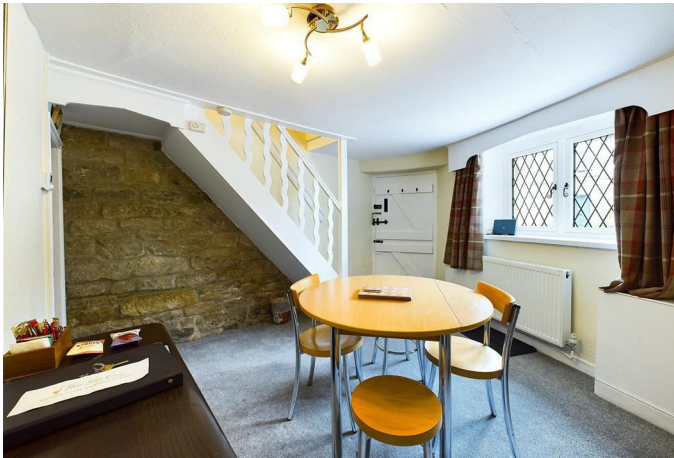
## £850 Per Calendar

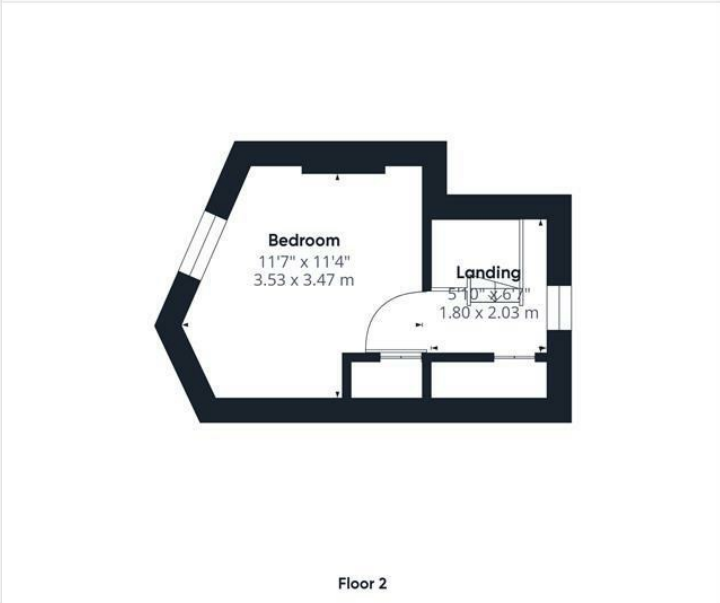
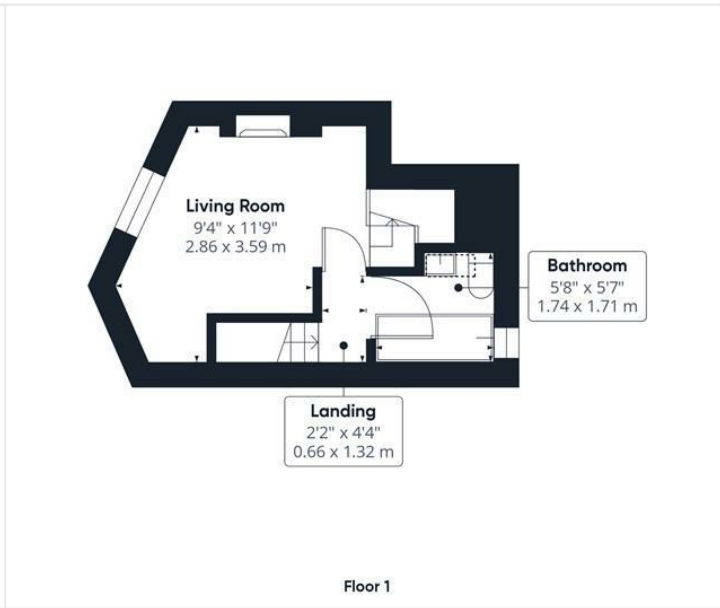
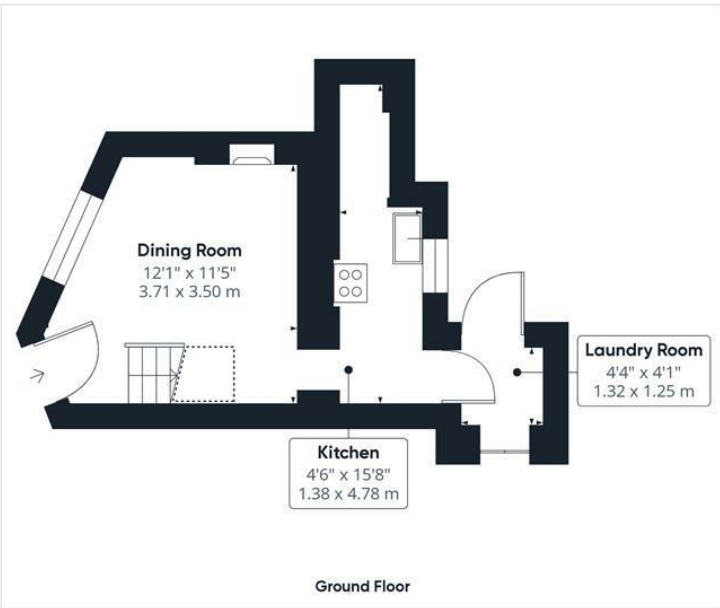
Available to let is this charming one-bedroom cottage located in the picturesque setting of Baslow, Bakewell. This property exudes quintessential British charm and offers a cosy retreat for those seeking a peaceful abode. The cottage boasts a traditional feel, perfect for those who appreciate character and history in their home.

The property briefly comprises of, dining room through to kitchen and pantry. Staircase to first floor; cosy lounge and bathroom with three piece white suite and shower over. Staircase to attic master bedroom.

FURNISHED 12 MONTH TENANCY. Restrictions: No smokers. Energy Efficiency Rating - Awaiting Information. Council Tax Band - Awaiting Information







**Approximate total area**  
526.92 ft<sup>2</sup>  
48.95 m<sup>2</sup>

**Reduced headroom**  
12.78 ft<sup>2</sup>  
1.19 m<sup>2</sup>

(1) Excluding balconies and terraces

Reduced headroom  
(below 1.5m/4.92ft)

While every attempt has been made to ensure accuracy, all measurements are approximate, not to scale. This floor plan is for illustrative purposes only.

GIRAFFE360

While we endeavour to make our sales particulars fair, accurate and reliable, they are only a general guide to the property and, accordingly, if there is any point, which is of particular importance to you, please contact the relevant office. The Agents have not tested any apparatus, equipment, fittings or services and so cannot verify they are in working order. The buyer is advised to obtain verification. Please note all the measurement details are approximate and should not be relied upon as exact. All plans, floor plans and maps are for guidance purposes only and are not to scale. Under no circumstances should they be relied upon as exact or for use in planning carpets and other such fixtures, fittings or furnishings. YOUR HOME IS AT RISK IF YOU DO NOT KEEP UP REPAYMENTS ON A MORTGAGE OR OTHER LOAN SECURED ON IT. 'A Life Assurance policy may be requested.' 'Written Quotations of credit terms available on request.'

Banner Cross  
T: 0114 268 3241  
E: [bannercross@saxtonmee.co.uk](mailto:bannercross@saxtonmee.co.uk)  
[www.saxtonmee.co.uk](http://www.saxtonmee.co.uk)

Hathersage  
T: 01433 650009  
E: [hathersage@saxtonmee.co.uk](mailto:hathersage@saxtonmee.co.uk)

Bakewell  
T: 01629 815307  
E: [bakewell@saxtonmee.co.uk](mailto:bakewell@saxtonmee.co.uk)

Matlock  
T: 01629 828250  
E: [matlock@saxtonmee.co.uk](mailto:matlock@saxtonmee.co.uk)



Lettings